

# 54" ROTARY MOWER MODEL 18071-01

SEE FIGURE 2, PAGE 4  
FOR BREAKDOWN

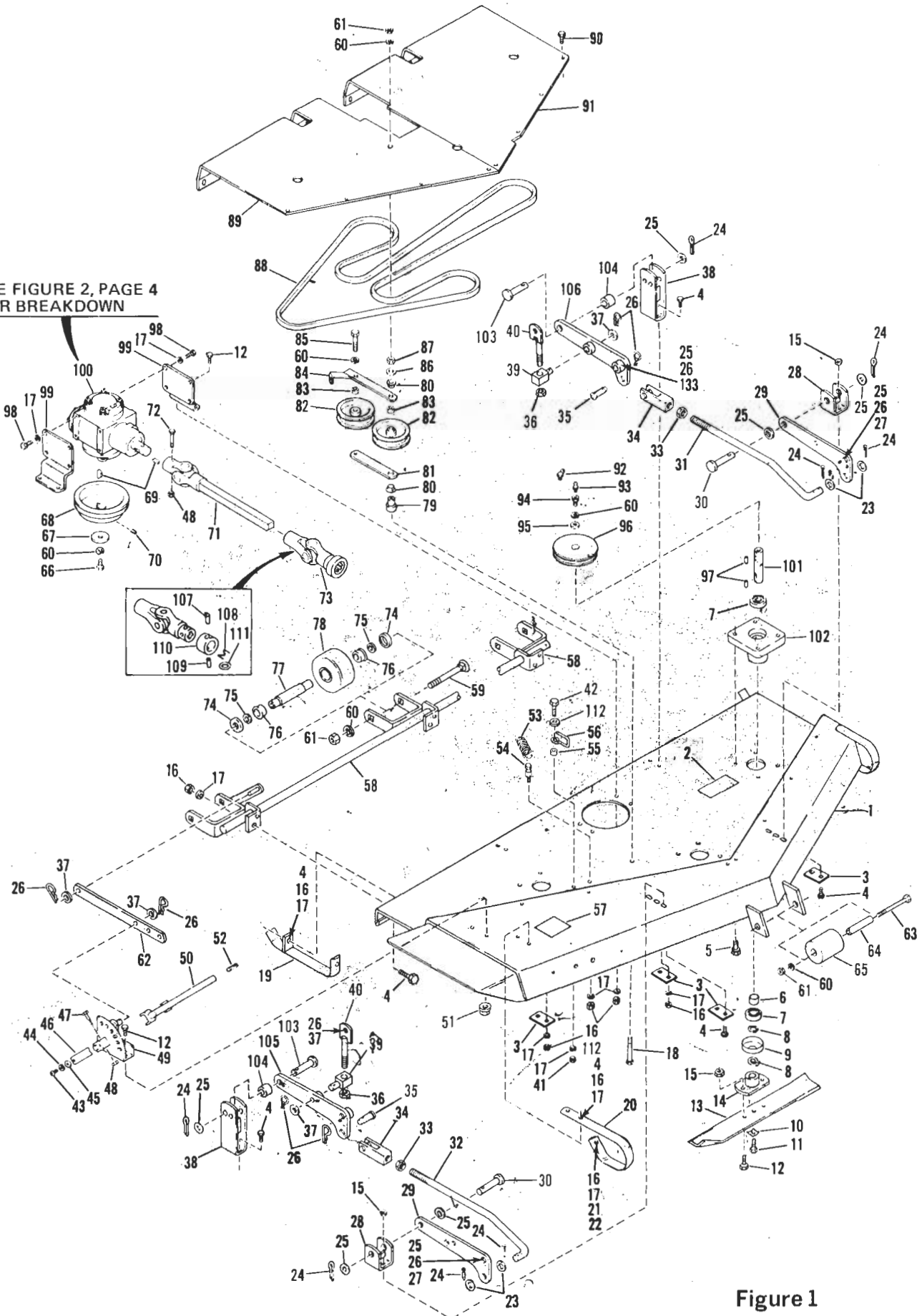


Figure 1

## 54" ROTARY MOWER MODEL 18071-01

REF. NO.	PART NO.	DESCRIPTION	NO. REQ'D.	REF. NO.	PART NO.	DESCRIPTION	NO. REQ'D.
1	1726724	Base Assembly	1	56	1724828	Belt Guide	1
2	1724840	Decal, Belt Drive	1	57	1725503	Decal (Cutting Hgt. Adj.)	1
3	1720372	Support Plate	4	58	1722894	Wheel Yoke Assembly	1
4	1100078	Capscrew, 5/16-18 x 7/8	18	59	1186143	Carriage Bolt, 3/8-16 x 4-1/2	3
5	1185670	Capscrew, 5/16-18 x 7/8 with Lockwasher	12	60	1100243	Lockwasher, 3/8	12
6	1720999	Spacer	3	61	1186231	Hex Nut, 3/8-16	7
7	1185828	Ball Bearing	6	62	1722888	Lift Link	1
8	1185708	Retaining Ring	6	63	1103230	Capscrew, 3/8-16 x 6	1
9	1716744	Cap	3	64	1720578	Spacer	1
10	1185715	Lockwasher, 3/8 (Pyramidal Type)	3	65	1720577	Roller	1
11	1100009	Capscrew, 3/8-24 x 1	3	66	1111708	Capscrew, 3/8-24 x 5/8	1
12	1100044	Capscrew, 5/16 18 x 3/4	12	67	1703052	Flat Washer	1
13	1722883	Cutter Blade	3	68	1718659	Sheave	1
14	1722882	Hub Assembly	3	69	1100276	Woodruff Key, 1/4 x 7/8	2
15	1110107	Lock Nut, 5/16-18	10	70	1103466	Set Screw, 5/16-18 x 3/8	2
16	1186230	Hex Nut, 5/16-18	21	*71	1722632	Drive Assembly	1
17	1100242	Lockwasher, 5/16	29	72	1111601	Capscrew, 1/4-20 x 1-3/4	1
18	1111614	Capscrew, 3/8-16 x 3	1	*73	1723790	Universal Joint Assembly (Incl. Ref. Nos. 107 thru 111)	1
19	1726688	Right Hand Runner Assembly	1	74	1894386	Cupped Washer	6
20	1722896	Right Hand Runner	1	75	1705108	Flat Washer	6
21	1100043	Capscrew, 5/16-18 x 1	1	76	1185695	Ball Bearing	6
22	1803327	Flat Washer, 5/16	1	77	1747737	Bearing Axle	3
23	1107387	Flat Washer, 3/8	4	78	1717649	Roller	3
24	1100351	Cotter Pin, 1/8 x 1-1/4	8	79	1722884	Idler Spacer	1
25	1107386	Flat Washer, 5/8	10	80	1714299	Nylon Bushing	2
26	1723478	Spring Cotter	12	81	1718649	Idler Arm	1
27	1719367	Clevis Pin	2	82	1724488	Idler Pulley	2
28	1722947	Lift Bracket Assembly, Front	2	83	1718651	Spacer	2
29	1722726	Right Hand Link	2	84	1718642	Idler Arm Assembly	1
30	1708040	Clevis Pin	2	85	1100012	Capscrew, 3/8-24 x 1-3/4	1
31	1722805	Left Hand Rod	1	86	1100265	Flat Washer	1
32	1722806	Right Hand Rod	1	87	1186259	Jam Nut, 3/8-16	1
33	1186235	Hex Nut, 5/8-11	2	88	1726723	V-Belt	1
34	1714573	Rod End	2	89	1722903	Right Hand Belt Cover	1
35	1719324	Clevis Pin	2	90	1185712	Self Thread Screw, No. 10-20 x 1/2	17
36	1110110	Lock Nut, 1/2-13	2	91	1722902	Left Hand Belt Cover	1
37	1107385	Flat Washer, 1/2	6	92	1110086	Grease Fitting, 45°	1
38	1722720	Rear Lift Bracket Assembly	2	93	1104954	Grease Fitting	1
39	1724316	Stud	2	94	1719331	Bolt	3
40	1715404	Link Assembly	2	95	1701055	Flat Washer	3
41	1186391	Nut, Whiz Lock	1	96	1724940	Pulley	3
42	1100808	Capscrew, 5/16-18 x 1-1/4	1	97	1108852	Square Key, 3/16 x 3/4	6
43	1114748	Machine Screw, No. 10-32 x 1/2	1	98	1103195	Capscrew, 5/16-18 x 5/8	8
44	1100240	Lockwasher, No. 10	1	99	1722901	Support Bracket	2
45	1103959	Flat Washer, No. 10	1	100	1718650	Gear Box Assy. (See Figure 2)	1
46	1725403	Spring	1	101	1722887	Drive Shaft	3
47	1100811	Capscrew, 1/4-20 x 1-1/2	1	102	1722865	Bearing Housing	3
48	1110106	Lock Nut, 1/4-20	2	103	1718772	Clevis Pin	4
49	1718667	Quadrant Assembly	1	104	1718555	Tubular Spacer	2
50	1718664	Handle Assembly	1	105	1724317	Right Hand Link	1
51	1186391	Whiz-lock Nut, 5/16	2	106	1724318	Left Hand Link	1
52	1891696	Roll Pin, 5/16 x 1-1/2	1	107	1118922	Drive Pin, 3/16 x 1/2	1
53	1706822	Extension Spring	1	108	1723782	Return Spring	1
54	1715210	Spring Anchor Bolt	1	109	1187762	Groove Pin, 3/16 x 3/8	1
55	1714665	Spacer	1	110	1723781	Locking Collar	1
				111	1725334	Thrust Washer	1
				112	1107382	Flat Washer, 5/16	3

\* 1714208 Repair Kit for Joint Marked NEAPCO

\* 1714207 Repair Kit for Joint Marked 6N

# 54" ROTARY MOWER MOWER 18071-01

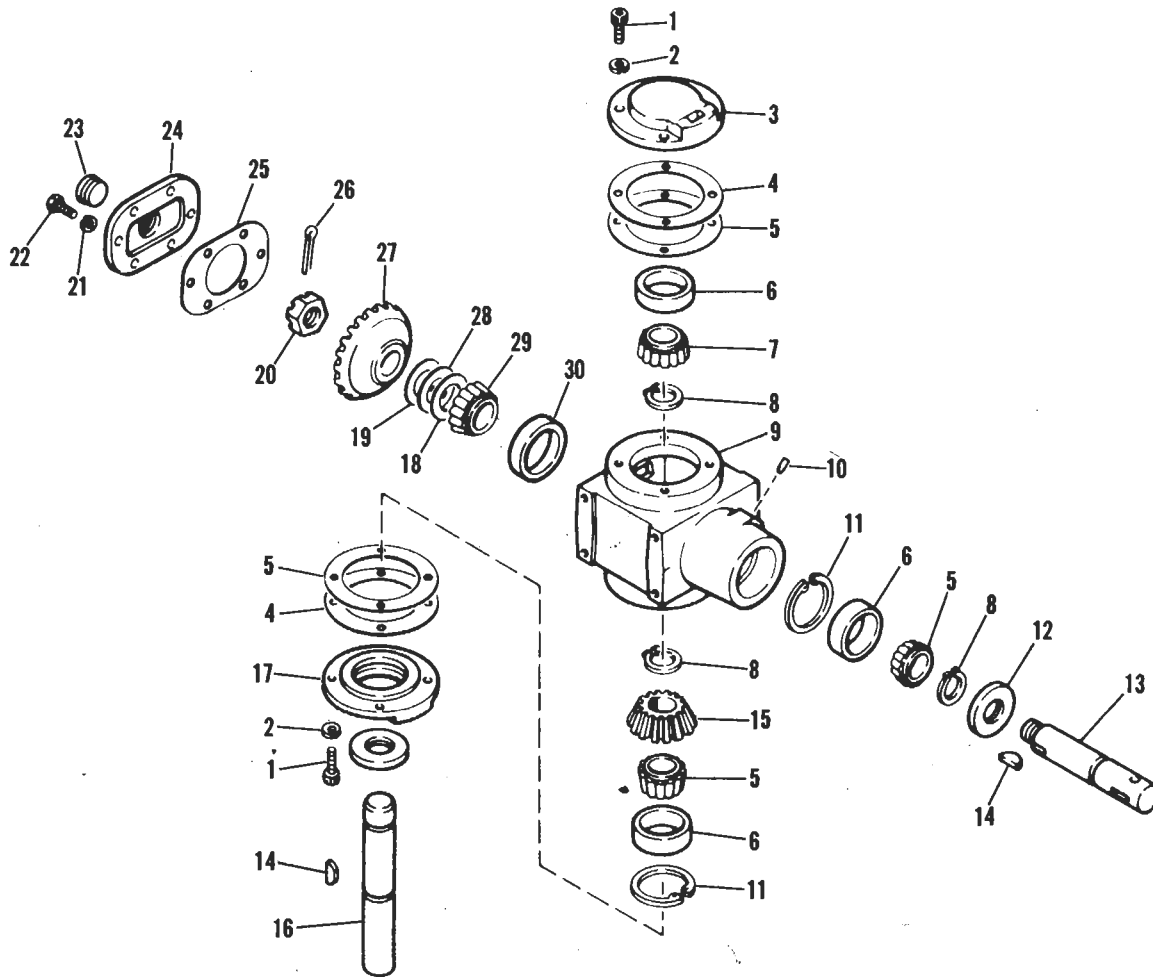


Figure 2

REF. NO.	PART NO.	DESCRIPTION	NO. REQ'D.	REF. NO.	PART NO.	DESCRIPTION	NO. REQ'D.
1	1185686	Capscrew, 5/16-18 x 3/4 . . . . .	8	16	1718621	Shaft, Output . . . . .	1
2	1100242	Lockwasher, 5/16 . . . . .	8	17	1717454	Bearing Retainer . . . . .	1
3	1718620	Bearing Retainer . . . . .	1	18	1800750	Shim, 1-1/2 x .003 . . . . .	1
4	1719501	Gasket . . . . .	2	19	1800338	Shim, .015 . . . . .	1
5	1717456	Gasket . . . . .	10	20	1185662	Slotted Nut, 7/8-14 UNF . . . . .	1
6	1185660	Bearing Cup . . . . .	3	21	1100241	Lockwasher, 1/4 . . . . .	6
7	1185661	Bearing Cone . . . . .	3	22	1185684	Capscrew, 1/4-20 x 5/8 . . . . .	6
8	1185689	Retaining Ring . . . . .	3	23	1185685	Plug, 3/4-14 NPT . . . . .	1
9	1719710	Gear Case (Incl. Nos. 18, 19, 28, 29 & 30) . . . . .	1	24	1717448	Cover . . . . .	1
10	182682	Breather . . . . .	1	25	1717449	Gasket Cover . . . . .	1
11	1118735	Retaining Ring . . . . .	2	26	1100352	Cotter Pin, 1/8 x 1-1/2 . . . . .	1
12	1185687	Oil Seal . . . . .	2	27	1717459	Gear, 29 T . . . . .	1
13	1718622	Input Shaft . . . . .	1	28	1800751	Shim, 1-1/2 x .005 . . . . .	1
14	1709611	Woodruff Key, 1/4 x 7/8 . . . . .	2	29	1185688	Bearing Cone . . . . .	1
15	1717457	Bevel Pinion, 18 T . . . . .	1	30	1185118	Bearing Cup . . . . .	1