

---

# **Bolens<sup>®</sup>**

**Mower Attachment  
48 Inch**

**Model 18049**

Serial Number  
0400101  
thru  
0799999

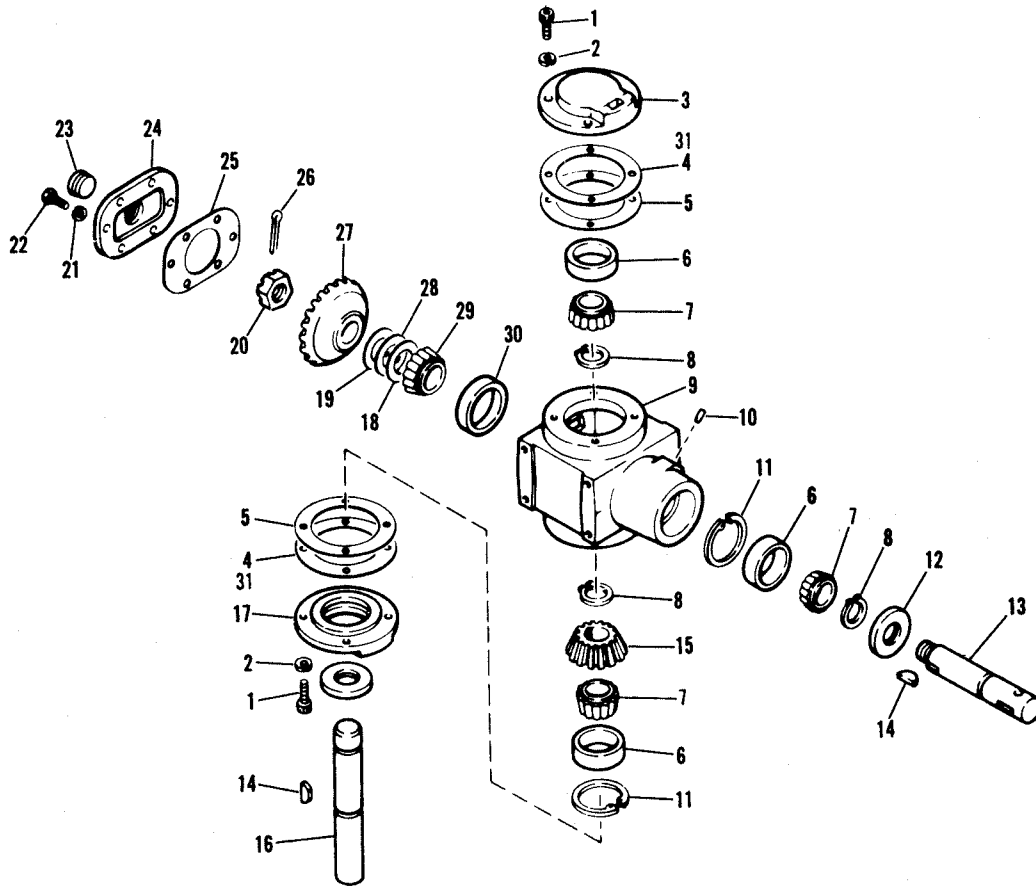
**Parts List**



REF. NO.	PART NO.	DESCRIPTION	NO. REQ'D.	REF. NO.	PART NO.	DESCRIPTION	NO. REQ'D.
1	1718772	Clevis Pin . . . . .	2	60	1718664	Handle Assembly (4) . . . . .	1
2	1715404	Link Assembly . . . . .	2		1731550	Handle Assembly (6)(7) . . . . .	1
3	1724316	Stud . . . . .	2	61	1891696	Roll Pin, 5/16 x 1-1/2 (4) . . . . .	1
4	1734514	Lock Nut, 1/2-13 . . . . .	5	62	1890234	Flat Washer, 1/2 . . . . .	5
5	1719324	Clevis Pin . . . . .	2	63	1724844	Quadrant Assembly (4) . . . . .	1
6	1724318	Left Hand Link . . . . .	1		1724843	Quadrant (6)(7) . . . . .	1
7	1718555	Tubular Spacer . . . . .	2	64	1186257	Lock Nut, 1/4-20 (4) . . . . .	1
8	1107386	Flat Washer, 5/8 . . . . .	10	65	1725403	Spring (4) . . . . .	1
9	1100808	Hex Screw, 5/16-18 x 1-1/4 . . . . .	4	66	1103959	Flat Washer, No. 10 (4) . . . . .	2
10	1723478	Spring Cotter . . . . .	12	67	1114748	Machine Screw, No. 10-32 x 1-1/2 (4)	1
11	1107385	Flat Washer, 1/2 . . . . .	7	68	1100240	Lockwasher, No. 10 (4) . . . . .	1
12	1719367	Pin . . . . .	2	69	1100811	Capscrew, 1/4-20 x 1-1/2 (4) . . . . .	1
13	1100351	Cotter Pin, 1/8 x 1-1/4 . . . . .	6	70	1722974	Link . . . . .	1
14	1714573	Rod End . . . . .	2	71	1100045	Capscrew, 5/16-18 x 1 . . . . .	9
15	1108891	Hex Nut, 5/8-11 . . . . .	2	72	1100066	Capscrew, 1/2-13 x 3-1/2 . . . . .	2
16	1722805	Left Hand Rod . . . . .	1	73	1719397	Bushing . . . . .	2
17	1708040	Clevis Pin . . . . .	2	74	1719381	Wheel and Tire Assembly . . . . .	2
18	1722726	Right Hand Link . . . . .	2	75	1100245	Lockwasher, 1/2 . . . . .	4
19	1722947	Lift Bracket Assembly, Front . . . . .	2	76	1722632	Drive Shaft (6)(7) . . . . .	1
20	1186098	Capscrew, 5/16-18 x 3/4 . . . . .	2	77	1724803	Shaft Assembly . . . . .	1
21	1732499	Lock Nut, 5/16-18 . . . . .	19	78	1724828	Belt Guide . . . . .	1
22	1100242	Lockwasher, 5/16 . . . . .	33	79	1715210	Bolt, Spring Anchor (4)(6) . . . . .	1
23	1107387	Flat Washer, 3/8 . . . . .	4		1100779	Hex Screw, 5/16-18 x 1-3/4 (7) . . . . .	1
24	1724492	Flange Screw, 1/4-20 x 1/2 . . . . .	12	80	1724822	Extension Spring . . . . .	1
25	1727725	Belt Cover, Left Hand . . . . .	1	81	1724924	Wear Button . . . . .	1
26	1727726	Belt Cover, Right Hand . . . . .	1	82	1724929	Washer, Thrust . . . . .	2
27	1724943	V-Belt . . . . .	1	83	1100080	Capscrew, 1/2-20 x 2-3/4 . . . . .	1
28	1185976	Grease Fitting . . . . .	2	84	1724931	Sleeve, Bearing . . . . .	1
29	1731504	Grease Fitting, 90° (Center shaft only) . . . . .	1	85	1724925	Idler Pulley . . . . .	2
30	1185093	Nut, 3/4-16 . . . . .	3	86	1724930	Sleeve, Bearing (4) . . . . .	1
31	1724940	Sheave, Blade (4) . . . . .	3		1724931	Sleeve, Bearing (6)(7) . . . . .	1
	1727555	Sheave, Blade (6)(7) . . . . .	3	87	1724928	Capscrew, 1/2-20 x 1-5/8 . . . . .	1
32	1724491	Flange Screw, 5/16-18 x 3/4 . . . . .	12	88	1724926	Idler Arm . . . . .	1
33	1719467	Cap, Protector (4)(6) . . . . .	1	89	1724927	Spacer (4) . . . . .	1
34	1719461	Flange, Wash Out (4)(6) . . . . .	1		1724927	Spacer (6)(7) . . . . .	2
35	1100352	Cotter Pin, 1/8 x 1-1/2 (4)(6) . . . . .	1	90	1724923	Idler Arm . . . . .	1
36	1727729	Mower Base Assembly (4) . . . . .	1	91	1722806	Right Hand Rod . . . . .	1
	1730218	Mower Base Assembly (6) . . . . .	1	92	1724317	Right Hand Link . . . . .	1
	1736777	Mower Base Assembly (7) . . . . .	1	93	1111708	Capscrew, 3/8-24 x 5/8 . . . . .	1
37	1724840	Decal, Belt Drive (4) . . . . .	1	94	1703052	Flat Washer . . . . .	1
38	1719469	Washer, Wave (4)(6) . . . . .	1	95	1718659	Sheave . . . . .	1
39	1703073	Thrust Washer (4)(6) . . . . .	1	96	1103195	Capscrew, 5/16-18 x 5/8 . . . . .	8
40	1718684	Mower Guard . . . . .	1	97	1727727	Support Bracket . . . . .	1
41	1185828	Ball Bearing . . . . .	6	98	1719710	Gear Box Assembly . . . . .	1
42	1724029	Spindle Housing . . . . .	3	99	1718660	Bracket . . . . .	1
43	1724033	Spacer . . . . .	3	100	1111601	Capscrew, 1/4-20 x 1-3/4 . . . . .	1
44	1724942	Shaft Assembly . . . . .	3	101	1100276	Woodruff Key, 1/4 x 7/8 . . . . .	2
45	1726138	Blade . . . . .	3	102	1185919	Set Screw, 5/16-18 x 3/8 . . . . .	2
46	1724051	Plate . . . . .	3	103	1110106	Lock Nut, 1/4-20 . . . . .	1
47	1724034	Washer, Shakeproof, 3/8 (Pyramid) (4) . . . . .	6	104	1729348	Discharger Deflector (6)(7) . . . . .	1
	1100242	Lockwasher (6)(7) . . . . .	6	105	1728695	Torsion Spring (6) . . . . .	1
48	1100009	Capscrew, 3/8-24 x 1 . . . . .	6	106	1729347	Hinge Rod (6) . . . . .	1
49	1104436	Woodruff Key, 3/16 x 3/4 . . . . .	3	107	1729447	Klip Ring (6) . . . . .	2
50	1186411	Capscrew, 3/8-16 x 6 . . . . .	1	108	1100255	Flat Washer (6)(7) . . . . .	3
51	1720578	Spacer . . . . .	1	109	1709037	Decal . . . . .	1
52	1720577	Roller . . . . .	1	110	1109939	Acorn Nut, 5/16-18 . . . . .	9
53	1100243	Lockwasher, 3/8 . . . . .	2	111	1718772	Clevis Pin . . . . .	4
54	1186231	Nut, 3/8-16 . . . . .	4	112	1715387	Spacer (6)(7) . . . . .	1
55	1720372	Support Plate . . . . .	2	113	1716583	Spring (6)(7) . . . . .	1
56	1186098	Carriage Bolt, 5/16-18 x 3/4 . . . . .	9	114	1185496	Jam Lock Nut, 1/2-13 (6)(7) . . . . .	1
57	1107382	Flat Washer, 5/16 . . . . .	10	115	1185256	Roll Pin, 3/16 x 7/8 (6)(7) . . . . .	1
58	1731547	Special Screw (6)(7) . . . . .	1	116	1733103	Drive Pin, 5/16 x 3/4 (6)(7) . . . . .	1
59	1724841	Decal (4) . . . . .	1	117	1100068	Hex Screw, 3/8-16 x 3/4 (7) . . . . .	2
	1734521	Decal (6) . . . . .	1	118	1733398	Hex Nut, 3/8-16 (7) . . . . .	2
	1736773	Decal (7) . . . . .	1				

(4) Serial Number 0400101 thru 0499999  
 (6) Serial Number 0600101 thru 0699999  
 (7) Serial Number 0700101 thru 0799999

• Common Hardware - Purchase Locally  
 Grade 5 Where Applicable



REF. NO.	PART NO.	DESCRIPTION	NO. REQ'D.
1	• 1110818	Capscrew, 5/16-18 x 3/4	8
2	• 1100242	Lockwasher, 5/16	8
3	1718620	Bearing Retainer	1
4	1719501	Gasket	2
5	1717456	Gasket	10
6	1185660	Bearing Cup	3
7	1185661	Bearing Cone	3
8	1185689	Retaining Ring	3
9	1717446	Gear Case (Incl. Ref. Nos. 18, 19, 28, 29 & 30)	1
10	182682	Breather	1
11	1118735	Retaining Ring	2
12	1185687	Oil Seal	2
13	1718622	Input Shaft	1
14	1709611	Woodruff Key, 1/4 x 7/8	2
15	1717457	Bevel Pinion, 18T	1
16	1718621	Shaft, Output	1

REF. NO.	PART NO.	DESCRIPTION	NO. REQ'D.
17	1717454	Bearing Retainer	1
18	1800750	Shim, 1-1/2 x .003	1
19	1800338	Shim, .015	1
20	• 1185662	Slotted Nut, 7/8-14 UNF	1
21	• 1100241	Lockwasher, 1/4	6
22	• 1100805	Capscrew, 1/4-20 x UNC-3	6
23	• 1100937	Plug, 3/4-14 NPT.	1
24	1717448	Cover	1
25	1717449	Gasket Cover	1
26	• 1100352	Cotter Pin, 1/8 x 1-1/2	1
27	1717459	Gear, 29T	1
28	1800751	Shim, 1-1/2 x .005	1
29	1185688	Bearing Cone	1
30	1165118	Bearing Cup	1
31	1721346	Gasket .030	1
	1719710	Gear Case Assy. (Incl. Ref. Nos. 1 thru 31)	1

• Common Hardware - Purchase Locally  
Grade 5 Where Applicable

Figure 2 GEAR CASE ASSEMBLY