

BOLENS 19 HP TRACTOR

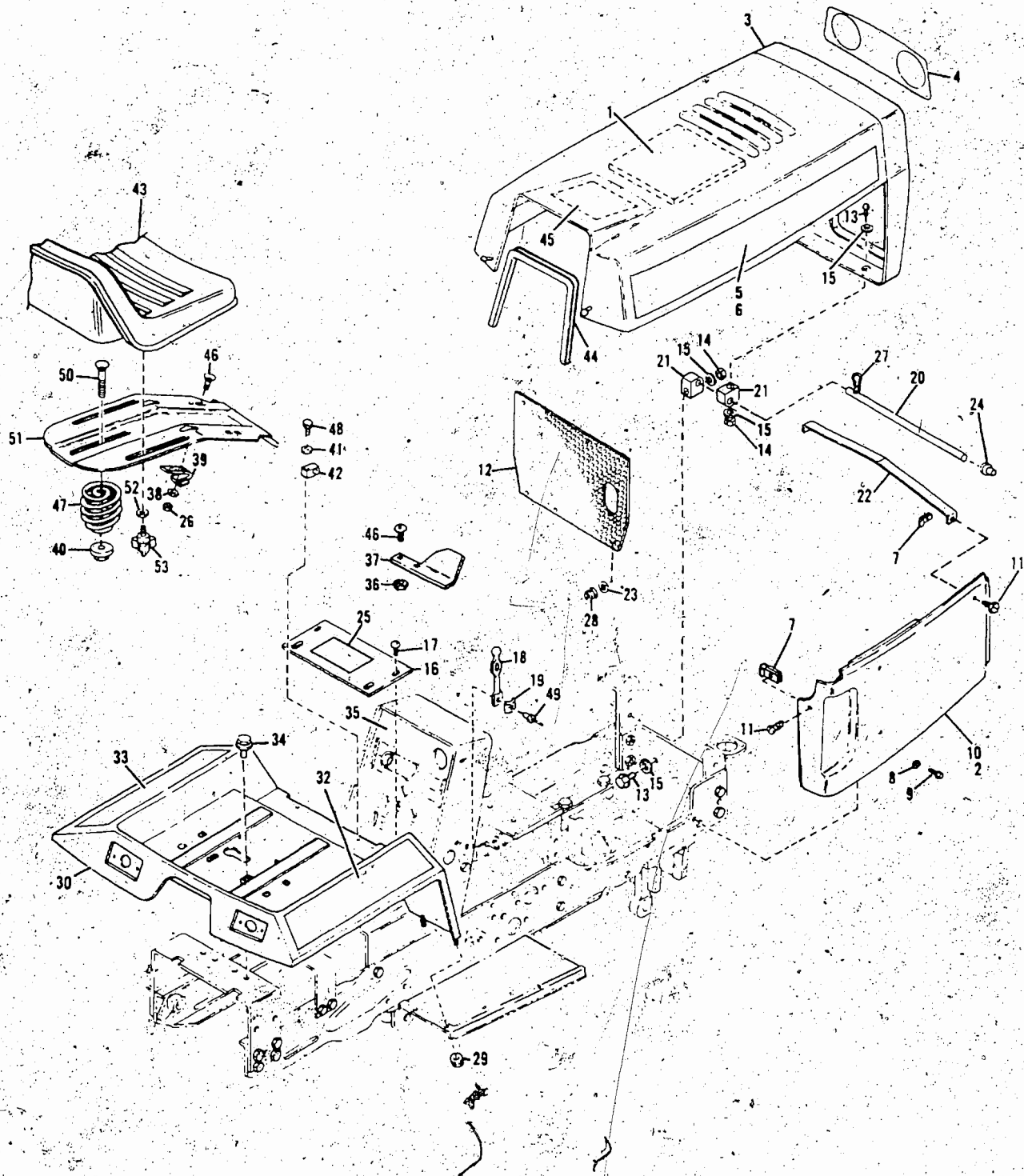


Figure 1. TRIM ASSEMBLY  
2

B-1

MODEL 1966 (1900)

REF. NO.	PART NO.	DESCRIPTION	NO. REQ'D.	REF. NO.	PART NO.	DESCRIPTION	NO. REQ'D.
1	1736588	Accoustical Foam	1	30	1734530	Rear Fender Assembly	1
2	1742142	L.H. Side Panel	1	31	1726212	Accoustical Foam	2
3	1736201	Grille and Hood Assembly	1	32	1746784	Decal, R.H. (Fender)	1
4	1746209	Decal	1	33	1746512	Decal, L.H. (Fender)	1
5	1746211	Decal, R.H. (Identification)	1	34	• 1186327	Flange-Lock Screw, 5/16-18 x 1/2	2
6	1746210	Decal, L.H. (Identification)	1	35	1745679	(Instrument Panel) Decal	1
7	1185456	Speed Nut 1/4-20	4	36	• 1186389	Flange Nut, 1/4-20	2
9	• 1724492	Slotted Hex Screw, 1/4-20 x 1/2	6	37	1736449	Guard	1
10	1742141	R.H. Side Panel	1	38	• 1100241	Lockwasher, 1/4	1
11	1110685	Hex Screw, 1/4-20 x 5/8	4	39	1734515	Actuator Bracket	1
12	1739112	Grille Screen	1	40	1735125	Nut and Washer	1
13	• 1100799	Capscrew, 5/16-18 x 1-1/2	4	41	• 1100242	Lockwasher, 5/16	2
14	• 1732499	Hex Nut, 5/16-18	4	42	1735265	Pivot Block	2
15	• 1186230	Flat Washer, 5/16	8	43	1746380	Seal	1
16	1727164	Cover	1	44	1726932	Hood Trim	1
17	1185712	Thread Cutting Screw, No. 10-24 x 1/2	2	45	1745681	(Service Instrument) Decal	1
18	1727127	Latch	2	46	• 1186067	Carriage Bolt, 1/4-20 x 1/2	3
19	1727126	Clip	2	47	1733960	Spring	1
20	1736341	Pivot Rod	1	48	• 1100799	Hex Head Capscrew, 5/16-18 x 1-1/2	2
21	1736340	Pivot Block	4	49	1728772	Pop Rivet, 3/16	2
22	1742093	Panel Support Bracket	1	50	• 1186130	Carriage Bolt, 3/8-16 x 1-1/4	1
23	1185418	Washer	4	51	1734115	Seat Support Assembly	1
24	1728072	Push Nut	1	52	• 1100256	Flat Washer, 3/8	2
25	1738909	Inst. Decal	1	53	1734269	Seat Knob	2
26	• 1186229	Hex Nut, 1/4-20	1	NI	1735222	Black Spray Paint	
27	• 1100362	Cotter Pin, 3/32 x 1/2	1	NI	1735223	White Spray Paint	
28	• 1186208	Flange Nut, No. 10-32	4	NI	1736796	Green Spray Paint	
29	• 1186391	Flange Nut, 5/16-18	4				

•Common Hardware - Purchase Locally (Grade 5 where applicable)

BOLENS 19 HP TRACTOR

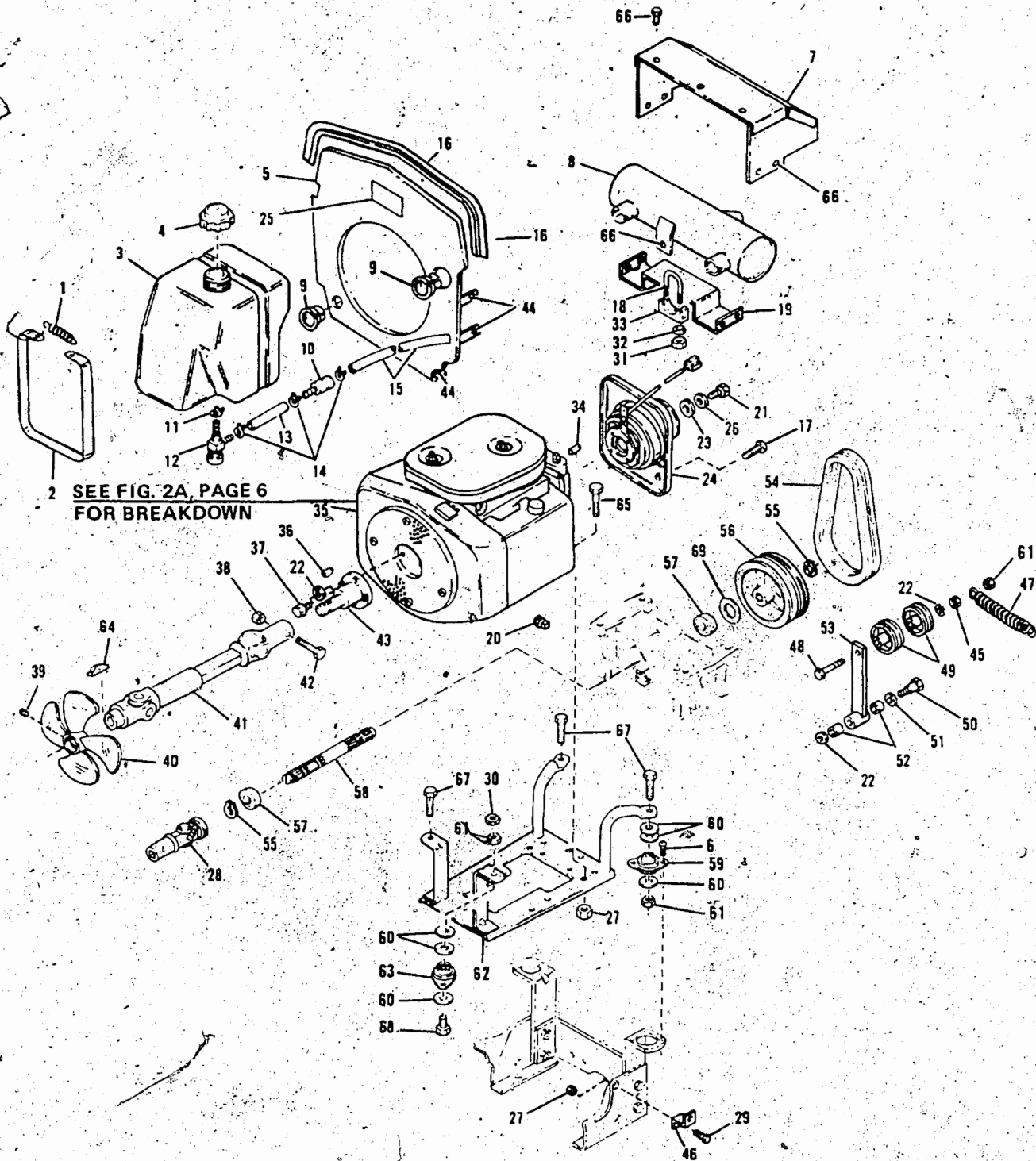


Figure 2 ENGINE AND DRIVE ASSEMBLY

REF. NO.	PART NO.	DESCRIPTION	NO. REQ'D.	REF. NO.	PART NO.	DESCRIPTION	NO. REQ'D.
1	1806648	Spring	1	36	1100276	Woodruff Key, 1/4 x 7/8	1
2	1727918	Strap	1	37	• 1100046	Cap Screw, 3/8-16 x 1	4
3	1735065	Fuel Tank (Incl. Ref. No. 4)	1	38	• 1186229	Locknut, 1/4-20	1
4	1725868	Fuel Tank Cap	1	39	1737419	Set Screw, 5/16-18 x 3/4	2
5	1746245	Shield Assembly - Heat	1	40	1736587	Fan	1
6	1185712	No. 8 Self-Tapping Screw	8	41	1746256	Drive Shaft	1
7	1736280	Shield Assembly - Heat	1	42	• 1100807	Capscrew, 1/4-20 x 2	1
8	1736467	Muffler	1	43	1736100	Drive Shaft	1
9	1729587	Snap Bushing	2	44	1724492	Thread Cutting Screw, No. 1/4-20 x 1/2	6
10	1727491	Fuel Line Filter	1	45	• 1186259	Hex Jam Nut, 3/8-16	1
11	1723474	Hose Clamp	1	46	1746439	Bracket	1
12	1718029	Shut Off Valve	1	47	1701322	Extension Spring	1
13	1725124	Fuel Line	1	48	• 1100770	Hex Screw, 3/8-16 x 2-3/4	1
14	1718185	Hose Clamp	4	49	1727978	Idler Pulley	2
15	1736589	Fuel Line	1	50	1724730	Shoulder Bolt	1
16	1746246	Heat Shield Gasket	1	51	• 1107385	Flat Washer, 1/2	1
17	1186359	Flange Screw, 7/16-14 x 3/4	4	52	1185581	Bearing Sleeve	2
18	1736160	"U" Bolt, 5/16-18	2	53	1746437	Idler Arm Assembly	1
19	1736348	Shield Assembly - Heat	1	54	1736279	PTO Belt (Matched Set of 2)	1
20	1105678	Plug, Sq. Hd. Pipe (Drain)	1	55	1185689	Snap Ring	2
21	1736485	Capscrew, 7/16-20 x 1-1/4	1	56	1725093	PTO Sheave	1
22	• 1100243	Lockwasher, 3/8	6	57	1725087	Ball Double Seal Bearing	2
23	1741801	Washer	1	58	1725090	PTO Shaft	2
24	1745480	Clutch Assembly	1	59	1724896	Mount	1
25	1736298	Decal (Hot Surface)	1	60	1186047	Flat Washer, 3/8	AR
26	• 1100244	Lockwasher, 7/16	1	61	• 1110108	Locknut, 3/8-16	5
27	• 1186393	Flange Lock Nut, 3/8-16	5	62	1746435	Engine Mount Assembly	1
28	1724836	Universal Joint Assembly	1	63	1725856	Mount	2
29	• 1186345	Flange Lock Screw, 3/8-16 x 3/4	1	64	1104436	Woodruff Key, 3/16 x 3/4	1
30	• 1186231	Hex Nut, 3/8-16	1	65	• 1186348	Flange Lock Screw, 3/8-16 x 1-1/4	4
31	• 1186230	Nut, 5/16-18	4	66	• 1186308	Flange Lock Capscrew, 1/4-20 x 1/2	12
32	• 1100242	Lockwasher, 5/16	4	67	• 1100048	Capscrew, 3/8-16 x 2	3
33	1719694	Saddle Clamp	2	68	• 1100049	Capscrew, 3/8-16 x 2-1/4	1
34	1708034	Key, 1/4 x 1/4 x 1/2	1	69	1709224	Flat Washer	AR
35		Kohler Engine, 19 HP (Model KT19QS)	1				

• Common Hardware - Purchase Locally (Grade 5 where applicable)

\*Order Parts From Your Authorized Kohler Engine Dealer

**BOLENS 19 HP TRACTOR,**

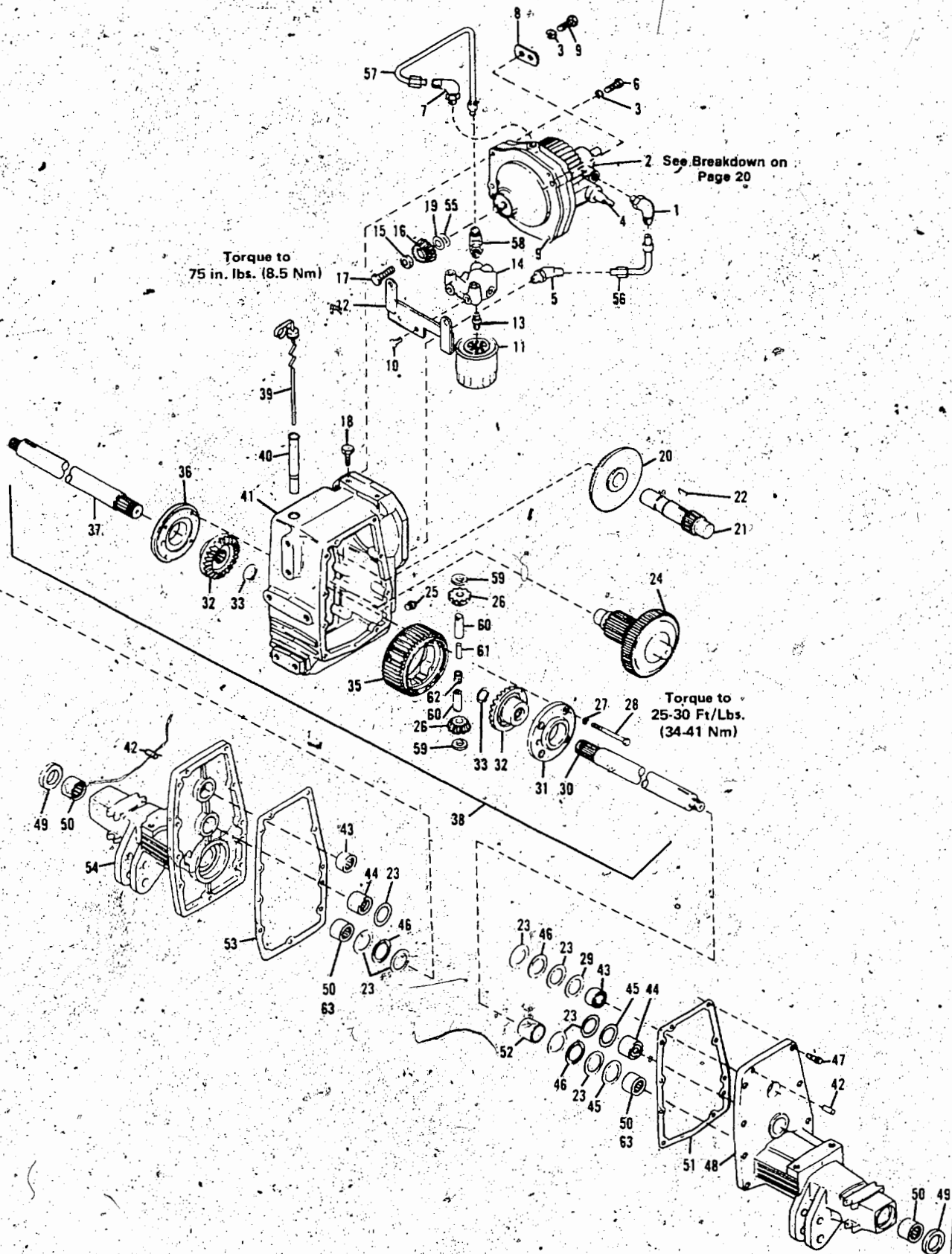


Figure 3. HYDRO AND TRANSMISSION ASSEMBLY

REF. NO.	PART NO.	DESCRIPTION	NO. REQ'D.	REF. NO.	PART NO.	DESCRIPTION	NO. REQ'D.
1	1724390	90° Elbow Fitting	1	35	1739767	Bull Gear, 44T	1
2	1732194	Eaton Hydrostatic (See Breakdown on page 20)	1	36	1724071	L.H. Bull Gear Carrier	1
3	1100243	Lockwasher, 3/8	4	37	1724807	L.H. Axle	1
4	1724370	Control Shaft Seal	1	38	1724205	Differential Assy. (Incl. Ref. Nos. 26 thru 37 & 59)	1
5	1732238	45° Elbow	1	39	1724092	Dip Stick	1
6	1100062	Hex Screw, 3/8-16 x 2-1/2	1	40	1724090	Tube	1
7	1185737	90° Elbow Fitting	1	41	1724102	Transaxle Housing	1
8	1734197	Neutral Anchor	1	42	1110189	Dowel Pin, 3/8 x 1	4
9	1100770	Hex Screw, 3/8-16 x 2-3/4	3	43	1185774	Closed End Needle Bearing	2
10	1186345	Flange Screw, 3/8-16 x 3/4	2	44	1185720	Closed End Needle Bearing	2
11	1726450	Oil Filter	1	45	1719271	Shim	AR
12	1732230	Filter Bracket	1	46	1185764	Thrust Roller Bearing	3
13	1721921	Special Coupling	1	47	1185771	Counterbore Capscrew, 3/8-16 x 1	17
14	1734749	Filter Manifold	1	48	1738048	R.H. Transaxle Housing Cover	1
15	1729559	Spacer	1	49	1185301	Oil Seal	2
16	1729531	Bevel Pinion 18T	1	50	1187206	Needle Bearing	2
17	1741832	Hex Screw, 1/4-20 x 5/8	1	51	1724086	R.H. Cover Gasket	1
18	1186347	Lock Screw, 3/8-16 x 1	2	52	1724809	Spacer	1
19	1730374	Shim. (.005)	0-1	53	1724087	L.H. Cover Gasket	1
20	1724079	Bevel Gear, 56T	1	54	1738049	L.H. Transaxle Housing Cover	1
21	1734358	Pinion, Shaft, 25T	1	55	1730375	Shim. (.015)	0-2
22	1100279	Woodruff Key	1	56	1734635	Tube Assy.	1
23	1186002	Thrust Race, .125	8	57	1734730	Tube Assy.	1
24	1734361	Cluster Gear, 16T & 40T	1	58	1185739	90° Elbow	1
25	1185930	Square Head Magnetic Pipe Plug	1	59	1715301	Thrust Washer	2
26	1731865	Bevel Pinion 16T	2	60	1732161	Pinion Shaft	2
27	1100242	Lockwasher, 5/16	4	61	1732166	Dowel Pin	1
28	1186015	Capscrew, 5/16-18 x 3-1/2 H.T.	4	62	1734339	Compression Spring	1
29	1718781	Shim	2-3	63	1185721	Needle Bearing	2
30	1724808	R.H. Axle	1	NI	1721514	Trans. Fluid, 2-1/2 Gal.	
31	1724072	R.H. Bull Gear Carrier	1	NI	1719650	Trans. Fluid, 1 Gal.	
32	1724074	Bevel Gear, 22T	2	NI	1721599	Trans. Fluid, 1 Quart	
33	1185732	External Retaining Ring	2	NI	1730118	Sealant, Gasket (3 oz.)	

• Common Hardware - Purchase Locally (Grade 5 where applicable)

BOLENS 19 HP TRACTOR

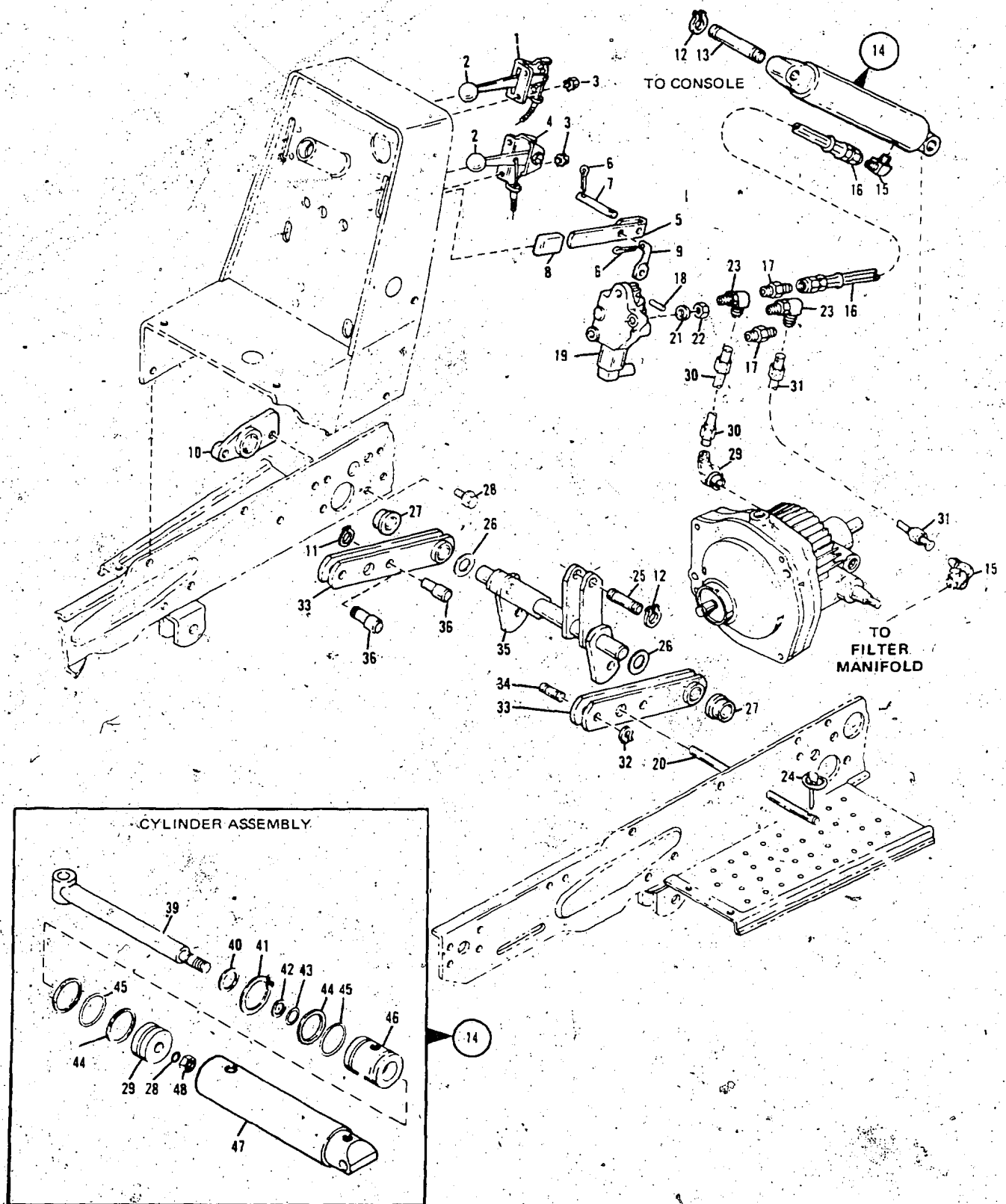


Figure 4. HAND CONTROLS AND LIFT ASSEMBLY

MODEL 1966 (1900)

REF. NO.	PART NO.	DESCRIPTION	NO. REQ'D.	REF. NO.	PART NO.	DESCRIPTION	NO. REQ'D.
1	1736465	Choke Control	1	23	1185737	90° Elbow	2
2	1724527	Knob Only	2	24	1723478	Hitch Pin	2
3	1185985	External Lockwasher Nut, No. 10-24	4	25	1724704	Cylinder Rod Pin	1
4	1736464	Throttle Control	1	26	1725602	Bowed Washer	2
5	1724744	Lift Lever	1	27	1186037	Flange Bearing	2
6	1185850	Cotter Pin, 5/64 x 3/4	3	28	1186345	Flange Screw, 3/8-16 x 3/4	4
7	1724741	Pin	1	29	1185902	45° Elbow	1
8	1736564	Handle Grip	1	30	1734633	Tubing Assy.	1
9	1724742	Lever Link	1	31	1734634	Tubing Assy.	1
10	1724707	Bearing Support	1	32	1118808	Retaining Ring	4
11	1185668	Retaining Ring	2	33	1739487	Lift Arm Anchor	2
12	1113527	Retaining Ring	4	34	1736888	Anchor Pin	2
13	1724703	Cylinder Anchor Pin	1	35	1724694	Pivot Shaft Assy.	1
14	1724520	Cylinder (Incl. Ref. Nos. 37 thru 48)	1	36	1742251	Shoulder Pin	2
15	1185739	90° Elbow	3	37	1177509	"O" Ring	1
16	1719178	Cylinder Hose	2	38	1724515	Piston	1
17	1717563	Connector	2	39	1724512	Piston Rod Assy.	1
18	1185479	Roll Pin, 3/32 x 5/8	1	40	1185266	Oil Seal	1
19	1734335	Valve	1	41	1118735	Snap Ring	1
	1726213	Seal Kit	2	42	1186019	Ring Washer	1
20	1736535	Lift Arm Stop	1	43	1177395	"O" Ring	1
21	1100241	Lockwasher, 1/4	2	44	1186018	Ring Washer	3
22	1186389	Flange Nut, 1/4-20	2	45	1186017	"O" Ring	2
				46	1724511	Cylinder Head	1
				47	1724516	Cylinder Tube Assy.	1
				48	1110154	Locknut, 5/8-18	1

• Common Hardware - Purchase Locally  
(Grade 5 where applicable)



BOLENS 19-HP TRACTOR

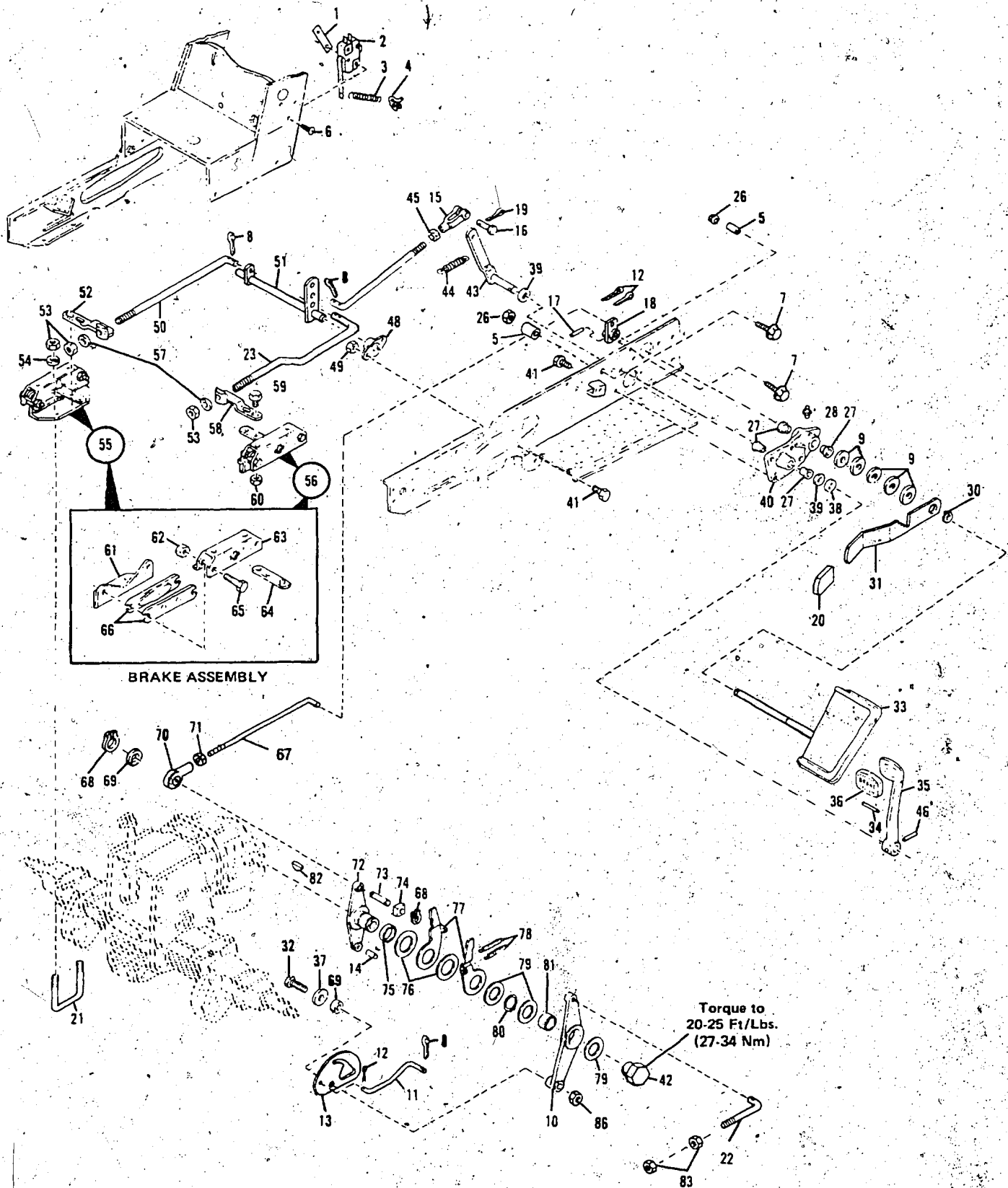
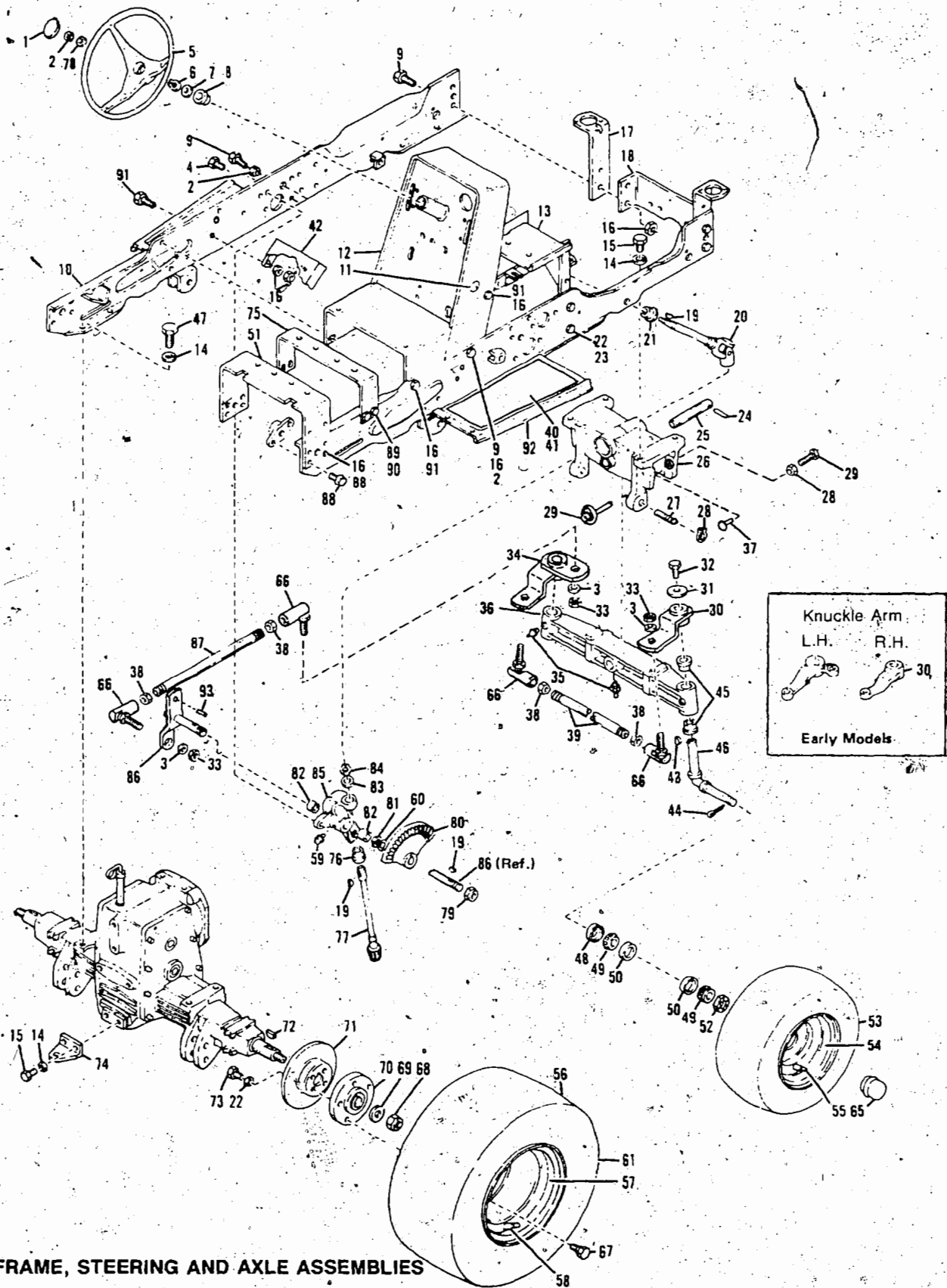


Figure 5. BRAKE AND HYDRO CONTROL ASSEMBLIES

REF. NO.	PART NO.	DESCRIPTION	NO. REQ'D.	REF. NO.	PART NO.	DESCRIPTION	NO. REQ'D.
1	1727777	Twin Type Speed Nut	1	43	1725346	Brake Arm	1
2	1725550	Brake Switch	1	44	1725367	Extension Spring	1
3	1725826	Spring	1	45	• 1186212	Nut, 3/8-24	1
4	1725536	Clamp	1	46	1713432	Drive Pin, 3/16 x 1-1/4	1
5	1740063	Spacer	2	47	1725347	Adjusting Rod	1
6	1725552	Fill. Hd. Screw, No. 4-40 x 3/4	2	48	1724457	Flanged Bearing	2
7	• 1186332	Flange Screw 5/16-18 x 1-1/4	2	49	• 1186393	Flange Lock Nut, 3/8-16	4
8	• 1185147	Cotter Pin, 3/32 x 5/8	8	50	1725364	L.H. Brake Rod	1
9	• 1107386	Flat Washer, 5/8	5		1739865	Transfer Shaft	1
10	1744084	Neutral Stop Arm	1	52	1725363	L.H. Brake Arm Extension	1
11	1739867	Lockplate Control Rod	1	53	• 1110108	Locknut, 3/8-16	6
12	• 1100349	Cotter Pin, 1/8 x 3/4	2	54	1185715	Lockwasher, 3/8	4
13	1741908	Lockplate	1	55	1724580	L.H. Brake Assembly (Incl. Ref. Nos. 61 thru 66)	1
14	1110187	Dowel Pin	1	56	1724599	R.H. Brake Assembly (Incl. Ref. Nos. 61 thru 66)	1
15	222007	Clutch Rod Yoke	1	57	• 1107383	Flat Washer, 3/8	2
16	1112587	Clevis Pin, 5/16 x 1-3/16	1	58	1725362	R.H. Brake Arm Extension	1
17	1713432	Drive Pin, 3/16 x 1-1/4	1	59	• 1186347	Flange Lock Screw, 3/8-16 x 1	4
18	1744080	Control Arm	1	60	• 1186393	Flange Lock Nut, 3/8-16	4
19	• 1100349	Cotter Pin, 1/8 x 3/4	1	61	1724473	Brake Support	1
20	1728696	Handle Grip	1	62	1724591	Locknut	2
21	1724468	"U" Bolt, 3/8-16	2	63	1724587	Secondary Bracket	1
22	1732189	Neutral Adjuster Rod	1	64	1724588	Actuating Lever	1
23	1734371	R.H. Brake Rod	1	65	1724590	Bolt	2
24	• 1103195	Hex Screw, 5/16-18 x 5/8	1	66	1724589	Stator Plate	2
25	• 1186230	Flat Washer, 5/16	2	67	1744083	Speed Control Rod	1
26	• 1186391	Flange Lock Nut, 5/16-18	2	68	1185219	Retaining Ring	2
27	1185802	Flange Bearing	4	69	1732369	Spacer	1
28	1185976	Grease Fitting	1	70	1721612	Rod End	1
29	• 1100266	Flat Washer, 5/8	1	71	• 1186246	Nut, 1/2-13	1
30	1185668	Retaining Ring	1	72	1744082	Speed Control Arm	1
31	1739863	Brake Lock	1	73	1724445	Control Pin	1
32	• 1100086	Hex Screw, 3/8-16 x 1-3/4	1	74	1720699	Cushion Block	1
33	1744078	R.H. Pedal	1	75	1720706	Bearing	1
34	1120209	Roll Pin, 3/16 x 3/4	1	76	1720361	Thrust Washer	2
35	1725520	Brake Pedal	1	77	1725359	Neutralizer Arm	2
36	1725518	Pedal Pad	1	78	1724582	Extension Spring	2
37	1701055	Wrought Washer	1	79	1720529	Thrust Washer	3
38	1701411	Bowed Washer	1	80	1185732	External Retaining Ring	1
39	1715301	Thrust Washer	AR	81	1732833	Bearing	1
40	1725030	Speed Control Bearing Support	1	82	1104435	Woodruff Key	1
41	• 1186345	Flange Lockscrew, 3/8-16 x 3/4	8	83	• 1186232	Nut, 7/16-14	2
42	1730087	Hydro Control Nut	1	86	1185506	Self Locking Jam Nut, 3/8-16	1

• Common Hardware - Purchase Locally (Grade 5 where applicable)

**BOLENS 19 HP TRACTOR**



**Figure 6. FRAME, STEERING AND AXLE ASSEMBLIES**  
16

MODEL 1966 (1900)

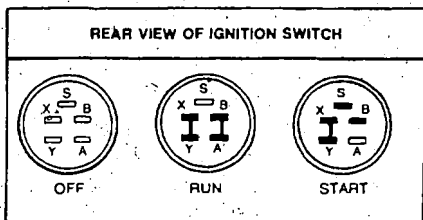
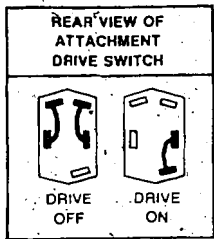
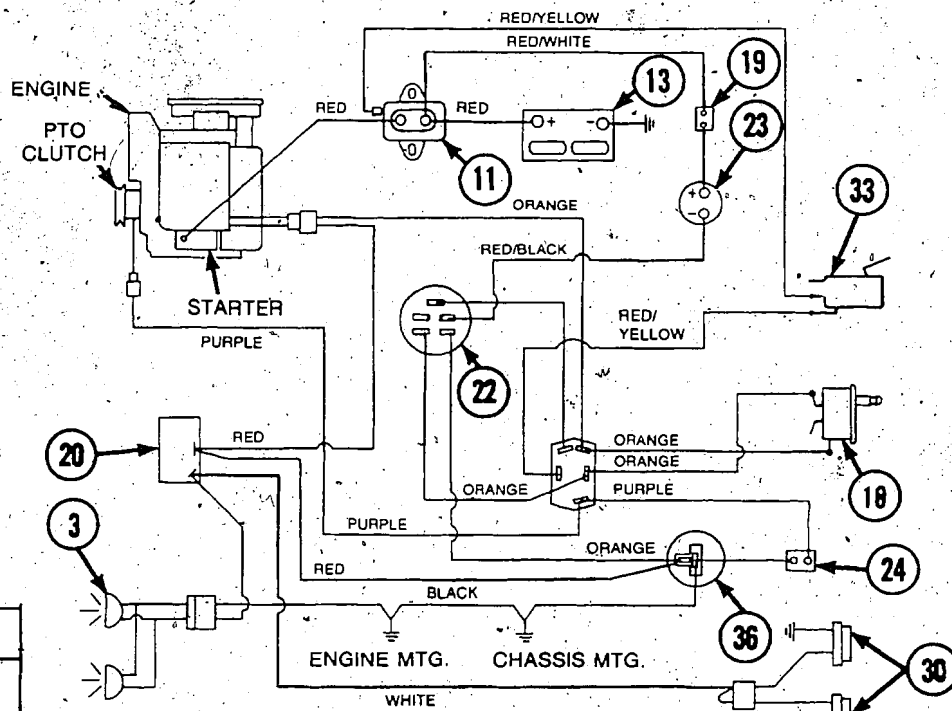
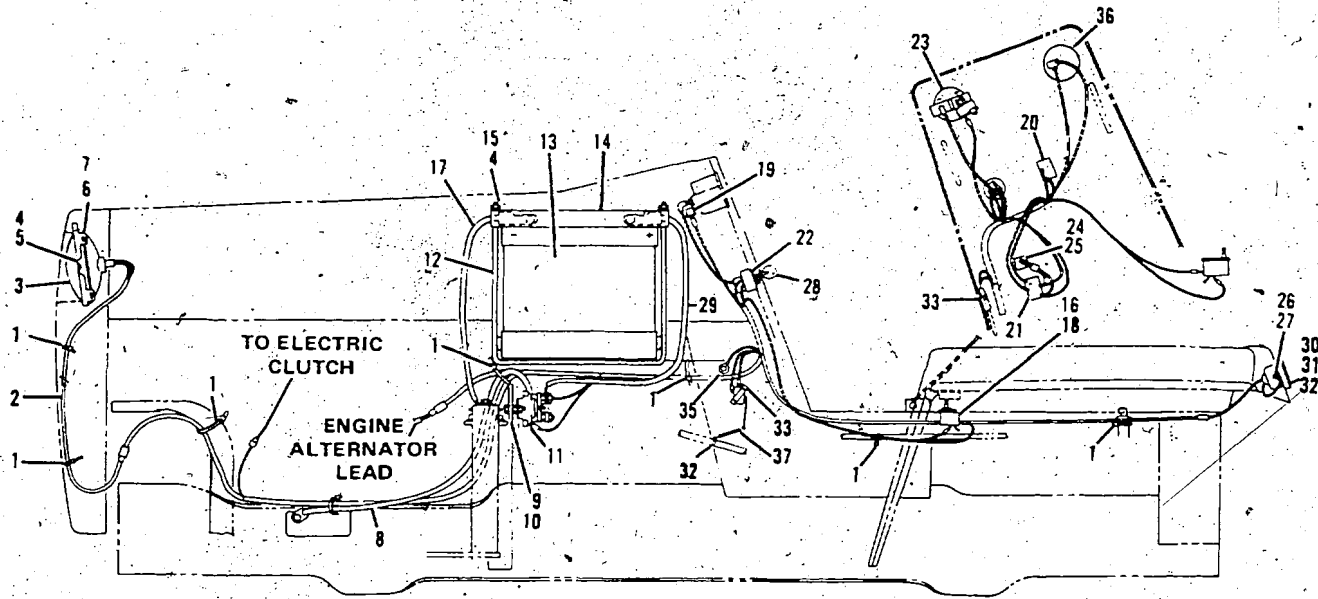
REF. NO.	PART NO.	DESCRIPTION	NO. REQ'D.	REF. NO.	PART NO.	DESCRIPTION	NO. REQ'D.
1	1746382	Cap, Steering Wheel	1	44	• 1104222	Cotter Pin, 3/16 x 1-1/2	2
2	• 1110108	Lock Nut, 3/8-16	3	45	1185728	Flange Bearing	4
3	• 1700247	Lock Washer, 5/8	4	46	1735766	Spindle, Wheel	2
4	• 1186345	Flange Lock Screw, 3/8-16 x 3/4	1	47	• 1100054	Capscrew, 1/2-13 x 1	4
5	1736980	Steering Wheel	1	48	1719601	Felt, Seal	2
6	1113527	Retaining Ring	1	49	1185661	Bearing Cone	4
7	1708012	Flat Washer	AR	50	1185660	Bearing Cup	4
8	1723994	Bearing, Steering	1	51	• 1725298	Support, Seat	1
9	• 1100043	Capscrew, 3/8-16 x 1-1/4	6	52	1185758	Castle Nut, 1-1/4	2
10	1736252	Frame, Left Hand	1	53	1732927	Tire, 16 x 6.50-8	2
11	1700311	Plug	1	54	1734880	Wheel	2
12	1741444	Support, Panel	1	55	1718086	Valve Stem	2
13	1741442	Support	1	56	1732926	Tire, 23 x 10.50-12	2
14	• 1100245	Lockwasher, 1/2	10	57	1724718	Wheel	2
15	• 1100055	Capscrew, 1/2-13 x 1-1/4	6	58	1718086	Valve Stem	4
16	• 1186393	Flange Lock Nut, 3/8-16	14	59	1185976	Grease Fitting	1
17	1727738	Support Hanger	2	60	1709224	Shim, .030	AR
18	1736537	Brace	1	65	1719599	Cap	2
19	1104436	Woodruff Key, 3/16 x 3/8	4	66	1719003	Ball Joint	4
20	1725078	Shaft, Steering	1	67	101085	Bolt, Hub	10
21	1725077	Bearing, Steering	1	68	• 1120390	Lock Nut, 3/4-10	2
22	• 1100243	Lockwasher, 3/8	12	69	1708599	Spacer	2
23	• 1108212	Capscrew, 3/8-16 x 5/8	4	70	1724815	Wheel Hub	2
24	1185376	Roll Pin, 3/16 x 1-1/2	2	71	1724478	Disc Brake	2
25	1724676	Axle Pivot	1	72	1100281	Woodruff Key, 5/16 x 1-1/8	2
26	1733014	Bolster	1	73	• 1100046	Capscrew, 3/8-16 x 1	8
27	1724935	Pin, Pivot	2	74	1724698	Draw Bar	1
28	• 1100045	Hex Screw 5/16-18 x 1	2	75	1725318	Support, Transmission	1
29	• 1186258	Jam Nut 5/16-18	2	76	1725075	Flange Bushing	1
30	1735763	Knuckle Arm, R.H. (2)	1	77	1743577	Steering Pinion Assembly	1
	1747227	Knuckle Arm, R.H. (3)	1	78	• 1107383	Flat Washer, 3/8	1
31	1717567	Flat Washer, 5/16	2	79	1185093	Self-Locking Nut, 3/4-16	1
32	• 1186329	Fl. Lock Screw, 5/16-18 x 7/8	2	80	1725082	Gear, Steering	1
33	1185082	Lock Nut, 5/8-18	4	81	1725069	Nylon Washer	1
34	1735727	Knuckle Arm, L.H. (2)	1	82	1185583	Sleeve Bearing	2
	1747229	Knuckle Arm, L.H. (3)	1	83	1715301	Thrust Washer	1
35	1185976	Grease Fitting	3	84	1118808	Retaining Ring	1
36	1737044	Front Axle	1	85	1725084	Support, Steering	1
37	1745892	Weld Pin	2	86	1736445	Arm, Steering (2)	1
38	1186216	Nut, Hex, 5/8-18	4		1747223	Arm, Steering (3)	1
39	1735764	Tie Rod	1	87	1736278	Drag Link	1
40	1746247	Pad, Foot Rest (L.H.)	1	88	• 1186347	Screw, Fl. Lock 3/8-16 x 1	8
41	1736567	Pad, Foot Rest (R.H.)	1	89	• 1186329	Flange Screw, 5/16-18 x 3/4	3
42	1746261	Frame Support	1	90	• 1186391	Flange Lock Nut, 5/16-18	4
43	1186034	Woodruff Key, 1/4 x 7/8	2	91	• 1100046	Capscrew, 3/8-16 x 1	5
				92	1736253	R.H. Frame	1
				93	1185206	Roll Pin, 3/8 x 1 (3)	1

• Common Hardware - Purchase Locally (Grade 5 where applicable)

(2) Serial Numbers 0200101 thru 0299999

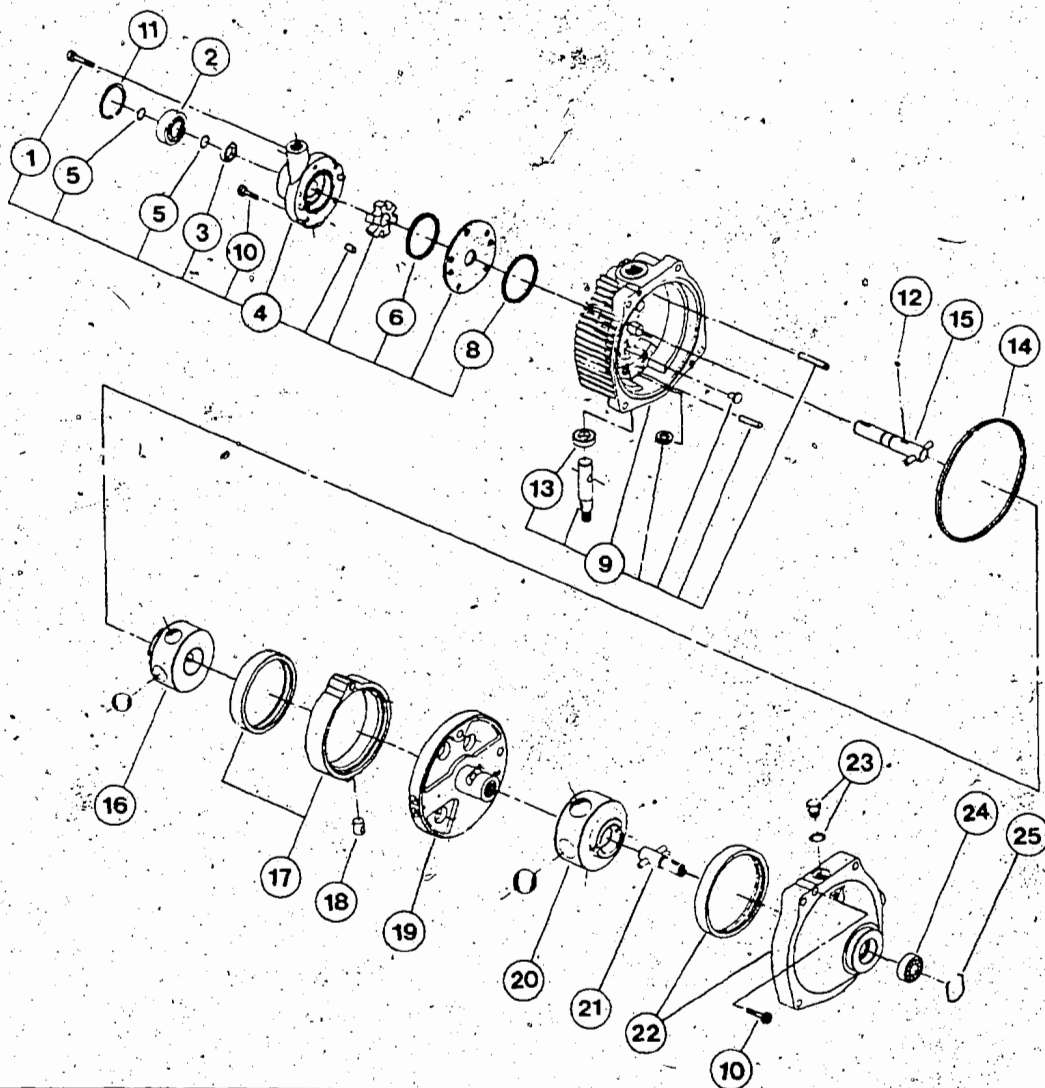
(3) Serial Numbers 0300101 thru 0399999

**BOLENS 19 HP TRACTOR**



REF. NO.	PART NO.	DESCRIPTION	NO. REQ'D.	REF. NO.	PART NO.	DESCRIPTION	NO. REQ'D.
1	1805345	Cable Ties	8	20	1724894	Headlight Switch	1
2	1727169	Headlight Harness	1	21	1725098	PTO Switch	1
3	1726435	Headlight (Mfg. No. 4406-1)	2	22	1721409	Ignition Switch (Incl. Ref. No. 28)	1
4	1107381	Flat Washer, 1/4	6	23	1739205	Ammeter	1
5	1727379	Pop Rivets 3/16 x 3/8	4	24	1734824	Clutch Lamp (Incl. Ref. No. 25)	1
6	1806805	Retaining Plate	2	25	1735285	Bulb (Mfg. No. 73)	1
7	1806808	Retainer	2	26	1100240	Lockwasher, No. 10	4
8	1728940	Starter Cable	1	27	1186208	Nut, No. 10-32	4
9	1186389	Flange Nut, 1/4-20	4	28	1718266	Key Only	1
10	1100805	Capscrew, 1/4-20 x 3/4	2	29	1725374	Battery Cable - Pos.	1
11	1740056	Starter Solenoid	1	30	1725312	Tail Light (Incl. Ref. No. 31)	2
12	1740804	"U" Bolt	1	31	" "	Bulb (Mfg. No. GE194)	2
13	1740009	Battery	1	32	1725536	Clamp	1
14	1739631	Hold Down Battery	1	33	1725550	Brake Switch	1
15	1186229	Lock Nut, 1/4-20	2	34	1741194	Main Harness	1
16	1734472	Switch Seal	1	35	1186231	Nut, 3/8-16	1
17	1725373	Battery Cable - Neg.	1	36	1742197	Hour Meter	1
18	1734366	Seat Switch	1	37	1725826	Spring	1
19	1729914	Circuit Breaker, 30 Amp	1				

\*\*Not Stocked. Purchase from your local automotive or electrical supplier.  
 •Common Hardware - Purchase Locally (Grade 5 where applicable)



REF. NO.	PART NO.	DESCRIPTION	NO. REQ'D.	REF. NO.	PART NO.	DESCRIPTION	NO. REQ'D.
1		Socket Hd. Capscrew 5/16-18 x 1-3/4 (Included with Ref. No. 4)	1	12	1744159	Drive Pin (Included with Ref. No. 4)	1
2	1744151	Ball Bearing (Input)	1	13	1724376	Oil Seal (Included with Ref. No. 4)	1
3	1724381	Oil Seal (Included with Ref. No. 4)	1	14	1744185	Square Seal Ring	1
4	1744189	Charge Pump Kit (Incl. Ref. Nos. 1, 3, 5, 6, 8, 10 & 12)	1	15	1744162	Input Shaft Sub Assembly (Keyed)	1
5	1724375	Snap Ring (Included with Ref. No. 4)	1	16	1744164	Pump Rotor & Ball Assembly	1
6	1744155	Sq. Seal Ring (Included with Ref. No. 4)	1	17	1744184	Cam Ring Assembly	1
8	1744157	Sq. Seal Ring (Included with Ref. No. 4)	1	18	1744176	Cam Ring Insert	1
9	1744154	Cover Sub Assembly (Incl. Ref. No. 13)	1	19	1744166	Pintle Assembly (Incl. Internal Parts)	1
10		Socket Hd. Capscrew 5/16-18 x 1-1/4 (Included with Ref. No. 4)	1	20	1744177	Motor Rotor & Ball Sub Assembly	1
11	1744171	Retaining Ring	6	21	1744010	Output Shaft Sub Assembly	1
				22	1744180	Body Assembly (Incl. Ref. Nos. 21, 24, 25)	1
				23	1744179	O-Ring Plug Sub Assembly	1
				24	1104440	Ball Bearing (Output)	1
				25	1724380	Retaining Ring	1

• Common Hardware - Purchase Locally (Grade 5 where applicable)