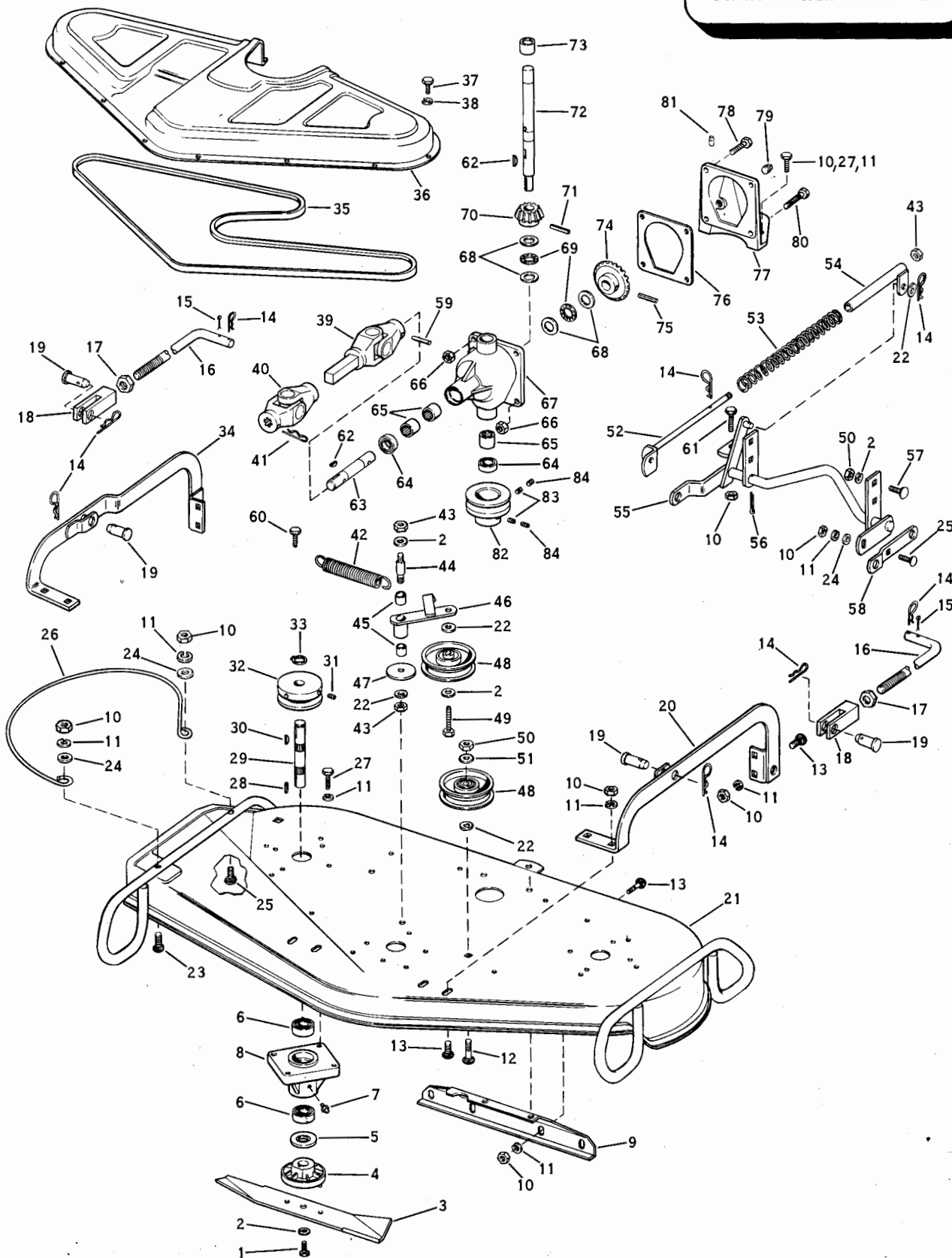


ILLUSTRATED PARTS LIST

BOLENS

MODEL 18441-01

32 INCH CENTER MOUNTED ROTARY MOWER ATTACHMENT



ROTARY MOWER MODEL 18441-01

| Ref. No. | Part No. | Description | No. Req'd. |
|----------|----------|----------------------------------|------------|
| 1 | 1111709 | Capscrew | 3 |
| 2 | 1100243 | Lockwasher 3/8 | 11 |
| 3 | 1715289 | Blade | 3 |
| 4 | 1711879 | Blade Hub | 3 |
| 5 | 1712566 | Slinger | 3 |
| 6 | 1120502 | Ball Bearing | 6 |
| 7 | 1110086 | Grease Fitting | 3 |
| 8 | 1714734 | Bearing Housing | 3 |
| 9 | 1716313 | Support | 1 |
| 10 | 1103839 | Hex Nut 5/16-18 | 16 |
| 11 | 1100242 | Lockwasher 5/16 | 19 |
| 12 | 1106933 | Capscrew 3/8-16 x 2-1/4 | 1 |
| 13 | 1111265 | Carriage Bolt 5/16-18 x 3/4 | 10 |
| 14 | 1703011 | Spring Cotter | 9 |
| 15 | 1100350 | Cotter Pin 1/8 x 1 | 4 |
| 16 | 1714544 | Link Rod | 2 |
| 17 | 1108891 | Jam Nut 5/16-28 | 2 |
| 18 | 1714573 | Rod End | 2 |
| 19 | 1713553 | Clevis Pin | 4 |
| 20 | 1714865 | Bail, L.H. | 1 |
| 21 | 1716306 | Base | 1 |
| 22 | 1107383 | Flat Washer 3/8 | 5 |
| 23 | 1111267 | Carriage Bolt 5/16-18 x 1-1/4 | 1 |
| 24 | 1100255 | Flat Washer 5/16 | 2 |
| 25 | 1111266 | Carriage Bolt 5/16-18 x 1 | 1 |
| 26 | 1716305 | Blade Guard | 1 |
| 27 | 1106876 | Capscrew 5/16-18 x 7/8 | 14 |
| 28 | 1185188 | Sq Key 3/16 x 7/8 | 3 |
| 29 | 1714759 | Shaft | 3 |
| 30 | 1104436 | Woodruff Key 3/16 x 3/4 | 3 |
| 31 | 1103470 | Set Screw 5/16-18 x 1/2 | 6 |
| 32 | 1714758 | Pulley | 3 |
| 33 | 1118809 | Retaining Ring | 3 |
| 34 | 1714864 | Bail, R.H. | 1 |
| 35 | 1716307 | Belt 70.3" | 1 |
| 36 | 1715548 | Belt Guard | 1 |
| 37 | 1106830 | Capscrew 1/4-20 x 1/2 | 12 |
| 38 | 1100241 | Lockwasher 1/4 | 12 |
| *39 | 1716309 | Universal Drive | 1 |
| *40 | 1715008 | Universal Joint | 1 |
| 41 | 1716369 | Cotter Pin (Spec) | 1 |
| 42 | 1701322 | Spring | 1 |
| 43 | 1110108 | Locknut 3/8-16 | 3 |

| Ref. No. | Part No. | Description | No. Req'd. |
|----------|----------|-----------------------------|------------|
| 44 | 1715337 | Stud | 1 |
| 45 | 1715538 | Bushing | 2 |
| 46 | 1716304 | Idler Arm | 1 |
| 47 | 1893445 | Flat Washer | 1 |
| 48 | 1714742 | Idler Puller | 2 |
| 49 | 1107207 | Capscrew 3/8-24 x 1-1/4 | 1 |
| 50 | 1103840 | Hex Nut 3/8-16 | 5 |
| 51 | 1711284 | Spacer | 1 |
| 52 | 1714868 | Guide | 1 |
| 53 | 1714872 | Spring | 1 |
| 54 | 1714871 | Tube | 1 |
| 55 | 1714750 | Lift Arm | 1 |
| 56 | 1100350 | Cotter Pin 1/8 x 1 | 4 |
| 57 | 1111285 | Carriage Bolt 3/8-16 x 1 | 5 |
| 58 | 1714749 | Adjusting Arm | 1 |
| 59 | 1185220 | Roll Pin 3/16 x 1-1/2 | 1 |
| 60 | 1715809 | Anchor Bolt | 1 |
| 61 | 1106878 | Capscrew 5/16-18 x 1 | 1 |
| 62 | 1104436 | Woodruff Key 3/16 x 3/4 | 2 |
| 63 | 1713676 | Shaft | 1 |
| 64 | 1185296 | Seal | 2 |
| 65 | 1185010 | Needle Bearing | 3 |
| 66 | 1110107 | Locknut 5/16-18 | 4 |
| 67 | 1716345 | Gear Case Only | 1 |
| | 1716412 | Gear Case Assy | 1 |
| 68 | 1185432 | Thrust Race | 4 |
| 69 | 1185431 | Thrust Bearing | 2 |
| 70 | 1713664 | Gear, 16T | 1 |
| 71 | 1185348 | Roll Pin 1/4 x 1-1/4 | 1 |
| 72 | 1714754 | Shaft | 1 |
| 73 | 1713665 | Needle Bearing | 1 |
| 74 | 1713663 | Gear, 23T | 1 |
| 75 | 1185284 | Roll Pin 1/4 x 2 | 1 |
| 76 | 1713662 | Gasket | 1 |
| 77 | 1716386 | Cover | 1 |
| 78 | 1106878 | Capscrew 5/16-18 x 1 | 2 |
| 79 | 1105678 | Plug | 1 |
| 80 | 1106882 | Capscrew 5/16-18 x 1-1/4 | 2 |
| 81 | 1185626 | Air Vent Fitting | 1 |
| 82 | 1714762 | Pulley | 1 |
| 83 | 1185550 | Set Screw 3/8-16 x 5/16 | 2 |
| 84 | 1185551 | Lock Screw 3/8-16 x 3/16 | 2 |

* 1714207 Repair Kit for Joint Marked 6N

* 1714208 Repair Kit for Joint Marked NEAPCO



BOLENS DIVISION

PORT WASHINGTON, WISCONSIN

America's Finest Outdoor Power Equipment