

BOLENS 54 INCH MOWER ATTACHMENT

SEE FIGURE 2, PAGE 4
FOR BREAKDOWN

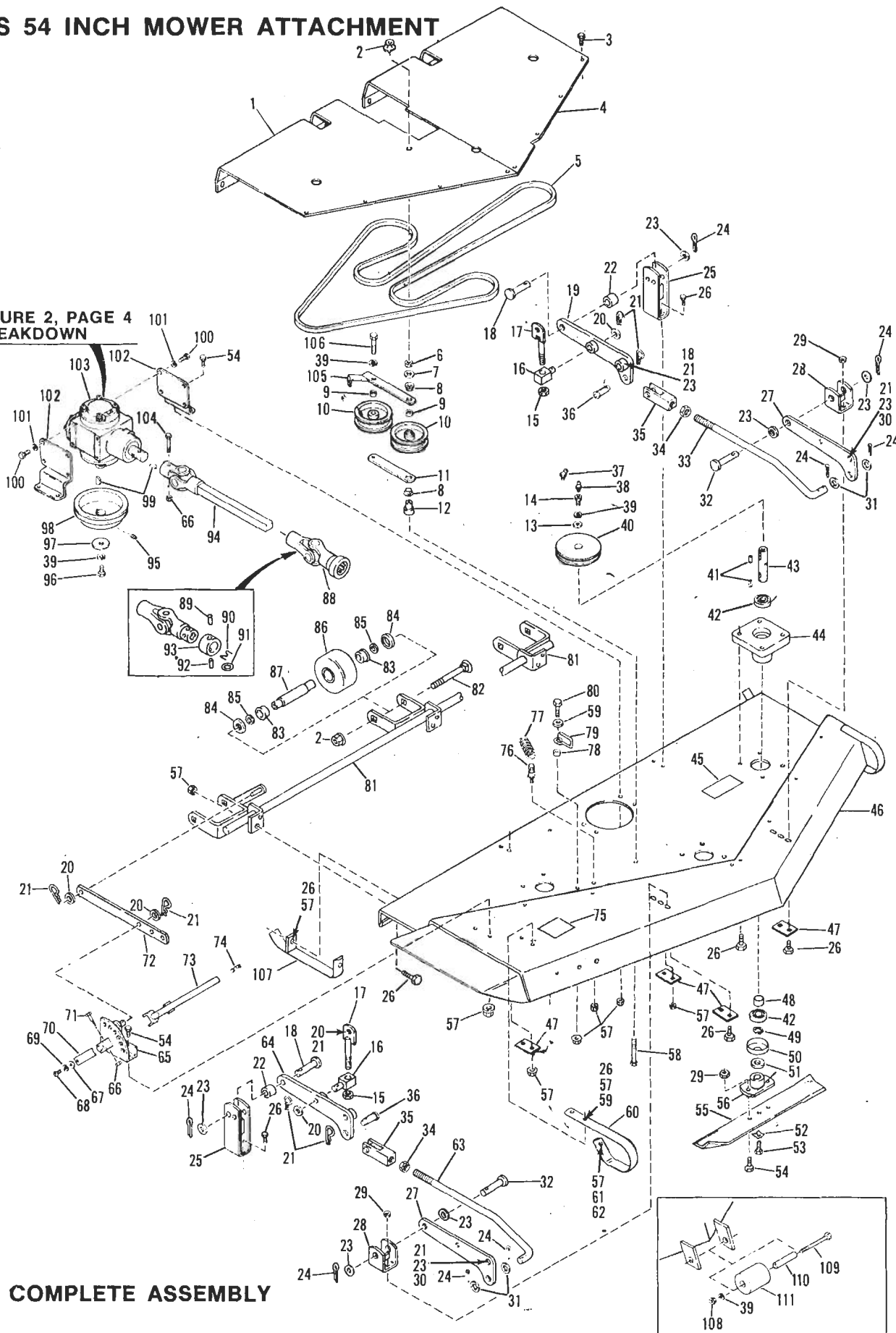


Figure 1 COMPLETE ASSEMBLY

MODEL 18071 - Serial Number 0100101 thru 0299999

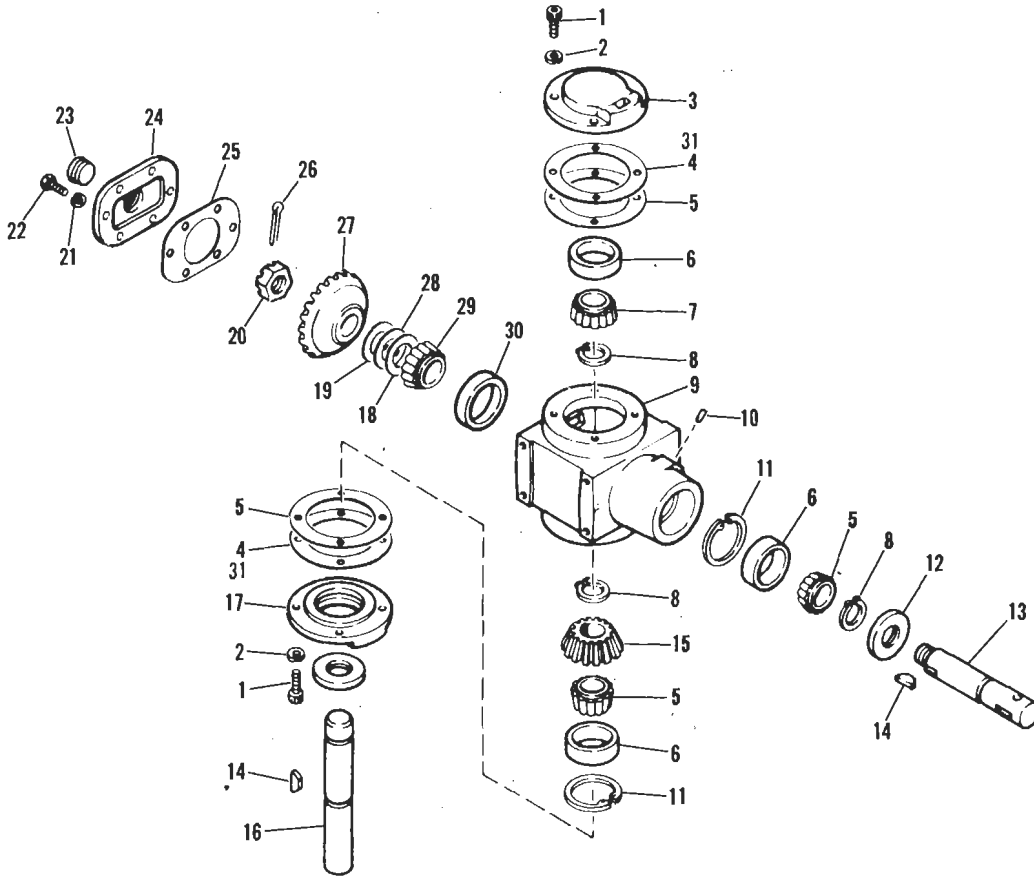
REF. NO.	PART NO.	DESCRIPTION	NO. REQ'D.
1	1722903	Right Hand Belt Cover	1
2	1186393	Nut, Flange Whiz Lock	4
3	1185712	Self Thread Screw, No. 10-20 x 1/2	17
4	1722902	Left Hand Belt Cover	1
5	1726723	V-Belt	1
6	1186259	Jam Nut, 3/8-16	1
7	1100265	Flat Washer	1
8	1714299	Nylon Bushing	2
9	1718651	Spacer	2
10	1724488	Idler Pulley	2
11	1718649	Idler Arm	1
12	1722884	Idler Spacer	1
13	1701055	Flat Washer	3
14	1719331	Bolt	3
15	1110110	Lock Nut, 1/2-13	2
16	1724316	Stud	2
17	1715404	Link Assembly	2
18	1718772	Clevis Pin	4
19	1724318	Left Hand Link	1
20	1107385	Flat Washer, 1/2	6
21	1723478	Spring Cotter	12
22	1718555	Tubular Spacer	2
23	1107386	Flat Washer, 5/8	10
24	1100351	Cotter Pin, 1/8 x 1-1/4	8
25	1722720	Rear Lift Bracket Assy.	2
26	1100078	Capscrew, 5/16-18 x 7/8	30
27	1722726	Right Hand Link	2
28	1722947	Lift Bracket Assy., Front	2
29	1110107	Lock Nut, 5/16-18	10
30	1719367	Clevis Pin	2
31	1107387	Flat Washer, 3/8	4
32	1708040	Clevis Pin	2
33	1722805	Left Hand Rod	1
34	1186235	Hex Nut, 5/8-11	2
35	1714573	Rod End	2
36	1719324	Clevis Pin	2
37	1110086	Grease Fitting, 45°	1
38	1104954	Grease Fitting	2
39	1100243	Lockwasher, 3/8	5
40	1724940	Pulley	3
41	1108852	Square Key, 3/16 x 3/4	6
42	1185828	Ball Bearing	6
43	1722887	Drive Shaft	3
44	1722865	Bearing Housing	3
45	1724840	Decal, Belt Drive	1
46	1726724	Base Assy. (1)	1
	1728616	Base Assy. (2)	1
47	1720372	Support Plate	4
48	1720999	Spacer	3
49	1185708	Retaining Ring	3
50	1716744	Cap	3
51	1185708	Retaining Ring (1)	1
	1700821	Thrust Washer (2)	1
52	1185715	Lockwasher, 3/8 (Pyramidal Type)	3
53	1100009	Capscrew, 3/8-24 x 1	3
54	1100044	Capscrew, 5/16-18 x 3/4	12

REF. NO.	PART NO.	DESCRIPTION	NO. REQ'D.
55	1722883	Cutter Blade	3
56	1722882	Hub Assembly	3
57	1186391	Nut, Whiz Lock, 5/16	23
58	1111614	Capscrew, 3/8-16 x 3	1
59	1107382	Flat Washer, 5/16	3
60	1722896	Right Hand Runner	1
61	1100043	Capscrew, 5/16-18 x 1	1
62	1803327	Flat Washer, 5/16	1
63	1722806	Right Hand Rod	1
64	1724317	Right Hand Link	1
65	1718667	Quadrant Assembly	1
66	1110106	Lock Nut, 1/4-20	2
67	1103959	Flat Washer, No. 10	1
68	1114748	Machine Screw, No. 10-32 x 1/2	1
69	1100240	Lockwasher, No. 10	1
70	1725403	Spring	1
71	1100811	Capscrew, 1/4-20 x 1-1/2	1
72	1722888	Lift Link	1
73	1718664	Handle Assembly	1
74	1891696	Roll Pin, 5/16 x 1-1/2	1
75	1725503	Decal (Cutting Hgt. Adj.)	1
76	1715210	Spring Anchor Bolt	1
77	1706822	Extension Spring	1
78	1714665	Spacer	1
79	1724828	Belt Guide	1
80	1100808	Capscrew, 5/16-18 x 1-1/4	1
81	1722894	Wheel Yoke Assembly	1
82	1186143	Carriage Bolt, 3/8-16 x 4-1/2	3
83	1185695	Ball Bearing	6
84	1894386	Cupped Washer	6
85	1705108	Flat Washer	6
86	1717649	Roller	3
87	1717737	Bearing Axle	3
*88	1723790	Universal Joint Assembly (Incl. Ref. Nos. 89 thru 93)	1
89	1118922	Drive Pin, 3/16 x 1/2	1
90	1723782	Return Spring	1
91	1725334	Thrust Washer	1
92	1187762	Groove Pin, 3/16 x 3/8	1
93	1723781	Locking Collar	1
*94	1722632	Drive Assembly	1
95	1103466	Set Screw, 5/16-18 x 3/8	2
96	1111708	Capscrew, 3/8-24 x 5/8	1
97	1703052	Flat Washer	1
98	1718659	Sheave	1
99	1100276	Woodruff Key, 1/4 x 7/8	2
100	1103195	Capscrew, 5/16-18 x 5/8	8
101	1100242	Lockwasher, 5/16	8
102	1722901	Support Bracket	2
103	1718650	Gear Box Assembly	1
104	1111601	Capscrew, 1/4-20 x 1-3/4	1
105	1718642	Idler Arm Assembly	1
106	1100012	Capscrew, 3/8-24 x 1-3/4	1
107	1726688	Right Hand Runner Assy.	1
108	1186231	Hex Nut, 3/8-16 (1)	1
109	1103230	Capscrew, 3/8-16 x 6 (1)	1
110	1720578	Spacer (1)	1
111	1720577	Roller (1)	1

(1) Serial Number 0100101 thru 0199999
 (2) Serial Number 0200101 thru 0299999

*1714208 Repair Kit for Joint Marked NEAPCO
 *1714207 Repair Kit for Joint Marked 6N

BOLENS 54 INCH MOWER ATTACHMENT MODEL 18071 - Serial Number 0100101 thru 0299999



REF. NO.	PART NO.	DESCRIPTION	NO. REQ'D.
1	1185822	Capscrew, 5/16-18 x 3/4	8
2	1100242	Lockwasher, 5/16	8
3	1718620	Bearing Retainer	1
4	1719501	Gasket	2
5	1717456	Gasket	10
6	1185660	Bearing Cup	3
7	1185661	Bearing Cone	3
8	1185689	Retaining Ring	3
9	1717446	Gear Case (Incl. Ref. Nos. 18, 19, 28, 29 & 30)	1
10	182682	Breather	1
11	1118735	Retaining Ring	2
12	1185687	Oil Seal	2
13	1718622	Input Shaft	1
14	1709611	Woodruff Key, 1/4 x 7/8	2
15	1717457	Bevel Pinion, 18 T	1
16	1718621	Shaft, Output	1

REF. NO.	PART NO.	DESCRIPTION	NO. REQ'D.
17	1717454	Bearing Retainer	1
18	1800750	Shim, 1-1/2 x .003	1
19	1800338	Shim, .015	1
20	1185662	Slotted Nut, 7/8-14 UNF	1
21	1100241	Lockwasher, 1/4	6
22	1185823	Capscrew, 1/4-20 x UNC-3	6
23	1185824	Plug, 3/4-14 NPT	1
24	1717448	Cover	1
25	1717449	Gasket Cover	1
26	1100352	Cotter Pin, 1/8 x 1-1/2	1
27	1717459	Gear, 29 T	1
28	1800751	Shim, 1-1/2 x .005	1
29	1185688	Bearing Cone	1
30	1185118	Bearing Cup	1
31	1721346	Gasket .030 (2)	1
	1718650	Gear Case Assy. (Incl. Ref. Nos. 1 thru 31)	1

(1) Serial Number 0100101 thru 0199999
 (2) Serial Number 0200101 thru 0299999

Figure 2 GEAR CASE ASSEMBLY