

BOLENS 17 HP TRACTOR

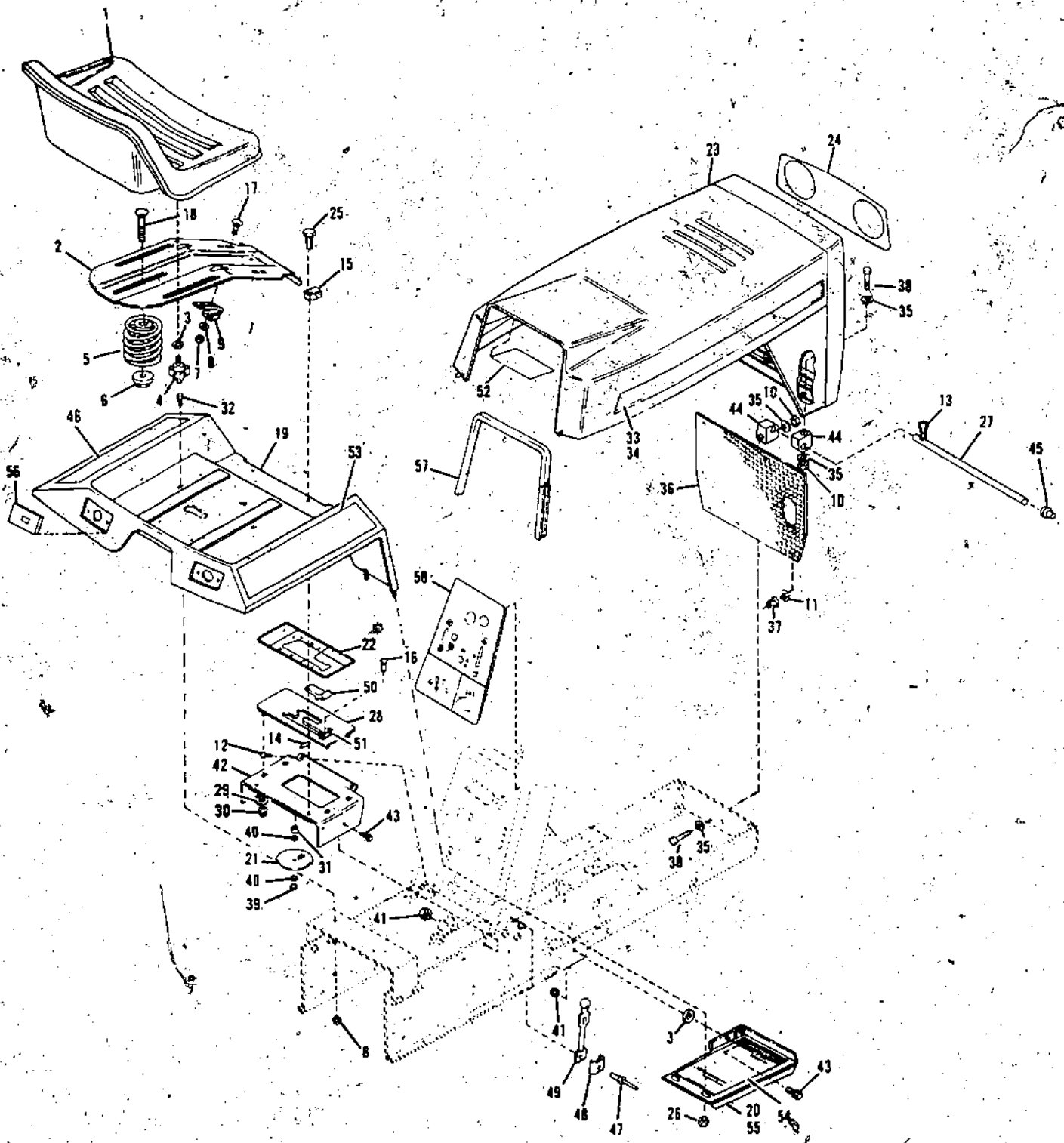


Figure 1. TRIM ASSEMBLY.

REF. NO.	PART NO.	DESCRIPTION	NO. REQ'D.	REF. NO.	PART NO.	DESCRIPTION	NO. REQ'D.
1	1746380	Seat	1	33	1746210	L.H. Identification Decal (1)	1
2	1734115	Seat Support	1		1748709	L.H. Identification Decal (2)	1
3	• 1100256	Flat Washer, 3/8	4	34	1746211	R.H. Identification Decal (1)	1
4	1734269	Adjusting Knob	2		1748708	R.H. Identification Decal (2)	1
5	1733960	Spring	1	35	• 1107382	Flat Washer 5/16	8
6	1735125	Nut & Washer	1	36	1739112	Grille Screen	1
7	• 1186229	Nut 1/4-20	1	37	1736399	Flange Locknut	4
8	• 1100241	Flat Washer 1/4	1	38	• 1100799	Hex Hd. Screw 5/16-18 x 1-1/2	4
9	1734515	Actuator Bracket	1	39	• 1734398	Lock Nut 1/4-20	1
10	• 1110107	Locknut 5/16-18	4	40	• 1107381	Flat Washer 1/4	2
11	1185418	Flat Washer	4	41	• 1186393	Flange Locknut 3/8-16	6
12	1739688	Thd. Cutting Screw 5/16-18 x 5/8	2	42	1746323	Tunnel Assembly	1
13	• 1100362	Cotter Pin 3/32 x 1/2	1	43	• 1186345	Flange Lock Screw 3/8-16 x 3/4	4
14	1185232	Roll Pin 3/16 x 1-1/4	1	44	1736340	Pivot	x
15	1735265	Swivel Block	2	45	1728072	Push Nut	1
16	1185878	Pop Rivet, 3/16	2	46	1746214	Fender Decal L.H. (1)	1
17	• 1186067	Carriage Bolt, 1/4-20 x 1/2	1		1749624	Pop Rivet 3/16 x 1/2	2
18	• 1186130	Carriage Bolt, 3/8-16 x 1-1/4	1	48	1727126	Clip	2
19	1742608	Fender Assembly (1)	1	49	1727127	Latch	2
	1748574	Fender Assembly (2)	1	50	1738817	Shift Lever Stop	1
20	1746566	Foot Rest R.H.	1	51	1738815	Stop Bracket	1
21	1734084	Shift Shield	1	52	1745681	Instruction Decal (1)	1
22	1784353	Instruction Decal	1		1748716	Instruction Decal (2)	1
23	1746203	Hood & Grille (1)	1	53	1746215	Fender Decal R.H. (1)	1
	1749566	Hood & Grille (2)	1		1749625	Fender Decal R.H. (2)	1
24	1746209	Grille Decal (1)	1	54	1746139	Foot Rest Pad	2
	1748707	Grille Decal (2)	1	55	1746565	Foot Rest L.H.	1
25	1186332	Fl. Hd. Screw 5/16-18 x 1-1/4	2	56	1725615	Reflector	2
26	• 1186391	Flange Locknut 5/16-18	6	57	1726932	Trim	1
27	1736341	Pivot Rod	1	58	1751471	Instrument Panel Decal	1
28	1738819	Shift Plate Assembly	1	NI	1735223	Spray Paint (White)	
29	1729462	Flat Washer	4	NI	1735222	Spray Paint (Black)	
30	• 1186389	Fl. Nut 1/4-20	4	NI	1736796	Spray Paint (Dark Green)	
31	1740874	Spacer	1				
32	• 1186329	Flange Lock Screw 5/16-18 x 3/4	2				

•Common Hardware - Purchase Locally (Grade 5 where applicable)

(1) Serial Number 0100101 thru 0199999

(2) Serial Number 0200101 thru 0299999

BOLENS 17 HP TRACTOR

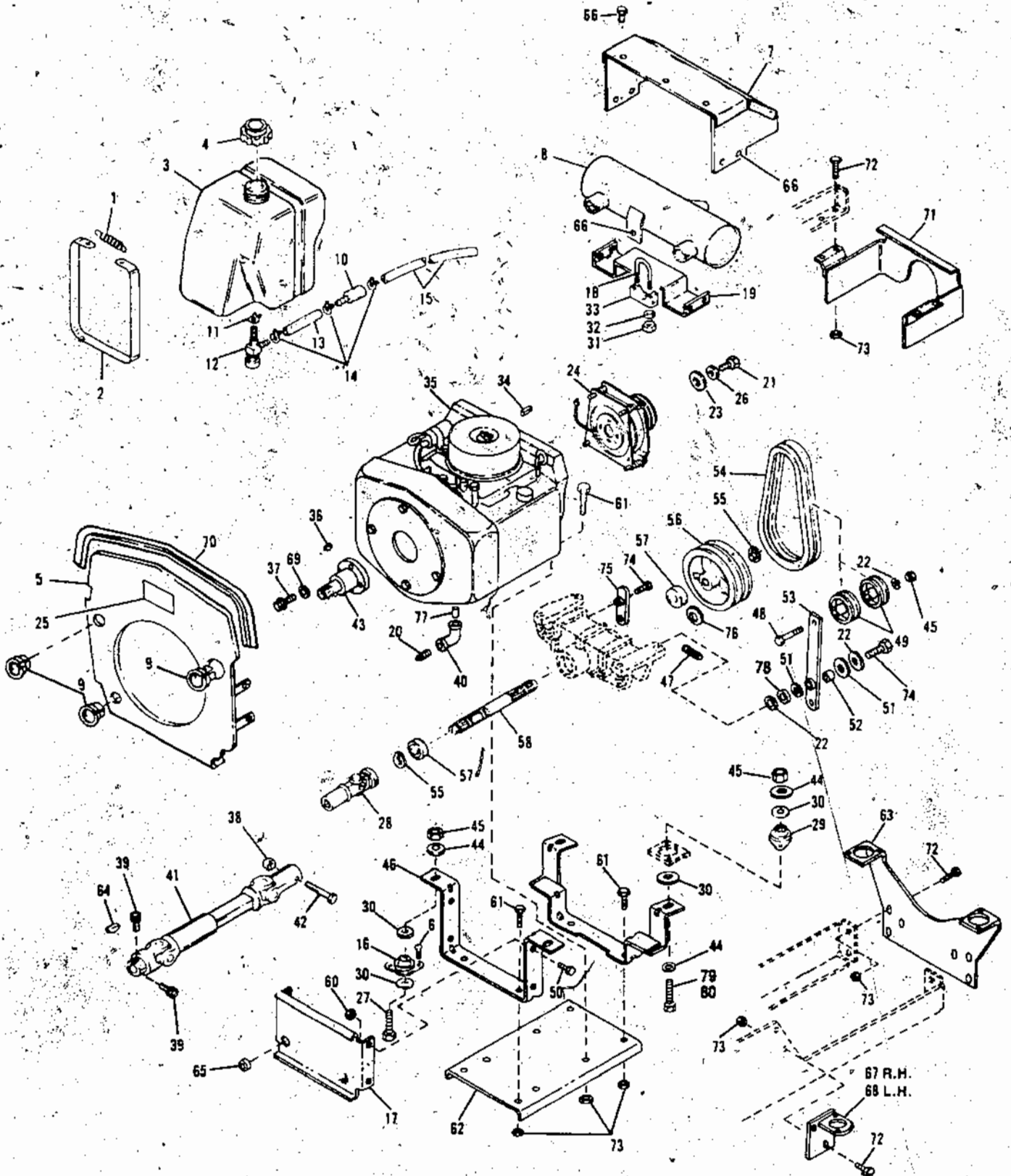


Figure 2. ENGINE AND DRIVE ASSEMBLY

4

A-5

REF. NO.	PART NO.	DESCRIPTION	NO. REQ'D.	REF. NO.	PART NO.	DESCRIPTION	NO. REQ'D.
1	1806648	Spring	1	42	1100807	Capscrew, 1/4-20 x 2	1
2	1727918	Strap	1	43	1736100	Drive Shaft	1
3	1735065	Fuel Tank (Incl. Ref. No. 4)	1	44	1701055	Flat Washer 3/8	6
4	1725868	Fuel Tank Cap	1	45	1733398	Hex Locknut, 3/8-16	5
5	1742610	Shield Assembly - Heat	1	46	1745911	Rear Mount Support	1
6	1185712	Screw Thd. Cutting No. 10-24 x 1/2	8	47	1724822	Extension Spring	1
7	1744409	Shield Assembly - Heat	1	48	1100062	Hex Screw, 3/8-16 x 2-1/2	1
8	1744414	Muffler	1	49	1727978	Idler Pulley	2
9	1729587	Snap Bushing	3	50	1186310	Flange Screw 1/4-20 x 3/4	4
10	1727491	Fuel Line Filter	1	51	1725069	Nylon Washer	2
11	1723474	Hose Clamp	1	52	1733359	Spacer	1
12	1718029	Shut Off Valve	1	53	1744449	Idler Arm Assembly	1
13	1724942	Fuel Line	1	54	1742628	PTO Belt (Matched Set of 2)	1
14	1718185	Hose Clamp	4	55	1185689	Snap Ring	2
15	1734941	Fuel Line	1	56	1744379	PTO Sheave	1
16	1725856	Rear Mount	2	57	1725087	Ball Double Seal Bearing	2
17	1746357	Grass Shield	1	58	1742634	PTO Shaft	1
18	1736160	"U" Bolt, 5/16-18	2	59	1745908	Front Mount Support	1
19	1736348	Shield Assembly - Heat	1	60	1186389	Flange Nut 1/4-20	4
20	1105678	Plug, Sq. Hd. Pipe (Drain)	1	61	1186347	Flange Screw 3/8-16 x 1	8
21	1736485	Capscrew, 7/16-20 x 1-1/4	1	62	1744408	Engine Mount	1
22	1713233	Washer	2	63	1745907	Engine Support	1
23	1741801	Washer	1	64	1104436	Woodruff Key, 3/16 x 5/8	1
24	1744401	Clutch Assembly	1	65	1746411	Bushing	1
25	1736298	Decal (Hot Surface)	1	66	1186308	Flange Lock Capscrew, 1/4-20 x 1/2	12
26	1100244	Lockwasher, 7/16	1	67	1745912	Hanger Assembly R.H.	1
27	1100049	Hex Screw 3/8-16 x 2-1/4	2	68	1745914	Hanger Assembly L.H.	1
28	1724836	Universal Joint Assembly	1	69	1100243	Lock Washer 3/8	4
29	1724896	Front Mount (1)	2	70	1740344	Heat Shield Gasket	1
	1738010	Front Mount (2)	2	71	1745145	PTO Guard Assembly (1)	1
30	1186047	Flat Washer 3/8 x 1-3/8	AR		1749172	PTO Guard Assembly (2)	2
31	1186230	Nut, 5/16-18	4	72	1186345	Flange Hd. Screw 3/8-16 x 3/4	10
32	1100242	Lockwasher, 5/16	4			Flange Hd. Nut 3/8-16	18
33	1719694	Saddle Clamp	2	73	1186393	Hex Hd. Screw 5/16-18 x 1	2
34	1708034	Key, 1/4 x 1/4 x 1/2	1	74	1186331	Anchor Spring	1
35		Kohler Engine, 17 HP (Model KT17QS-24218)	1	75	1744451	Flat Washer	AR
36	1100276	Woodruff Key, 1/4 x 7/8	1	76	1703073	Nipple	1
37	1100046	Cap Screw, 3/8-16 x 1	4	77	1730023	Flat Washer	AR
38	1110106	Locknut, 1/4-20	1	78	1709224	Nipple	1
39	1185596	Set Screw, 5/16-18 x 5/16	2	79	1100049	Hex Screw 3/8-16 x 2-1/4 (1)	2
40	1730022	Pipe Nipple	1	80	1110644	Hex Screw 3/8-16 x 3-1/4 (2)	2
41	1745940	Drive Shaft	1				

•Common Hardware - Purchase Locally (Grade 5 where applicable)
 *Order Parts From Your Authorized Kohler Engine Dealer

(1) Serial Number 0100101 thru 0199999
 (2) Serial Number 0200101 thru 0299999

BOLENS 17 HP TRACTOR

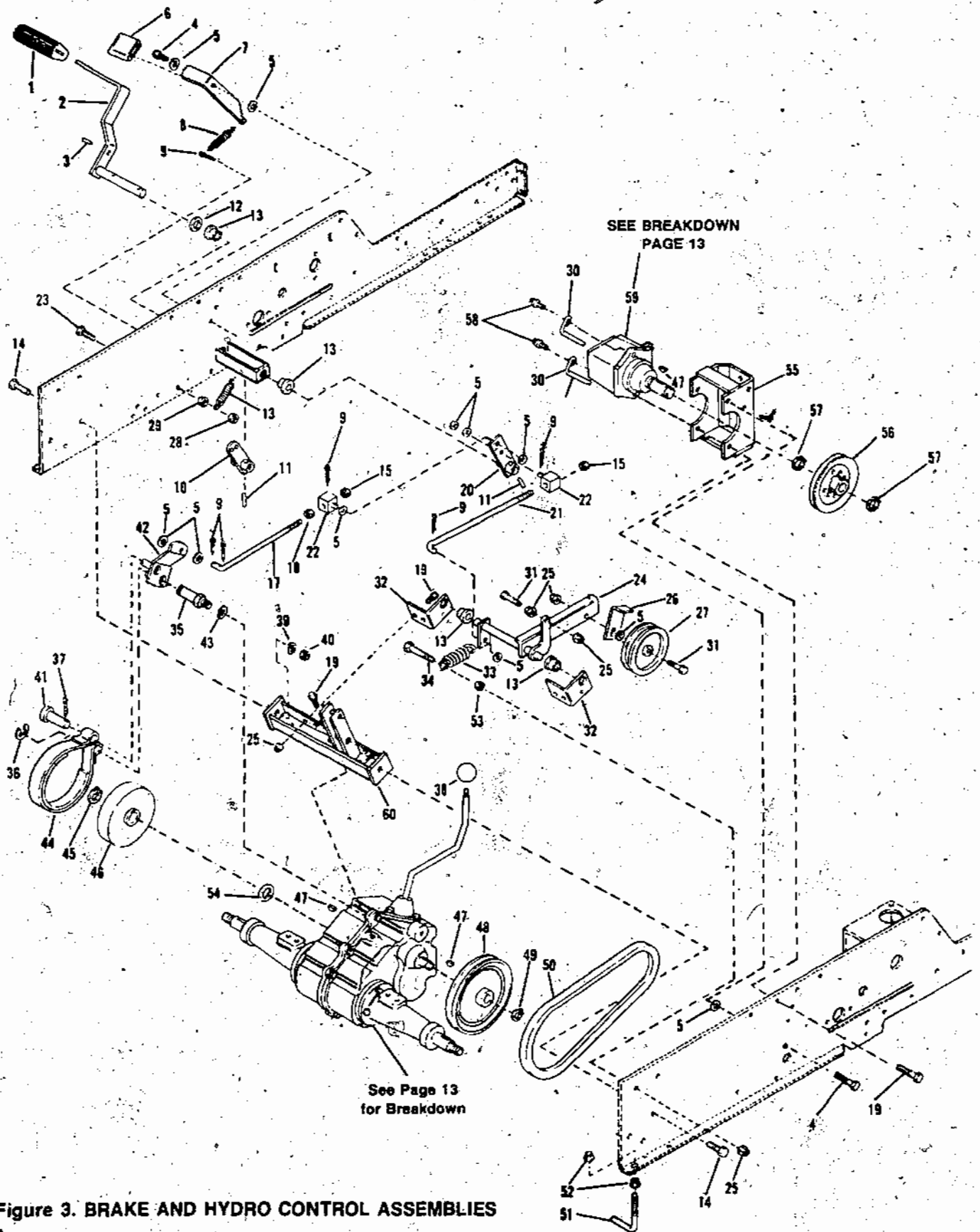


Figure 3. BRAKE AND HYDRO CONTROL ASSEMBLIES

6

REF. NO.	PART NO.	DESCRIPTION	NO. REQ'D	REF. NO.	PART NO.	DESCRIPTION	NO. REQ'D
1	1728694	Rubber Foot Rest	1	31	• 1186349	Flange Screw, 3/8-16 x 1-1/2	2
2	1744795	L.H. Pedal Assy	1	32	1733776	Idler Arm Support	2
3	1120209	Roll Pin, 3/16 x 3/4	1	33	1706822	Spring	1
4	• 1186347	Screw Flange, 3/8-16 x 1	1	34	• 1100062	Hex Screw, 3/8-16 x 2-1/2	1
5	• 1107383	Flat Washer, 3/8	24	35	1739889	Shoulder Bolt	1
6	1728696	Handle Grip	1	36	1177567	Retaining Ring	1
7	1729683	Brake Lock	1	37	• 1100351	Cotter Pin 1/8 x 1-1/4	1
8	1726640	Spring	1	38	1733871	Knob	1
9	• 1100346	Cotter Pin, 3/32 x 3/4	6	39	• 1100245	Lock Washer, 1/2	2
10	1746196	Control Arm Ass'y (1)	1	40	• 1186233	Hex Nut, 1/2-13	2
	1748584	Control Arm Ass'y (2)	1	41	1724839	Clevis Pin	1
11	1732147	Drive Pin	2	42	1744837	Brake Arm Assy	1
12	1727888	Spacer	1	43	• 1100243	Lock Washer 3/8	1
13	1185802	Bushing	4	44	1733735	Brake Band Assy	1
14	• 1100064	Screw, Hex, 1/2-13 x 1-1/2	2	45	1118554	Retaining Ring, 1"	1
15	1733398	Top Lock Nut, 3/8-16	3	46	1734741	Brake Drum Assy	1
16	1720612	Spring	1	47	1104436	Key, Woodruff, 3/16 x 3/4	3
17	1744813	Brake Rod	1	48	1744799	Pulley	1
18	• 1110108	Lock Nut, 3/8-16	1	49	1113527	Retaining Ring, 3/4	1
19	• 1186345	Flange Screw, 3/8-16 x 3/4	5	50	1742629	V Belt (H.B. 48.4")	1
20	1748198	Control Arm Assy	1	51	1728286	Belt Guide	2
21	1744814	Clutch Rod	1	52	• 1186391	Flange Nut, 5/16-18	4
22	1734556	Pivot Block	2	53	• 1186259	Nut, Jam, 3/8-16	1
23	• 1186312	Hex Screw, 1/4-20 x 1	1	54	1186457	Thrust Washer	1
24	1744802	Idler Shaft Assy	1	55	1745473	Support, Gear Box	1
25	• 1186393	Flange Nut, 3/8-16	11	56	1744798	Pulley	1
26	1734835	Belt Guide	1	57	1180025	Retaining Ring, 7/8	1
27	1728810	Idler	1	58	• 1186348	Screw, Flange, 3/8-16 x 1-1/4	1
28	1734398	Lock Nut 1/4-20	1	59		Gear Box Assembly	1
29	• 1186389	Flange Hd. Screw 1/4-20	1	60	1744800	Transaxle Support	1
30	1748525	Belt Guide	1				

• Common Hardware - Purchase Locally (Grade 5 where applicable)

*See Breakdown page 14.

(1) Serial Number 0100101 thru 0199999

(2) Serial Number 0200101 thru 0299999

BOLENS 17 HP TRACTOR

Serial No.
0100101 thru
0199999

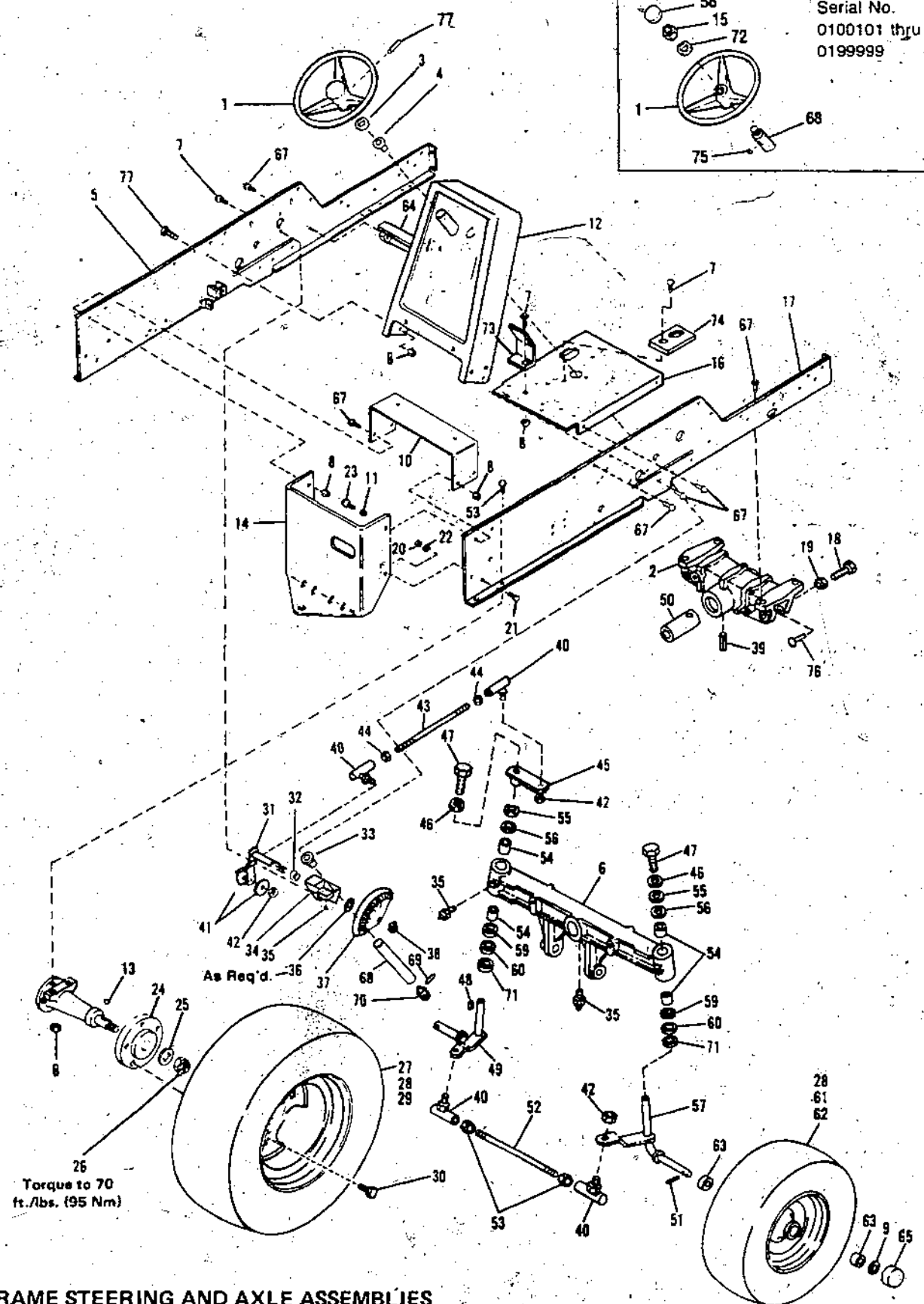
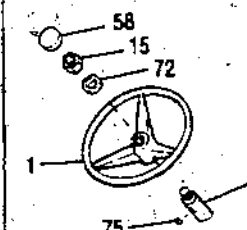


Figure 4. FRAME STEERING AND AXLE ASSEMBLIES

MODEL 5017G

REF. NO.	PART NO.	DESCRIPTION	NO. REQ'D.	REF. NO.	PART NO.	DESCRIPTION	NO. REQ'D.
1	1736980	Wheel, Steering (1)	1	36	1733442	Washer, Shim	AR
	1747804	Wheel, Steering (2)	1	37	1740096	Gear, Steering	1
2	1744350	Bolster	1	38	1185649	Ring, Retaining	1
3	1708012	Washer, Flat	2	39	1733103	Roll Pin 5/16 x 3/4	1
4	1723994	Bearing, Steering	1	40	1713361	Joint, Ball	4
5	1744779	Frame Assembly, L.H. (1)	1	41	1738490	Spacer	2
	1749631	Frame Assembly, L.H. (2)	1	42	1110152	Nut, Hex Lock - 1/2-20	4
6	1744346	Front Axle	1	43	1744373	Rod, Steering	1
7	1186345	Screw, Hex Hd. Flange Lock 3/8-16 x 3/4	4	44	1186247	Hex Nut 1/2-20	2
8	1186393	Nut, Flange Lock - 3/8-16	12	45	1744369	Arm Assembly, Steering	1
9	1715491	Thrust Washer	2	46	1186033	Flat Washer 5/16	2
10	1744807	Support, Seat (1)	1	47	1186329	Flange Screw 5/16-18 x 3/4	2
	1747807	Support, Seat (2)	1	48	1186034	Woodruff Key 1/4 x 7/8	1
11	1186259	Jam Nut 3/8-16	1	49	1744364	Spindle Assembly L.H. Wheel	1
12	1742099	Panel Assembly, Inst. (1)	1	50	1744374	Tube Pivot	1
	1748704	Panel Assembly, Inst. (2)	1	51	1104222	Cotter Pin 3/16 x 1-1/2	2
13	1100281	Woodruff Key 5/16 x 1-1/8	1	52	1746138	Rod, Tie	1
14	1744808	Rear Panel	1	53	1186349	Fl. Screw 3/8-16 x 1-1/4	4
15	1110108	Nut, Lock - 3/8-16 (1)	1	54	1187181	Flange Bearing	4
16	1745923	Support Assembly, Battery & Gas Tank (1)	1	55	1177395	O-Ring	2
	1749849	Support Assembly, Battery & Gas Tank (2)	1	56	1706873	Thrust Washer	2
17	1744849	Frame Assembly, R.H. (1)	1	57	1744367	Spindle Assembly R.H. Wheel	1
	1749606	Frame Assembly, R.H. (2)	1	58	1737071	Steering Cap (1)	1
18	1100045	Hex Hd. Screw 5/16-18 x 1	2	59	1185815	Thrust Washer	2
19	1186258	Jam Nut 5/16-18	1	60	1185729	Thrust Race	2
20	1186233	Hex Nut 1/2-13	4	61	1744372	Wheel Assembly	2
21	1100064	Screw Hex Hd. - 1/2-13 x 1-1/2	4	62	1732927	Tire, 16 x 6.50-8	2
22	1100245	Washer, Lock - 1/2	4	63	1744375	Bearing, Ball	2
23	1100062	Hex Hd. Screw 3/8-16 x 1-1/2	1	64	1735572	Frame Support	1
24	1726679	Hub, Wheel	2	65	1744396	Cap, Dust	2
25	1708599	Spacer	2	66	1185985	Keps Nut No. 10-24	1
26	1120390	Nut, Hex - 3/4-10	2	67	1186347	Flange Screw 3/8-16 x 1	16
27	1724718	Wheel Assembly	2	68	1742627	Steering Shaft Ass'y (1)	1
28	1718086	Valve	4		1738414	Steering Shaft Ass'y (2)	1
29	1732926	Tire, 23 x 10.50 x 12	2	69	1738413	Roll Pin	1
30	0101085	Bolt, Hub	10	70	1736159	Bevel Pinion Gear	1
31	1731782	Arm Assembly, Steering	1	71	1727686	Thrust Race	2
32	1733707	Spacer, Tubular	1	72	1107383	Flat Washer 3/8 (1)	1
33	1185846	Bushing, Flange	1	73	1746621	Tank Clamp	1
34	1740753	Bracket, Steering Support	1	74	1746622	Cover	1
35	1185976	Fitting, Grease Thd. Forming	2	75	1104436	Woodruff Key 3/16 x 3/4 (1)	1
				76	1745892	Weld Pin	2
				77	1185279	Roll Pin (2)	1

*Common Hardware - Purchase Locally (Grade 5 where applicable)

(1) Serial Number 0100101 thru 0199999

(2) Serial Number 0200101 thru 0299999

BOLENS 17 HP TRACTOR

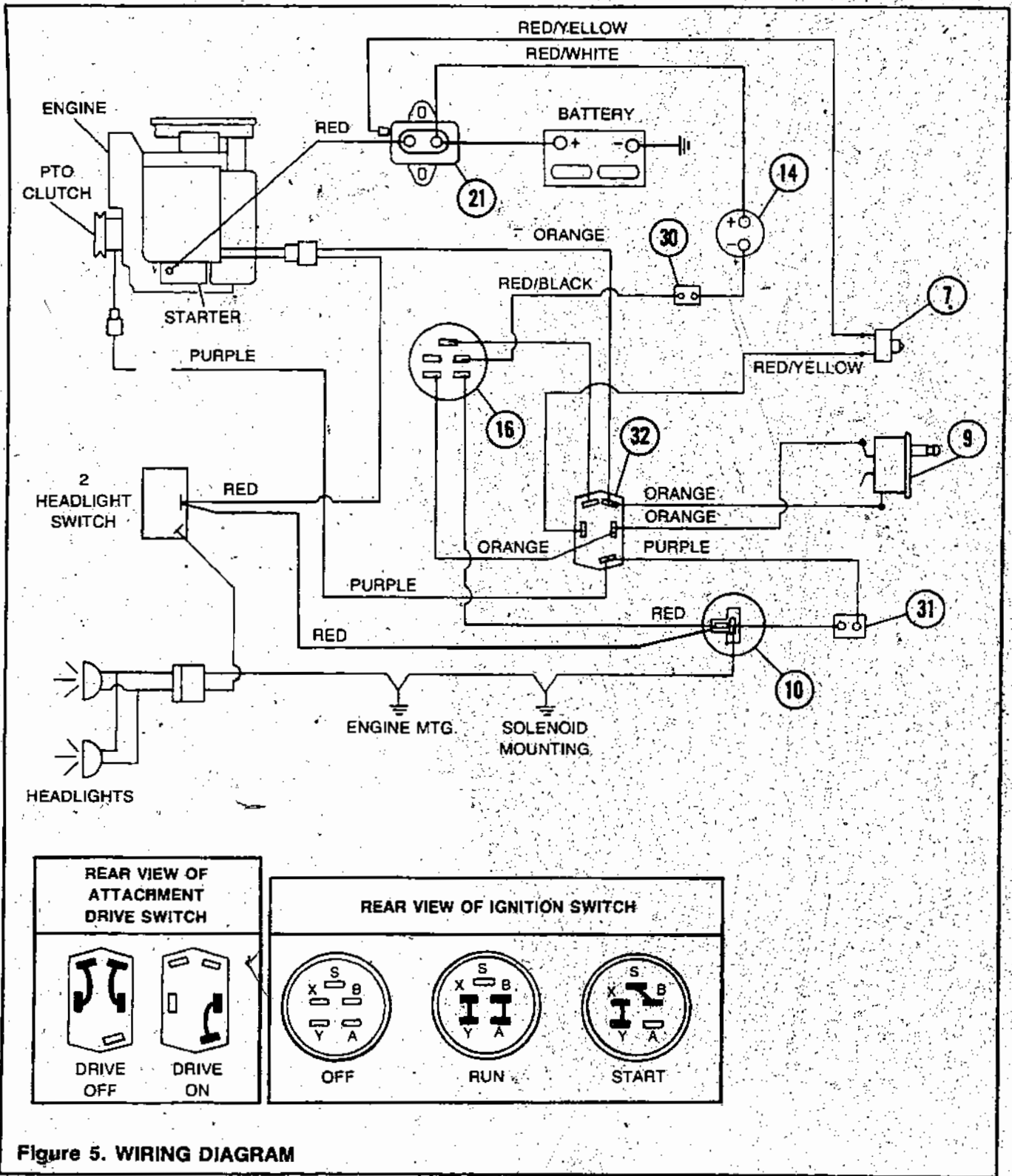
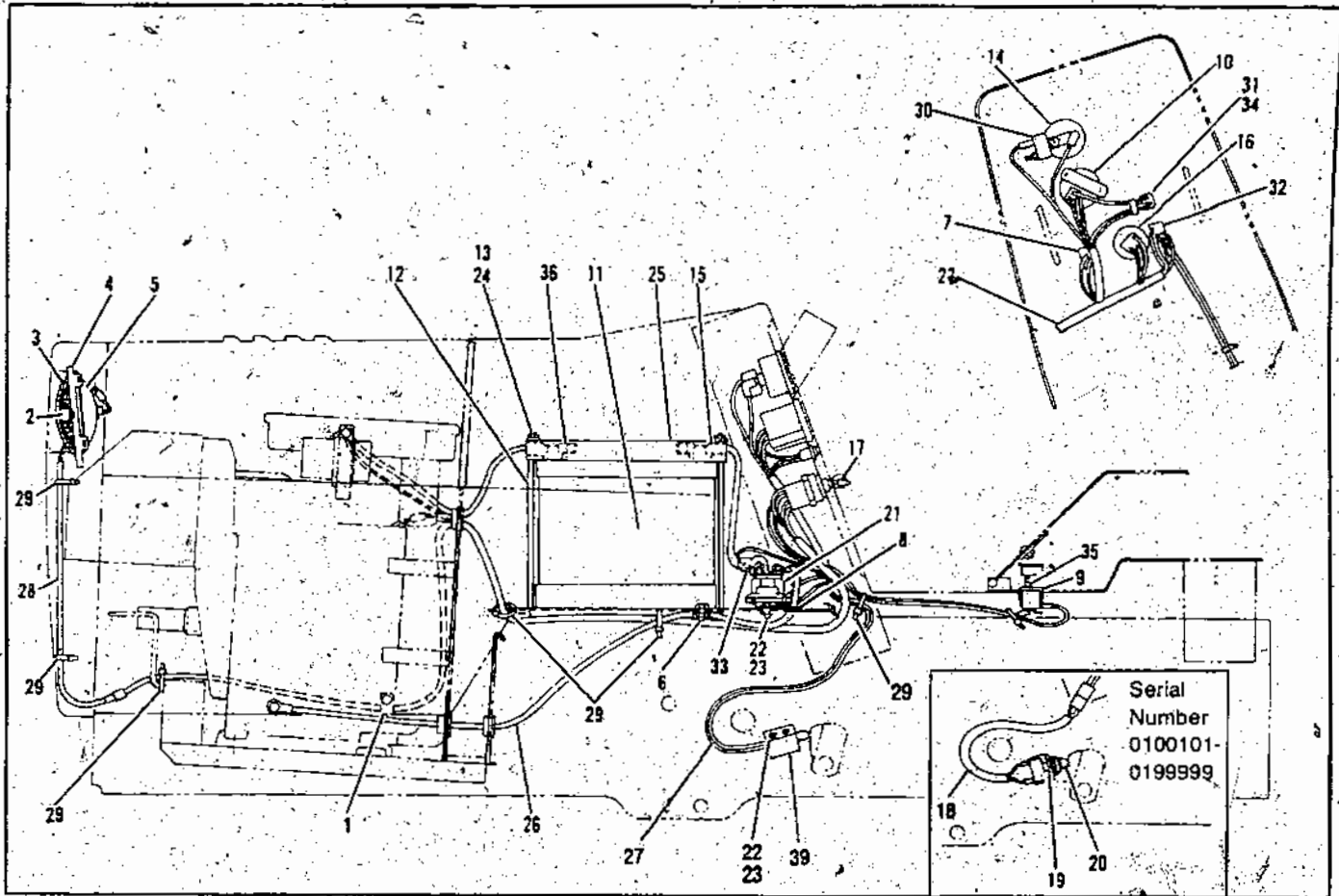


Figure 5. WIRING DIAGRAM



REF. NO.	PART NO.	DESCRIPTION	NO. REQ'D.	REF. NO.	PART NO.	DESCRIPTION	NO. REQ'D.
1	1721252	J-Clip	1	21	1740056	Solenoid	1
2	1727379	Rivet, Pop 3/16 x 3/8	4	22	1115815	Screw, Phil. No. 10-24 x 5/8	4
3	1726435	Headlight	2	23	1185985	Nut, Keps Lock No. 10-24	4
4	1806805	Plate, Retainer	2	24	1734398	Locknut 1/2-20	2
5	1806808	Retainer	2	25	1739631	Battery Hold Down	1
6	1737732	Wire Clamp	1	26	1732581	Cable, Starter	1
7	1724894	Switch	1	27	1745873	Harness Main (1)	1
8	1721487	Grommet (1)	1		1749609	Harness Main (2)	1
	1748719	Grommet (2)	1	28	1727169	Harness Headlight	1
9	1734366	Switch	1	29	1805345	Cable, Tie	11
10	1742197	Hour Meter (1)	1	30	1729914	Circuit Breaker	1
	1748719	Hour Meter (2)	7	31	1734824	Lamp, Clutch	1
11	1740009	Battery, 12 Volt	1	32	1725098	Switch PTO	1
12	1740804	Hold Down Rod	1	33	1715012	Electrical Nipple	1
13	1107381	Flat Washer 1/4	2	34	1735285	Bulb (Mfg. No. GE 73)	1
14	1739205	Ammeter 20-0-20	1	35	1734472	Switch Seal	1
15	1746199	Cable, Battery Pos.	1	36	1725373	Cable, Battery Neg. to Engine Mount	1
16	1721409	Switch, Ignition	1	37	1186393	Flange Nut 3/8-16	1
17	1718266	Key, Ignition	1	38	1186345	Flange Screw 3/8-16 x 3/4	1
18	1733577	Switch Assembly, Interlock	1	39	1748723	Switch (2)	1
19	1890234	Washer	2				
20	1733576	Seal, Switch	1				

•Common Hardware - Purchase Locally (Grade 5 where applicable)

(1) Serial Number 0100101 thru 0199999

(2) Serial Number 0200101 thru 0299999

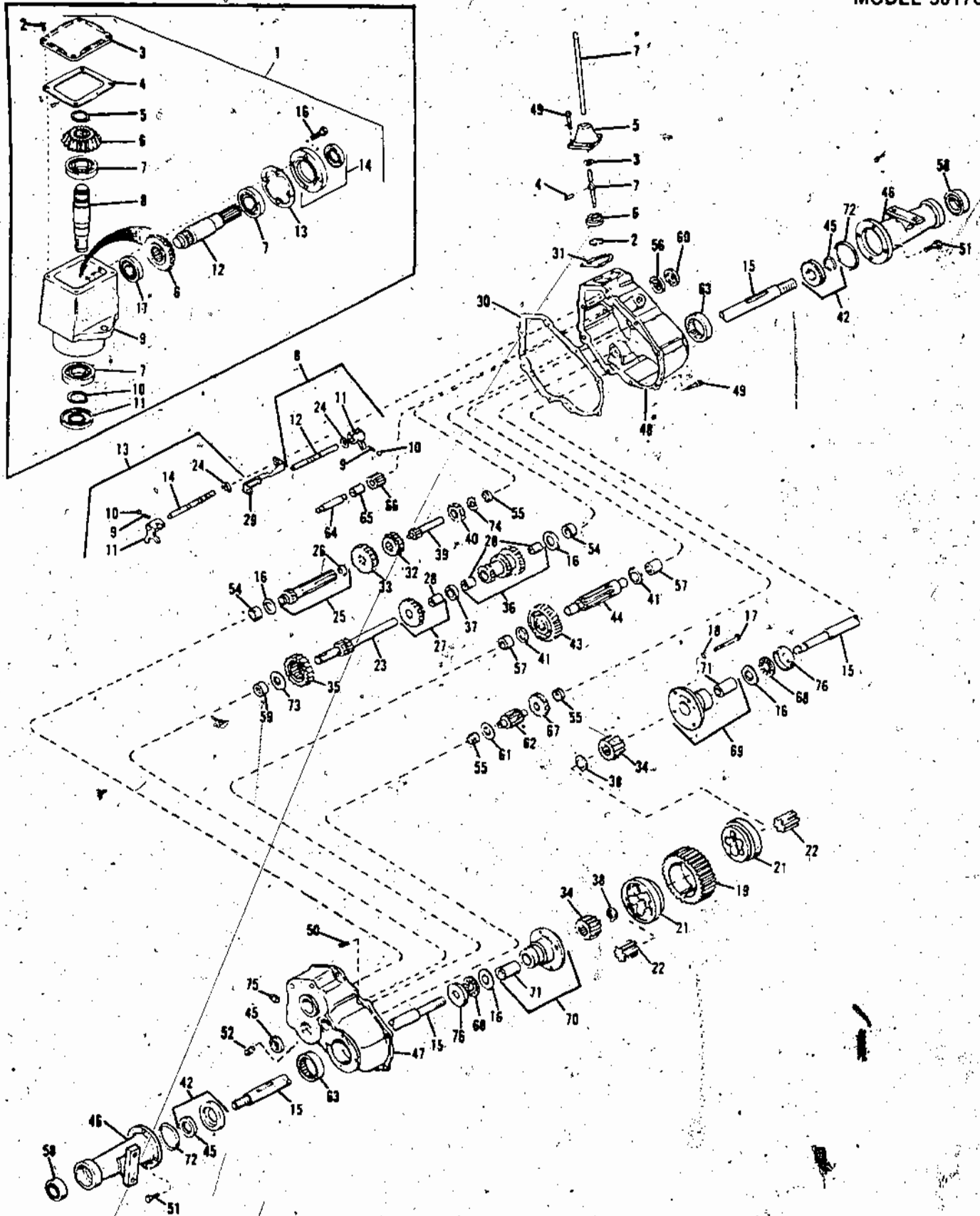
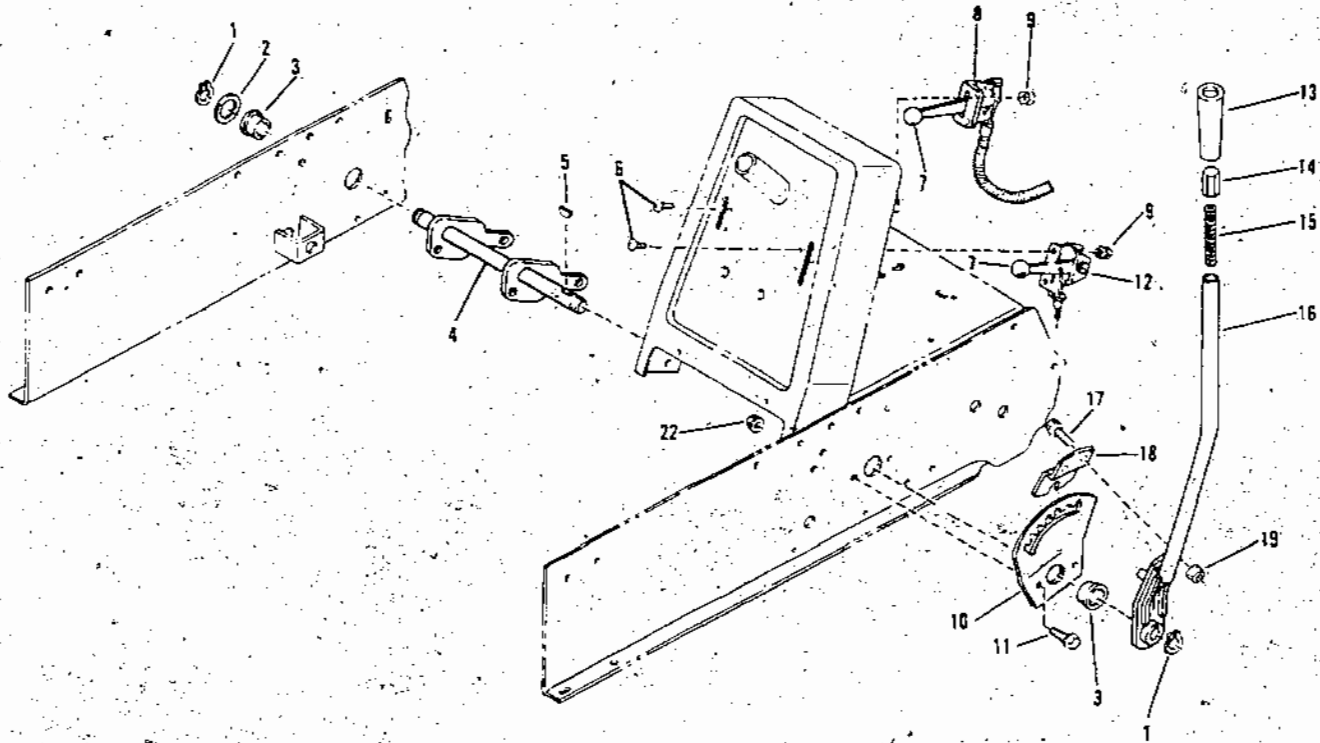


Figure 8. PEERLESS TRANSAXLE ASSEMBLY MODEL 2355 (794-305)
 ANGLE GEAR BOX ASSEMBLY (MODEL 3890-P91)

ORDER PARTS FROM TECUMSEH, LAUSON-POWER PRODUCTS

REF. NO.	PART NO.	DESCRIPTION	NO. REQ'D.	REF. NO.	PART NO.	DESCRIPTION	NO. REQ'D.
PEERLESS TRANSAXLE ASSEMBLY							
2	792016	Ring, Snap		49	792007	Screw, Socket Hd. Cap. 1/4-20 x 3/4	
3	792001	Ring, Quad		50	786026	Pin, Dowel	
4	792049	Pin, Drive		51	790237	Screw, hex Hd. 5/16-18 x 7/8	
5	794093	Housing, Shift Lever		52	792019	Plug, Magnetic Drain	
6	784094	Keeper, Shift Lever		54	780049	Bearing, Needle	
7	784297	Lever, Shift		55	530105	Bearing, Needle	
8	784054	Rod Assy., Shift (Incl. Nos. 9 thru 12 & 24)		56	780024	Bearing, Ball	
9	792003	Spring		57	780047	Bearing, Needle	
10	792004	Ball, Steel		58	780050	Bearing, Ball	
11	784004	Fork, Shifter		59	780046	Bearing, Needle	
12	784055	Rod, Shifter (3rd & 4th)		60	788025	Seal, Oil	
13	784056	Rod Assy., Shift (Incl. Nos. 9 thru 11 & 14)		61	780001	Washer	
14	784057	Rod, Shifter (Low)		62	776031	Shaft & Pinion	
15	774498	Axle		63	780048	Bearing, Needle	
16	780042	Washer, Thrust		64	776030	Shaft, Reverse Idler	
17	792056	Screw, Hex Hd, Cap. 1/4-20 x 3-1/4		65	786025	Spacer, Reverse Idler	
18	792006	Lockwasher, 1/4		66	778051	Idler, Reverse	
19	778080	Gear, Ring		67	778038	Spur, Gear (22 Teeth)	
21	786052	Core, Body		68	780039	Bearing, Thrust	
22	778078	Gear, Pinion		69	774141	Carrier Assy., Differential (Incl. No. 71)	
23	776029A	Shaft & Gear, Brake		70	774142	Carrier Assy., Differential (Incl. No. 71)	
24	792017	Ring, Snap		71	780041	Bushing	
25	776189A	Shaft & Bearing Assy. Pinion (Incl. No. 26)		72	788024	"O" Ring	
26	780018	Bearing		73	780007	Washer, Thrust	
27	778034	Gear Cluster Assy. (Incl. No. 28)		74	780051	Washer, Thrust	
28	780053	Bushing		75	792010	Plug, Pipe	
29	784074	Stop, Shifter		76	780075	Race, Thrust	
30	788023	Gasket, Case & Cover		MODEL 3890-P91			
31	788022	Gasket, Shift Lever Housing		RIGHT ANGLE GEAR BOX REPLACEMENT NO. 794251			
32	778050	Gear, Shifting (3rd & 4th)		1	794305	Head Assy., Left Hand (Incl. Nos. 2 thru 16)	1
33	778020	Gear, Shifting (1st & 2nd & Rev.)		2	792025	Screw, Rd. Hd. Self-Tap 10-24 x 1/2	4
34	778079	Gear, Side		3	772035	Cover	1
35	778037	Gear, Idler		4	788028	Gasket, Cover	1
36	778049	Gear Cluster Assy. (Incl. No. 28)		5	788018	Ring, Snap	1
37	786024	Spacer		6	778046	Gear, Miter	2
38	792018	Ring, Snap		7	780034	Bearing, Ball	2
39	776015A	Shaft, Input		8	776186	Shaft, Output	1
40	778024A	Spur Gear, Input Shaft		9	770026	Housing, Right Angle Drive	1
41	790052	Washer, Thrust		10	788019	Ring, Snap	1
42	788021	Seal & Retainer Assy. Oil (Incl. No. 45)		11	788029	Seal, Oil	1
43	778036	Gear, Output		12	776125	Shaft, Input	1
44	776028	Pinion, Output		13	788030	Gasket, Cap	1
45	788008	Seal, Oil		14	788029	Cap & Seal Assy. Retainer (Incl. Nos. 92, 93)	1
46	782062	Housing, Axle		15	788031	Seal, Oil	1
47	772076	Cover Assy., Transaxle Incl. Nos. 54, 55, 57, 59 & 63)		16	792026	Screw, Hex Hd. 1/4-20 x 7/8	1
48	770068	Case Assy., Transaxle (Incl. Nos. 54, 55, 57		17	780024	Bearing, Ball	1

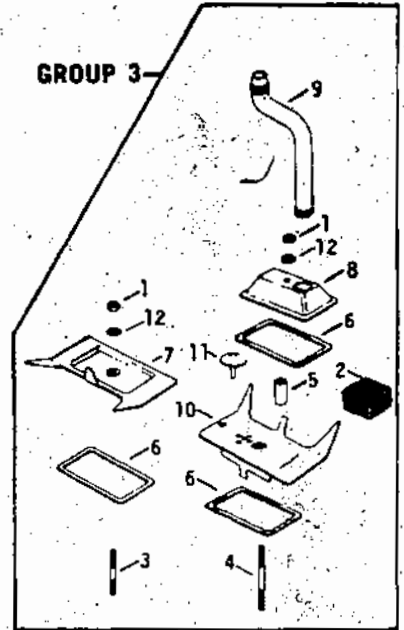
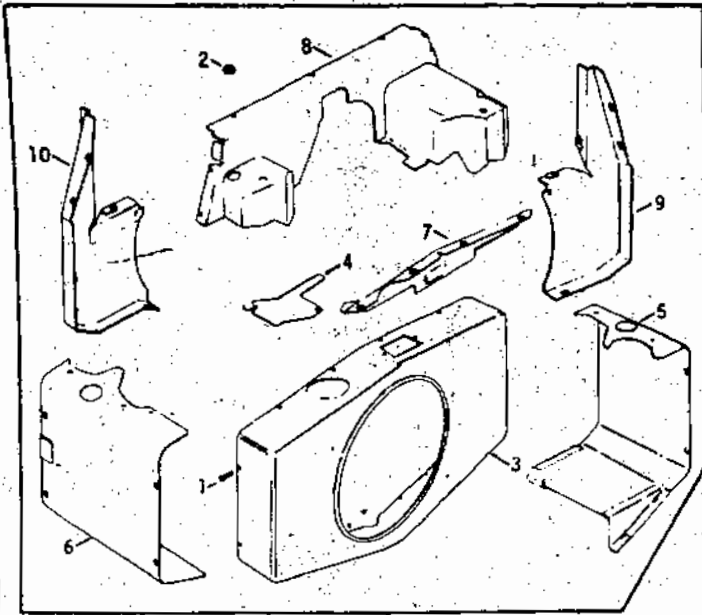
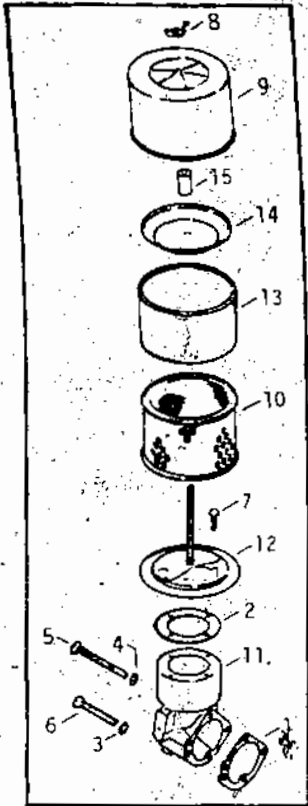
BOLENS 17 HP TRACTOR



REF. NO.	PART NO.	DESCRIPTION	NO. REQ'D.	REF. NO.	PART NO.	DESCRIPTION	NO. REQ'D.
1	1118554	Retaining ring	2	12	1734523	Control, Throttle	1
2	1185816	Shim	A/R	13	1730754	Grip	1
3	1185728	Flange Bearing	2	14	1714644	Plunger	1
4	1744806	Shaft, Lift	1	15	1713075	Spring	1
5	1100279	Key, Woodruff, 1/4 X 1	1	16	1734768	Handle, Lift	1
6	• 1115815	Machine Screw, No. 10-24 X 5/8	4	17	• 1186329	Screw, Flange Lock, 5/16-18 X 3/4	2
7	1724527	Knob Only	2	18	1726401	Bracket	1
8	1736465	Control, Choke	1	19	• 1186391	Flange Lock Nut, 5/16-18	2
9	1185985	Keps-Nut, No. 10-24	4	20	• 1186345	Screw, Flange Lock, 3/8-16 X 3/4	2
10	1734262	Quadrant	1				
11	• 1186393	Flange Lock Nut, 3/8-16	2				

• Common Hardware - Purchase Locally (Grade 5 where applicable)

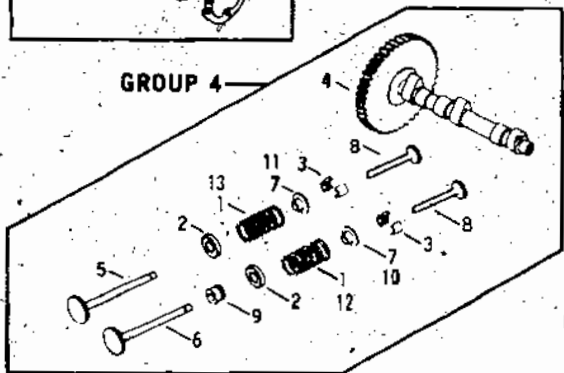
Figure 6. HAND CONTROLS AND LIFT ASSEMBLY



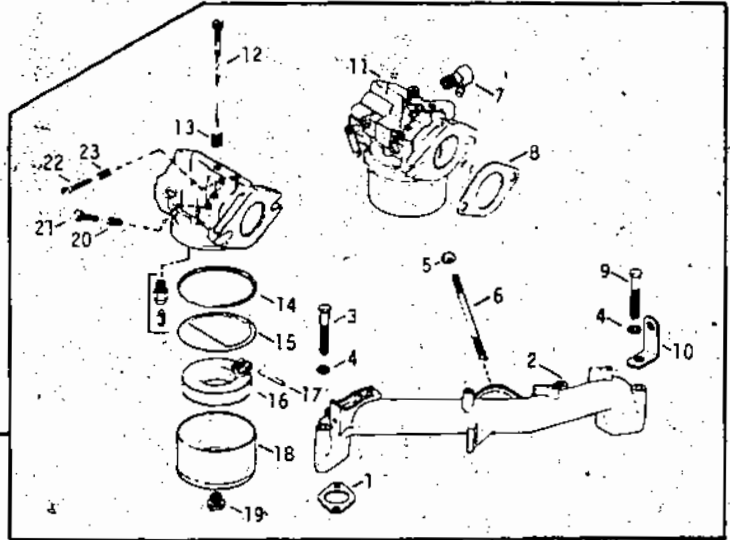
GROUP 1

GROUP 2

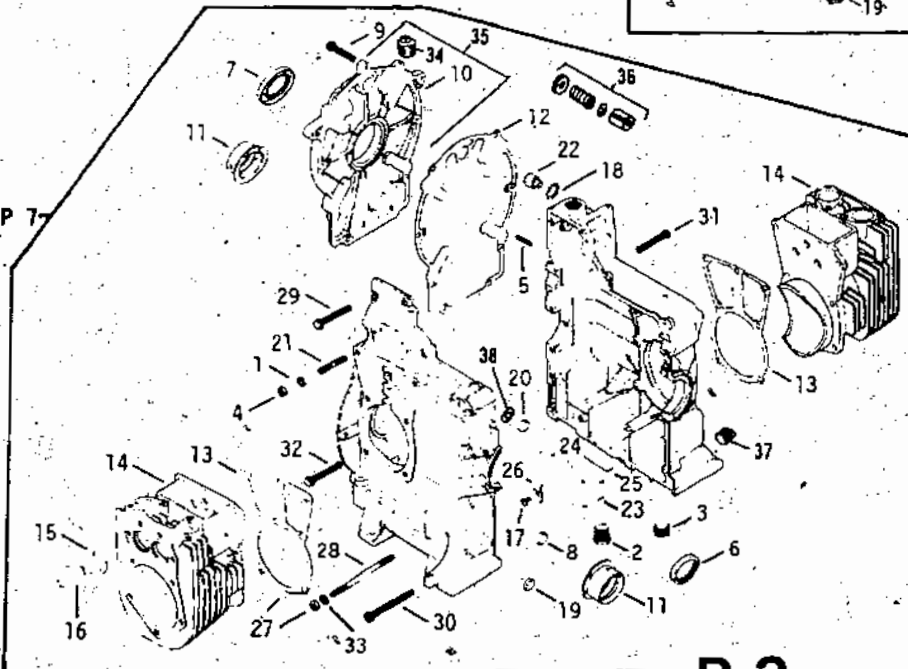
GROUP 4



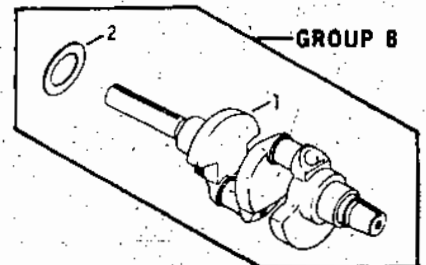
GROUP 5



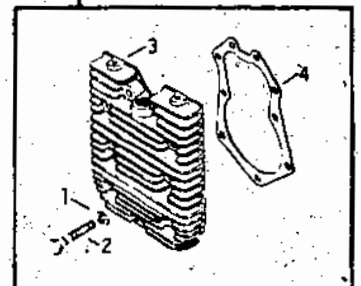
GROUP 7

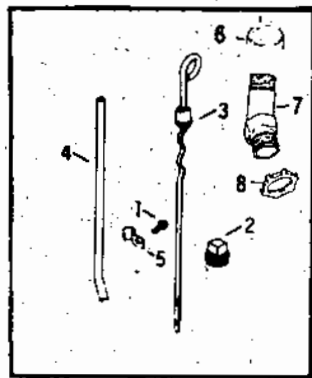


GROUP 8

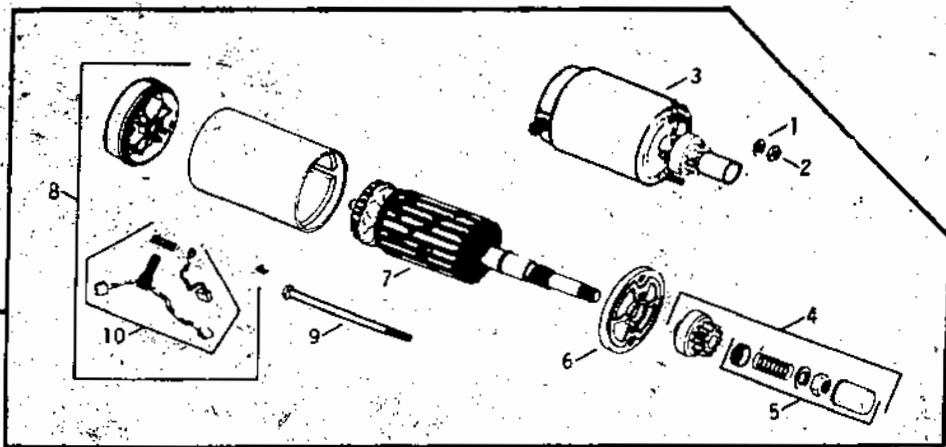


GROUP 9

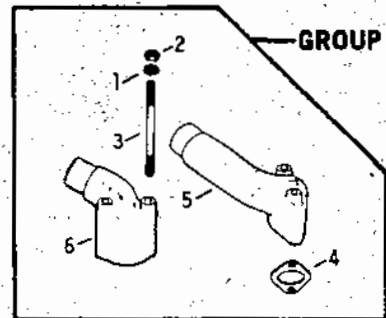




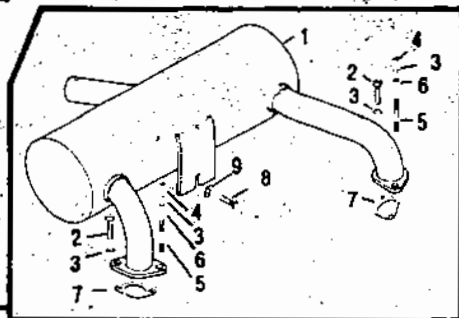
GROUP 10



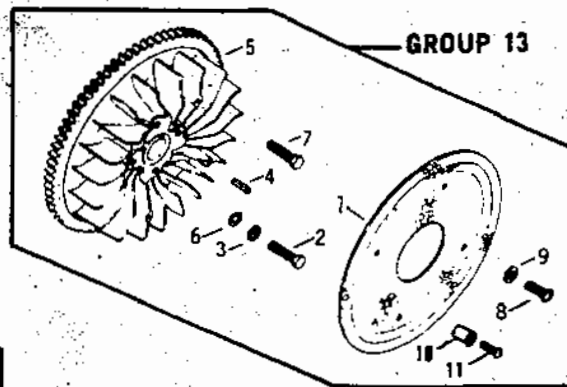
GROUP 11



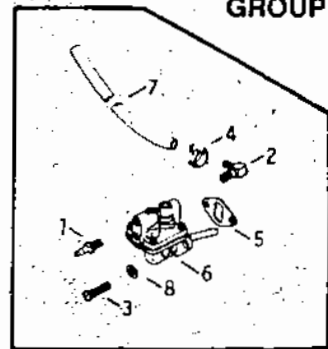
GROUP 12



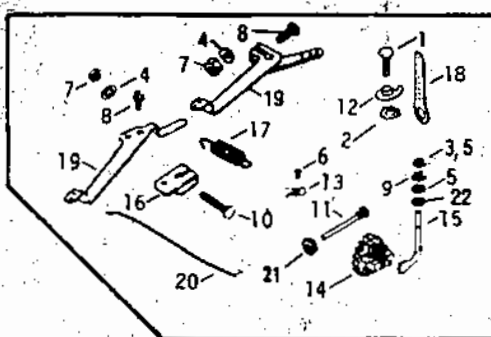
GROUP 12A



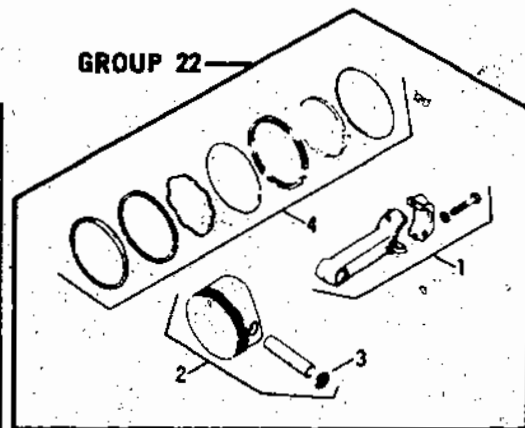
GROUP 13



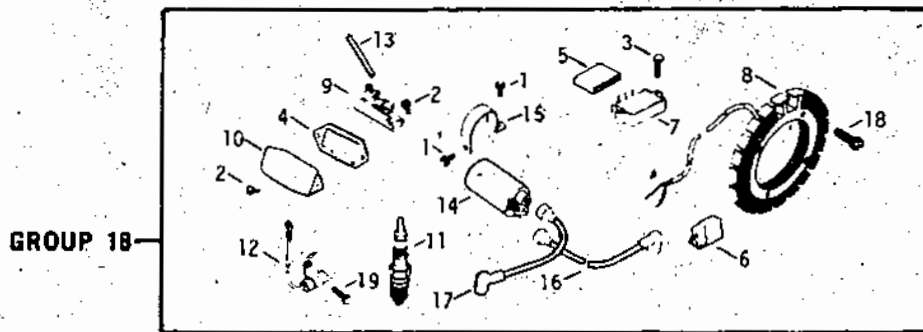
GROUP 14



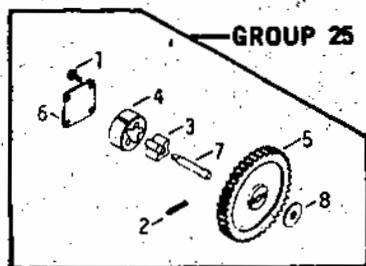
GROUP 17



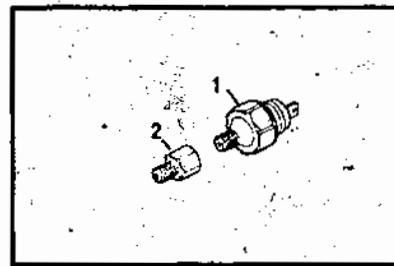
GROUP 22



GROUP 18



GROUP 25



GROUP 32

KOHLER ENGINE MODEL KT17QS
 ORDER ALL REPLACEMENT PARTS FROM
 YOUR NEAREST KOHLER ENGINE DEALER

ORDER PARTS FROM YOUR LOCAL KOHLER ENGINE DEALER

MODEL KT17QS

REF. NO.	KT17 24218	KT17 24314	KT17 24351	DESCRIPTION	REF. NO.	KT17 24218	KT17 24314	KT17 24351	DESCRIPTION
				AIR INTAKE - GROUP 1					
1	277069	277069	2770069	Elbow Gasket	8	271030	271030	271030	Carburetor Gasket
2	277093	277093	277093	Air Cleaner Gasket	9	X-6-54	X-6-54	X-6-54	H.C. Screw, 5/16-18 x 2-7/8 (2)
3	X-22-9	X-22-9	X-22-9	Washer No. 10 (2)	10	52 445 02	52 445 02	52 445 02	Lifting Strap (2)
4	X-25-79	X-25-79	X-25-79	Washer	11	52 053 09	52 053 09	52 053 09	Carburetor - Assembly
5	X-50-37	X-50-37	X-50-37	Screw 10-32 x 2-1/4	12	52 103 01	52 103 01	52 103 01	Main Fuel Adj. Screw
6	X-50-57	X-50-57	X-50-57	Screw 10-32 x 1-1/2 (2)	13	200383	200383	200383	Main Fuel Spring
7	X-67-98	X-67-98	X-67-98	H. Washer Hd. Screw (4)	14	200375	200375	200375	Bowl Gasket
8	X-276-7	X-276-7	X-276-7	Wing Nut 1/4-20	15	200439	25 041 02	25 041 02	Bowl Baffle Gasket
9	45 082 01	45 082 01	45 082 01	Air Cleaner Cover	16	25 757 03	25 757 03	25 757 03	Kit Float
10	45 083 02	45 083 02	45 083 02	Element	17	200376	200376	200376	Float Hinge Pin
11	52 054 15	52 054 15	52 054 15	Air Intake Elbow	18	235448	235448	235448	Fuel Bowl
12	52 094 06	52 094 06	52 094 06	Air Cleaner Base	19	47 100 06	47 100 06	47 100 06	Bowl Retainer Screw
13	52 083 02	45 083 01	45 083 01	Precleaner Element	20	200380	200380	200380	Idle Fuel Spring
14	52 082 04	52 082 04	52 082 04	Air Cleaner Element Cover	21	277210	277210	277210	Idle Fuel Adj. Screw
15	231032	231032	231032	Seal	22	232556	232556	232556	Idle Speed Adj. Screw
					23	232555	232555	232555	Idle Speed Spring
				BAFFLES & SHROUD - GROUP 2		221519	25 757 02	25 757 02	Carburetor Repair Kit
1	X-67-83	X-67-83	X-67-83	Screw 1/4-20 x 7/16 (28)	1	X-22-1	---	---	CRANKCASE - GROUP 7
2	X-82-2	X-82-2	X-82-2	Nuts 5/16-18 (2)	2	52 139 02	---	---	Washer (12)
3	52 027 09	52 027 09	52 027 09	Blower Housing	3	X-75-32	X-75-32	X-75-32	Bottom Drain Plug
4	52 063 01	52 063 01	52 063 01	Cylinder Top Baffle No. 2	4	X-83-2	52 100 03	52 100 03	Flush Plug
5	52 124 03	52 124 24	52 124 24	Cylinder Head Baffle No. 1	5	X-280-10	X-280-10	X-280-10	Nut (12)
6	52 124 02	52 124 02	52 124 02	Cylinder Head Baffle No. 2	6	52 032 10	52 032 10	52 032 10	Roll Pin
7	52 217 01	52 217 01	52 217 01	Upper Housing Support	7	X-583-5	X-583-5	X-583-5	Front Oil Seal
8	52 282 01	52 282 01	52 282 01	Air Duct Cover	8	X-702-5	X-702-15	X-702-15	Rear Oil Seal
9	52 281 08	52 281 08	52 281 08	No. 1 Side Air Duct	9	X-802-9	X-802-9	X-802-9	Cup Plug
10	52 281 09	52 281 09	52 281 09	No. 2 Side Air Duct	10	52 009 01	---	---	Washer Head Screw (9)
					11	52 030 02	52 030 10	52 030 10	Rear Closure Plate
				BREATHER & VENT - GROUP 3	12	52 041 08	52 041 08	52 041 08	Sleeve Bearing (2)
1	X-81-1	X-81-1	X-81-1	Hex Nut, 1/4-20 (2)	13	52 041 04	52 041 04	52 041 04	Rear Closure Plate Gasket
2	231419	231419	231419	Breather Filter	14	52 565 27	52 565 27	52 565 27	Cylinder Barrel Gasket (2)
3	X-352-39	X-352-39	X-352-39	Stud 1/4-20 x 2-1/4	15	230265	230265	230265	Cylinder Barrel (2)
4	275220	275220	275220	Stud 1/4-20 x 3-1/4	16	52 316 06	52 316 06	52 316 06	Valve Seat Insert (4)
5	52 032 04	52 032 04	52 032 04	Breather Seal	17	X-67-64	X-67-64	X-67-64	Valve Guide (4)
6	52 055 01	52 055 01	52 055 01	Cover Gasket (3)	18	X-269-43	X-269-43	X-269-43	Screw
7	52 096 02	52 096 18	52 096 18	No. 2 Cylinder Valve Cover	19	X-702-4	---	---	Retaining Ring
8	52 096 08	52 096 08	52 096 08	No. 1 Cylinder Valve Cover	20	X-702-15	52 139 08	52 139 08	Plug
9	52 326 05	52 326 05	52 326 05	Breather Hose	21	52 072 01	52 072 01	52 072 01	Stud (12)
10	52 755 09	52 755 09	52 755 09	Valve Cover Kit (Incl. No. 11)	22	52 078 02	52 078 02	52 078 02	Governor Shaft
11	52 462 01	52 462 01	52 462 01	Umbrella Valve	23	52 095 03	52 095 03	52 095 03	Housing Assembly
12	X-25-12	X-25-12	X-25-12	Plain Washer (2)	24	52 123 10	52 123 10	52 123 10	Oil Pick-Up Tube
					25	52 237 02	52 237 02	52 237 02	Clamp
				CAMSHAFT & VALVES - GROUP 4	26	52 237 04	52 237 04	52 237 04	Clamp
1	230010	230010	---	Valve Spring (4)	27	X-82-2	X-82-2	X-82-2	Nut (2)
2	230011	230011	52 018 01	Spring Retainer (4)	28	X-352-33	X-352-33	X-352-33	Stud (2)
3	41 755 10	41 755 10	41 755 10	Retainer Kit (4)	29	X-802-6	X-802-6	X-802-6	Screw (3)
4	52 010 01	52 012 06	52 012 06	Camshaft	30	X-802-7	X-802-7	X-802-7	Screw (6)
5	52 016 01	52 016 01	52 016 02	Exhaust Valve (2)	31	X-802-8	X-802-8	X-802-8	Screw (2)
6	52 017 01	52 017 01	52 017 01	Intake Valve (2)	32	X-802-10	X-802-10	X-802-10	Screw (2)
7	52 018 01	52 018 01	---	Spring Retainer (4)	33	41 468 01	41 468 01	41 468 01	Washer (2)
8	52 019 01	52 019 02	52 019 02	Tappet (4)	34	---	X-75-23	X-75-23	Pipe Plug, 1/8
9	52 032 05	52 032 05	52 032 05	Valve Stem Seal (2)	35	---	52 755 42	52 755 42	Closure Plate Kit
10	---	---	230011	Intake Valve Retainer	36	---	52 755 33	52 755 33	Oil Relief Kit
11	---	---	230020	Exhaust Valve Rotator	37	---	X-75-10	X-75-10	Drain Plug
12	---	---	230010	Valve Intake Spring	38	---	52 141 02	52 141 02	O-Ring
13	---	---	230168	Exhaust Valve Spring					CRANKSHAFT - GROUP 8
					1	52 014 58	52 014 66	52 014 66	Crankshaft
				CARBURETOR - GROUP 5	2	52 468 03	52 468 03	52 468 03	Thrust Washer, .119/.122
1	52 041 02	52 041 09	52 041 09	Intake Gasket (2)		52 468 04	52 468 04	52 468 04	Thrust Washer, .128/.131. (A.R.)
2	52 164 01	52 164 06	52 164 06	Intake Manifold		52 468 05	52 468 05	52 468 05	Thrust Washer, .137/.140 (A.F.)
3	X-6-8	X-6-8	X-6-8	Screw 5/16-18 x 2-3/4 (2)					CYLINDER HEAD - GROUP 9
4	X-21-1	X-21-1	X-21-1	Lock Washer 5/16 (4)	1	220534	220534	220534	Washer 5/16 (18)
5	X-77-2	X-77-2	X-77-2	Nut (2)	2	41 086 02	41 086 02	41 086 02	Screw 5/16-18 x 1-1/2 (18)
6	X-352-37	X-352-37	X-352-37	Stud 5/16-18 x 1 (2)	3	52 015 05	52 015 06	52 015 06	Cylinder Head (2)
7	X-391-1	25 155 02	25 155 02	Connector	4	52 052 03	52 052 03	52 052 03	Head Gasket (2)

ORDER PARTS FROM YOUR LOCAL KOHLER ENGINE DEALER

MODEL KT17 QS

REF. NO.	KT17 24218	KT17 24314	KT17 24351	DESCRIPTION	REF. NO.	KT17 24218	KT17 24314	KT17 24351	DESCRIPTION
				DIPSTICK - GROUP 10					
1	X-67-64	X-67-64	X-67-64	Screw 10-32 x 3/8	9	X-269-28	X-269-28	X-269-28	Governor Retainer
2	X-75-6	---	X-75-6	Oil Fill Plug	10	X-795-1	---	---	R.H. Screw 1/4-20
3	52 038 04	52 038 04	52 038 04	Dipstick	11	231355	231355	231355	Governor Stop Pin
4	52 123 02	52 123 09	52 123 02	Oil Fill Tube	12	234614	234614	234614	Governor Stop
5	52 154 01	52 154 01	52 154 01	Tube Clip	13	235778	235778	235778	Cable Clamp (2)
6	---	52 173 01	52 173 01	Pipe Cap	14	A-237031	A-235743-S	A-235743-S	Governor Gear
7	---	52 134 04	52 134 04	Oil Fill Tube	15	51 078 02	52 078 04	52 078 04	Governor Cross Shaft
8	---	X-427-1	X-427-1	Lock Nut, 3/4	16	51 237 01	---	51 237 01	Governor Clamp
				STARTER - GROUP 11	17	52 091 04	52 091 04	52 091 04	Governor Spring
1	X-20-1	X-20-1	X-20-1	Washer 1/4 (2)	18	52 119 01	52 119 01	52 119 01	Speed Control Lever
2	X-81-1	X-81-1	X-81-1	Nut 1/4-20 (2)	19	52 187 01	52 187 02	52 187 02	Governor Arm
3	52 098 03	52 098 03	52 098 03	Starter - Assembly	20	52 354 03	52 354 03	52 354 03	Governor Link
4	52 755 05	52 755 05	52 755 05	Drive Kit	21	---	X-25-12	X-25-12	Washer, plain
5	52 755 08	52 55 08	52 755 08	Drive Parts Kit	22	---	X-25-102	X-25-102	Washer, plain
6	52 227 01	52 227 01	52 227 01	Drive End Cap					IGNITION - GROUP 18
7	52 170 02	52 170 02	52 170 02	Armature	1	X-67-83	X-67-83	X-67-83	Screw 1/4-20 x 7/16 (2)
8	47 755 12	48 227 04	48 227 04	Commutator End Cap	2	X-131-1	X-131-1	X-131-1	Screw 10-24 x 3/8 (4)
9	52 211 01	52 211 01	52 211 01	Thru w/Washer Bolt	3	X-67-96	X-5-3	X-5-3	Screw 1/4-20
10	48 755 15	48 755 15	48 755 15	Brush Kit	4	52 041 11	52 041 11	52 041 11	Gasket
				EXHAUST - GROUP 12	5	236602	236602	236602	Connector
1	X-21-1	X-21-1	---	Washer 5/16 (4)	6	48 155 02	48 155 02	48 155 02	Connector
2	X-82-2	X-82-2	---	Nut 5/16-18 (4)	7	41 403 05	41 403 05	41 403 05	Rectifier - Regulator
3	X-352-18	X-352-18	---	Stud 5/16-18 x 4 (4)	8	237878	237878	237878	Stator
4	52 041 06	52 041 10	---	Exhaust Gasket (2)	9	47 150 03	47 150 03	47 150 03	Breaker
5	52 054 05	52 054 05	---	No. 1 Exhaust Manifold	10	51 096 02	51 096 02	51 096 02	Breaker Cover
6	52 054 06	52 054 06	---	No. 2 Exhaust Manifold	11	51 132 02	51 132 02	51 132 02	Spark Plug (2)
				EXHAUST - GROUP 12A	12	52 147 01	52 147 01	52 147 01	Condenser
1	---	---	52 068 11	Muffler	13	52 411 01	52 411 05	52 411 05	Breaker Push Rod
2	---	---	X-55-6	Hex Socket Screw, 5/16-18 x 3/4 (2)	14	52 145 02	52 145 02	52 145 02	Ignition Coil
3	---	---	X-21-1	Lock Washer 5/16 (2)	15	52 445 03	52 445 03	52 445 03	Coil Strap
4	---	---	X-82-2	Hex Nut 5/16-18 (2)	16	52 348 01	52 348 01	52 348 01	Hi-Tension Lead
5	---	---	X-352-18	Stud 5/16-18 x 4 (2)	17	52 348 02	52 348 02	52 348 02	Hi-Tension Lead
6	---	---	52 112 08	Spacer 2-1/4 (2)	18	X-67-51	X-67-51	X-67-51	H.C. Screw 10-24 x 3/4 (4)
7	---	---	52 041 14	Exhaust Gasket	19	X-67-62	X-67-62	X-67-62	Screw 1/4-20 x 3/4
8	---	---	X-132-5	H.C. Screw 1/4-20 x 1					PISTON & ROD - GROUP 22
9	---	---	X-25-73	Plain Washer 1/4	1	52 067 29	52 067 61	52 067 61	Connecting Rod-Std.
				FLYWHEEL - GROUP 13	2	52 067 30	52 067 30	52 067 30	Connecting Rod-.010 U.S. (2)
1	52 162 03	52 755 22	52 755 22	Grass Screen	3	52 074 39	52 074 67	52 074 67	Piston-Assembly-Std. (2)
2	X-7-27	X-7-38	X-7-38	H.C. Screw 3/8-24	4	52 074 40	52 074 68	52 074 68	Piston-Assembly-.003 (2)
3	X-22-1	X-22-1	X-22-1	Lock Washer 3/8	5	52 074 41	52 074 69	52 074 69	Piston-Assembly-.010 (2)
4	X-286-17	X-286-17	X-286-17	Square Key	6	52 074 42	42 074 70	52 074 70	Piston-Assembly-.020 (2)
5	52 025 20	52 025 25	52 025 25	Flywheel	7	52 074 43	52 074 71	52 074 71	Piston-Assembly-.030 (2)
6	52 114 01	52 114 02	52 114 02	Washer	3	230004	230004	230004	Piston Pin Retainer (4)
7	X-159-2	X-159-2	X-159-2	H.C. Screw (4)	4	52 108 01	52 108 01	52 108 01	Ring Set-Std. & .003 (2)
8	X-166-2	47 086 22	47 086 22	T.H. Screw (4)	5	52 108 02	52 108 02	52 108 02	Ring Set-.010 (2)
9	X-25-52	---	---	Plain Washer (4)	6	52 108 03	52 108 03	52 108 03	Ring Set-.020 (2)
10	---	X400-69	X400-69	Spacer	7	52 108 04	52 108 04	52 108 04	Ring Set-.030 (2)
11	---	47 086 06	47 086 06	T.H. Screw (4)					OIL PUMP - GROUP 25
				FUEL PUMP - GROUP 14	1	X-67-64	X-67-64	X-67-64	Screw 10-32 x 7/16 (4)
1	X-380-1	X-380-1	X-380-1	Connector	2	X-280-25	X-280-25	X-280-25	Roll Pin
2	X-391-1	25 155 02	25 155 02	Connector	3	51 414 01	51 414 01	51 414 01	Inner Rotor
3	X-174-2	47 086 08	47 086 08	Screw (2)	4	51 414 02	51 414 02	51 414 02	Outer Rotor
4	X-426-9	X-426-9	X-426-9	Hose Clamp (2)	5	52 043 03	52 043 05	52 043 05	Oil Pump Gear
5	47 041 04	47 041 04	47 041 04	Gasket	6	52 096 03	52 096 03	52 096 03	Oil Pump Cover
6	52 559 01	52 559 01	52 559 01	Fuel Pump	7	52 144 05	52 144 05	52 144 05	Oil Pump Shaft
7	X-386-54	X-810-3	X-810-3	Hose	8	52 422 01	52 422 01	52 422 01	Shim Spacer (A.R. Max. 2)
8	X-25-63	X-25-63	X-25-63	Plain Washer (2)					LOW OIL PRESSURE SWITCH - GROUP 32
				GOVERNOR - GROUP 17	1	---	---	52 099 06	Oil Pressure Switch
1	X-5-1	X-5-1	X-5-1	H.C. Screw, 1/4-20 x 5/8	2	---	---	52 158 05	Reducer
2	X-22-12	X-22-12	X-22-12	Lock Washer	3	---	---	52 518 06	Lead, 16 ga. 12" un-insulated push tabs male and female 1/4
3	X-25-12	---	---	Plain Washer					
4	X-25-72	X-25-72	X-25-72	Plain Washer					
5	X-25-102	X-25-63	X-25-63	Plain Washer 1/4 (2)					
6	X-67-97	X-67-97	X-67-97	H.C. Screw 10-24 x 7/16 (2)					
7	X-81-1	X-81-1	X-81-1	Nut 1/4-20					
8	X-131-1	52 211 04	52 211 04	Screw					