

SNOW THROWER ATTACHMENT

Serial Number
0200101 thru 0599999

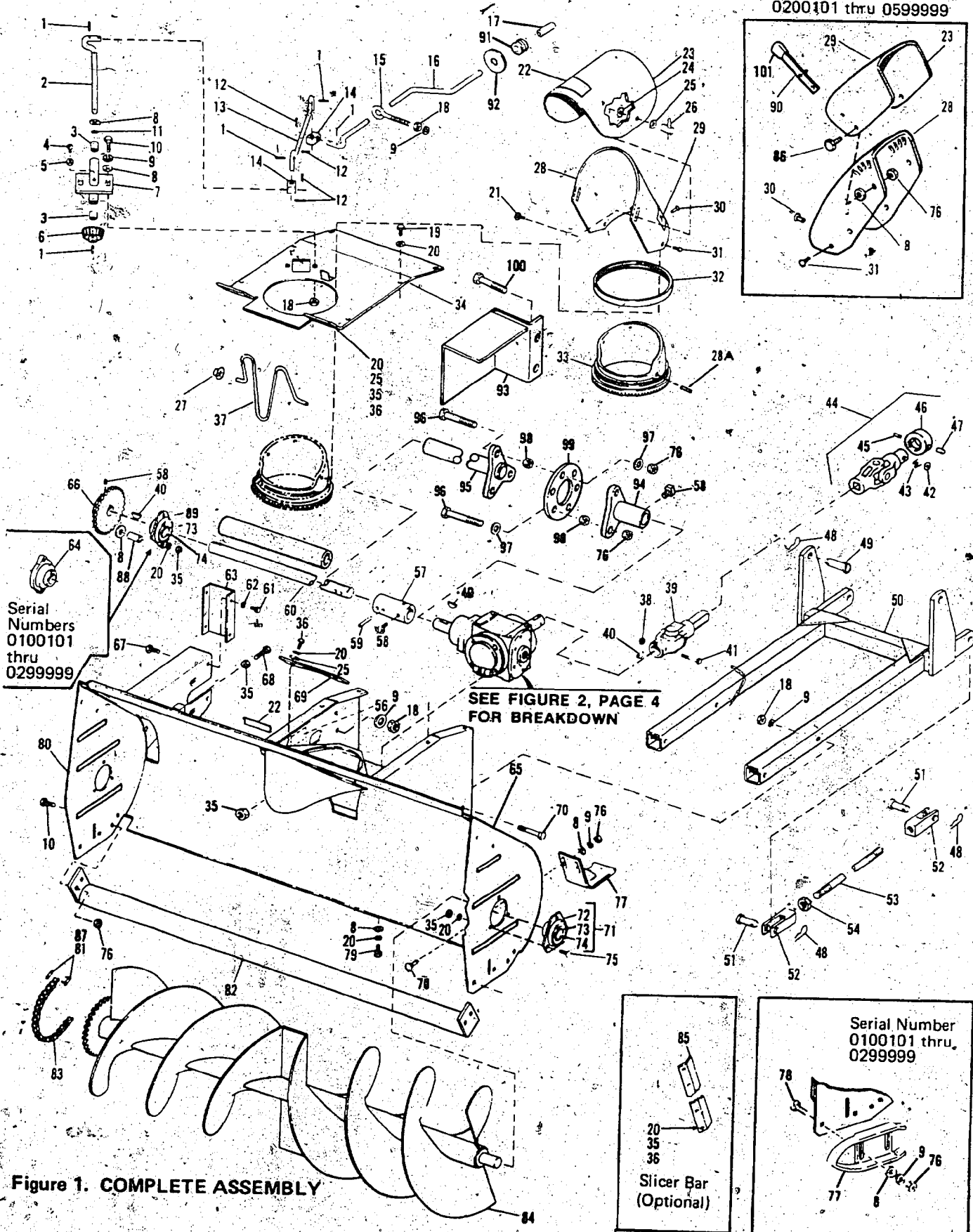


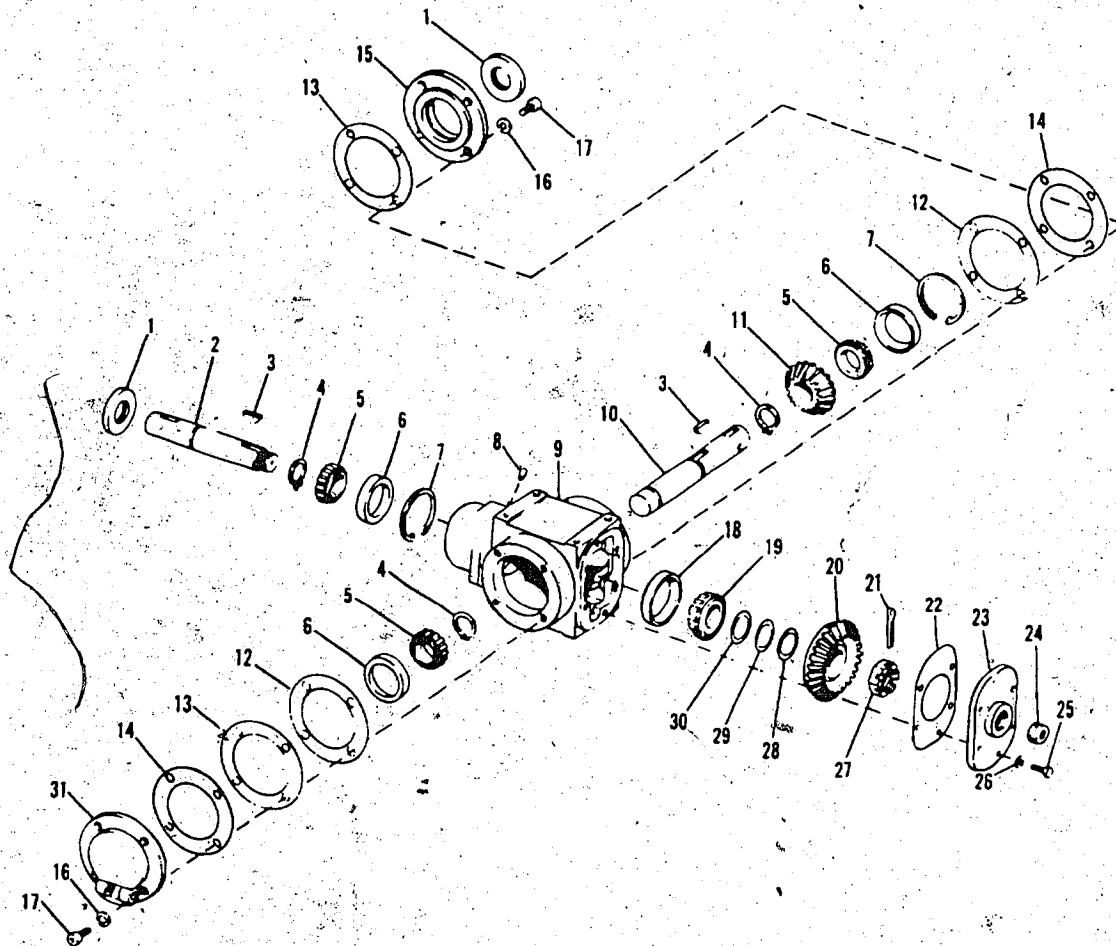
Figure 1. COMPLETE ASSEMBLY

REF. NO.	PART NO.	DESCRIPTION	NO. REQ'D.	REF. NO.	PART NO.	DESCRIPTION	NO. REQ'D.
1	1177625	Drive Pin, 1/8 x 3/4	6	52	1714573	End Rod	4
2	1717017	Chute Control Shaft	1	53	1722631	Push Rod	2
3	1185395	Sleeve/Bearing	2	54	1108891	Jam Nut, 5/8-11	2
4	1102571	Machine Screw, 1/4-20 x 3/4	1	55	1729191	Tube (1)(2)(3)(4)	1
5	1186229	Hex Nut, 1/4-20	1		1739852	Tube (5)	1
6	1714367	Chute Control Pinion	1	56	1719347	Decal (Shear Pin) (1)(2)(3)(4)	1
7	1719333	Chute Control Assembly	1	57	1718718	Coupling (1)(2)(3)(4)	1
8	1107383	Flat Washer, 3/8	15	58	1182554	Set Screw, 5/16-18 x 5/16 (1)(2)(3)(4)	4
9	1100243	Lockwasher, 3/8	14		1733185	Sq. Hd. Screw (5)	4
10	1186128	Carriage Bolt, 3/8-16 x 1	6	59	1187614	Drive Pin, 1/4 x 1-3/4 (1)(2)(3)(4)	1
11	1705119	Bowed Washer	As Req'd	60	1718715	Rotor Drive Shaft (1)(2)(3)(4)	1
12	1100349	Cotter Pin, 1/8 x 3/4	4	61	1186307	Hex Head Capscrew, 1/4-20 x 1/2	4
13	1719344	Chute Control Rod	1	62	1100241	Lockwasher, 1/4	4
14	1714782	Swivel Block	2	63	1718771	End Cover	1
15	1712920	Eye Bolt	2	64	1718764	Self-Aligning Bearing (1)(2)	1
16	1722629	Crank Handle Rod	1	65	1732894	Warning Decal (3)	1
17	1715685	Grip	1		1735925	Warning Decal (4)(5)	1
18	1186231	Hex Nut, 3/8-16	9	66	1718757	Sprocket -26T	1
19	1100088	Hex Head Capscrew, 5/16-18 x 1/2	6	67	1186100	Carriage Bolt, 5/16-18 x 1	2
20	1100242	Lockwasher, 5/16	20	68	1185742	Capscrew, 5/16-18 x 1-1/2	1
21	1185518	Square Bolt, 1/4-20 x 5/8 (1)	2	69	1718714	Closure Plate (1)(2)	1
22	1727451	Decal (Logo) (1)(2)(3)	1	70	1100049	Hex Head Capscrew, 3/8-16 x 2-1/4	4
	1736651	Decal (Logo) (4)(5)	1	71	1717076	Self-Aligning Br. Assy. (Incl. Ref. Nos. 72 thru 74)	2
23	1718723	Deflector Cap (1)	1	72	1185787	Flange	4
	1723746	Deflector Cap (2)(3)(4)(5)	1	73	1185788	Collar	3
24	1185569	Shakeproof Washer (1)	2	74	1185587	Bearing	3
25	1107382	Flat Washer, 5/16	2	75	1186098	Carriage Bolt, 5/16-18 x 3/4	6
26	1714373	Wing Nut (1)	2	76	1733398	Self-Locking Nut, 3/8-16	16
27	1186048	Push Nut	2	77	1715011	Shoe (1)(2)	2
28	1718722	Outlet Duct (1)	1		1715754	Shoe (3)(4)(5)	2
	1723748	Outlet Duct (2)(3)(4)(5)	1	78	1186128	Carriage Bolt, 3/8-16 x 1	4
28A	1177625	Roll Pin	2	79	1100044	Capscrew, 5/16-18 x 3/4	4
29	1724816	Decal (Caution) (1)(2)	1	80	1721277	Rotor Housing Assembly	1
	1730996	Decal (Caution) (3)(4)	1	81	1185026	Connector Link	1
	1735924	Decal (Caution) (5)	1	82	1718734	Scraper Assembly	1
30	1185878	Pop Rivet, 3/16 x 3/8	2	83	1719343	Drive Chain	1
31	1185879	Pop Rivet, 3/16 x 1/2	2	84	1721278	Rotor Assembly	1
32	1719394	Seal Ring	1	85	1715427	Drift Slicer (Optional)	2
33	1718730	Swivel Duct (1)	1	86	1100086	Hex Head Capscrew, 3/8-16 x 3/4	2
	1721692	Swivel Duct (2)(3)(4)(5)	1	87	1120213	Offset Link (3)	1
34	1718724	Gear Cover Assembly (1)	1	88	1716778	Spacer (3)(4)(5)	2
	1729188	Gear Cover Assembly (2)(3)(4)(5)	1	89	1185588	Bearing Flange (3)(4)(5)	2
35	1186230	Hex Nut, 5/16-18	11	90	1723643	Adjusting Lever Assembly (2)(3)(4)(5)	1
36	1103195	Hex Head Capscrew, 5/16-18 x 5/8	4	91	1734934	Rubber Grommet (3)(4)(5)	1
37	1722501	Chute Guard	1	92	1734930	Instruction Plate (3)(4)(5)	1
38	1110106	Lock Nut, 1/4-20	1	93	1739183	Guard (5)	1
39	1718618	Universal Joint Assy.	1	94	1739389	HUB (5)	1
40	1100276	Woodruff Key, 1/4 x 7/8	3	95	1739390	Rotor Drive Axle (5)	1
41	1111601	Hex Head Capscrew, 1/4-20 x 1-3/4	1	96	1100043	Hex Screw 3/8-16 x 1-1/4 (5)	6
42	1725334	Thrust Washer (1)(2)	1	97	1107383	Flat Washer 3/8 (5)	6
43	1723782	Spring (1)(2)	1	98	1186247	Jam Nut 1/2-20 (5)	6
44	1723790	Universal Joint Assy. (Incl. Ref. Nos. 42, 43, 45, 46, & 47) (1)(2)	1	99	1734331	Coupling Disc. (5)	1
45	1187762	Groove Pin, 3/16 x 3/8 (1)	1	100	1100046	Hex Screw 3/8-16 x 1 (5)	2
46	1723781	Lock Collar (1)(2)	1	101	1730241	Grip (5)	1
47	1118922	Drive Pin, 3/16 x 1/2 (1)(2)	1	N.I.	1735222	Spray Paint, Black	
48	1723478	Spring Cotter	6	N.I.	1735223	Spray Paint, White	
49	1709622	Clevis Pin	2	N.I.	1736796	Spray Paint, Dark Green	
50	1718713	Hitch Assembly	1				
51	1719324	Clevis Pin (Special)	4				

• Common Hardware - Purchase Locally (Grade 5 Where Applicable)

*1714207 Repair Kit for Joint Marked 6N
*1714208 Repair Kit for Joint Marked NEAPCO

(1) Serial Number 0100101 thru 0199999
(2) Serial Number 0200101 thru 0299999
(3) Serial Number 0300101 thru 0399999
(4) Serial Number 0400101 thru 0499999
(5) Serial Number 0500101 thru 0599999



REF. NO.	PART NO.	DESCRIPTION	NO. REQ'D.
1	1185687	Oil Seal	2
2	1718721	Shaft, Output	1
3	1709611	Woodruff Key, 1/4 x 7/8	2
4	1185689	Retaining Ring	3
5	1185661	Bearing Cone	3
6	1185660	Bearing Cup	3
7	1118735	Retaining Ring	2
8	182682	Breather	1
9	1719710	Gear Case (Incl. Ref. Nos. 18, 19, 28, 29 & 30)	1
10	1718720	Shaft, Input	1
11	1717457	Bevel Pinion - 18 T	1
12	1717456	Gear Box Gasket	As Req'd.
13	1719501	Gear Box Gasket	As Req'd.
14	1721346	Gear Box Gasket (Steel) .030	1
15	1717454	Bearing Retainer	1
16	1100242	Lockwasher, 5/16	8
17	1110818	Hex Head Socket Screw, 5/16-18 x 3/4	8

REF. NO.	PART NO.	DESCRIPTION	NO. REQ'D.
18	1185118	Bearing Cup	1
19	1185688	Bearing Cone	1
20	1717459	Bevel Gear, 29 T	1
21	1100352	Cotter Pin, 1/8 x 1-1/2	1
22	1717449	Gasket	1
23	1717448	Cover	1
24	1185824	Pipe Plug, 3/4-14 N.P.T. (1)	1
	1100937	Pipe Plug (2)	1
25	1185823	Cap screw, 1/4-20 x 5/8 (1)	6
	1180805	Hex Head Cap Screw, 1/4-20 x 3/4 (2)	6
26	1100241	Lockwasher, 1/4	6
27	1185662	Slotted Nut, 7/8-14	1
28	1800750	Shim, .003	1
29	1800751	Shim, .005	1
30	1800338	Shim, .015	1
31	1718620	Bearing Retainer	1
N.I.	1723456	Gear Lube, EP90	

Figure 2. GEAR CASE ASSEMBLY

(1) Serial Number 0100101 thru 0199999
 (2) Serial Number 0200101 and up