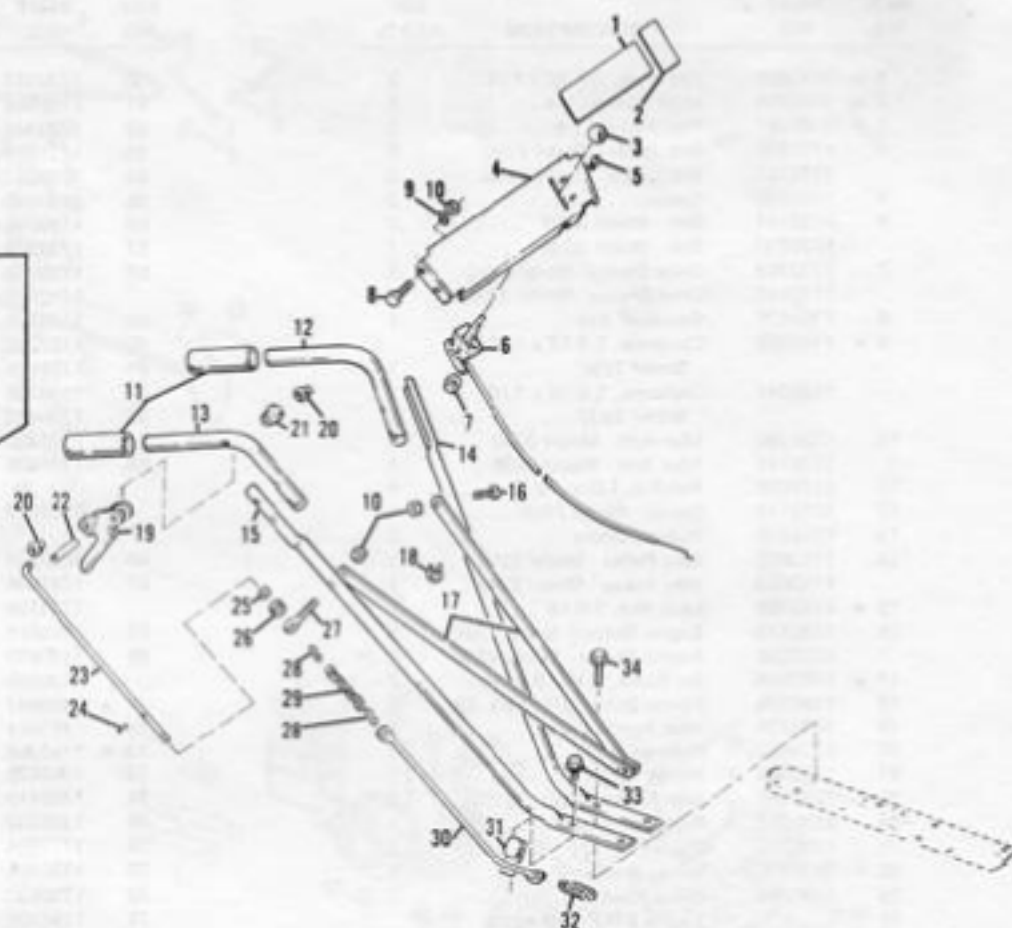
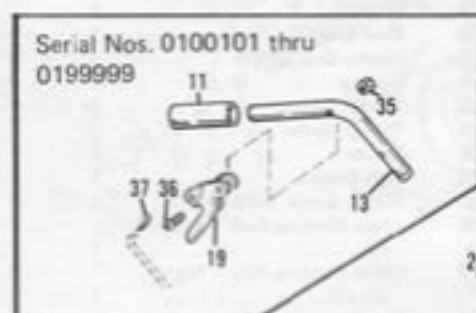


REF. NO.	PART NO.	DESCRIPTION	NO. REQ'D.	REF. NO.	PART NO.	DESCRIPTION	NO. REQ'D.
1	1111601	Capscrew, 1/4-20 x 1.75	2	50	1730343	Connector Link No. 35	1
2	1100241	Lock Washer, 1/4	2	51	1185668	Retaining Ring	1
3	1107381	Flat Washer, 1/4	2	52	1730345	Needle Bearing	1
4	1731758	Belt Guide - Model 2250	1	53	1731627	Arm	2
	1731757	Belt Guide - Model 2230	1	54	1730884	Sprocket Assembly	1
5	1731737	Spacer	2	55	1730341	Drive Chain No. 50	1
6	1732171	Belt - Model 2250	2	56	1185018	Connector Link No. 50	1
	1732880	Belt - Model 2230	1	57	1730346	Spacer	1
7	1732169	Drive Sheave - Model 2250	1	58	1730339	Dust Seal (1)	2
	1730931	Drive Sheave - Model 2230	1		1732505	Washer Seal (2) (3)	2
8	1104435	Woodruff Key	1	59	1185301	Oil Seal	2
9	1100086	Capscrew, 3/8-16 x 1.75 - Model 2250	1	60	1187206	Needle Bearing	2
	1100047	Capscrew, 3/8-16 x 1.50 - Model 2230	1	61	1720529	Thrust Washer	2
10	1732180	Idler Arm - Model 2250	1	62	1730338	Spacer	1
	1732177	Idler Arm - Model 2230	1	63	1730333	Tine Shaft	1
11	1177625	Roll Pin, 1/8 x .75	1	64	1186331	Flange Screw, 5/16-18 x 1	1
12	1732174	Spacer - Model 2250	1	65	1731608	Chain Housing Assy. - Right (1)	1
13	1715716	Nylon Bushing	2		1732890	Chain Housing Assy. - Right (2) (3)	1
14	1713802	Idler Pulley - Model 2250	1	66	1090234	Flat Washer	4
	1713803	Idler Pulley - Model 2230	1	67	1731634	Tire & Wheel (1) (2)	2
15	1110108	Lock Nut, 3/8-16	2		1723729	Tire & Wheel (3)	2
16	1732173	Engine Sheave - Model 2250	1	68	1703011	Cotter Spring	6
	1732278	Engine Sheave - Model 2230	1	69	1730892	Wheel Support (1) (2)	1
17	1182554	Set Screw, 5/16-18 x .31	2		1736969	Wheel Support (3)	1
18	1186328	Flange Screw, 5/16-18 x .62	5	70	1100047	Capscrew, 3/8-16 x 1.50	1
19	1731735	Idler Arm Support	1	71	1703061	Clevis Pin	1
20	1728072	Pushnut	1	72	1100356	Cotter Pin, 3/32 x 1	2
21	1732208	Spring	1	73	1700920	Wheel Support	1
22	1732212	Idler Control Arms	1	74	1706419	Clevis Pin	1
23	1732213	Push-On Retainer	1	75	1186332	Flange Screw, 5/16-18 x 1.25	3
24	1730348	Clevis Pin	1	76	1731694	Frame - Right	1
25	1732209	Spring Bracket	1	77	1730348	Flange Screw, 3/8-16 x 2.75	2
26	1731296	Decal (Caution)	1	78	1730533	Flange Screw, 5/16-18 x 2.75	2
27		Engine 5 H.P. - (Briggs & Stratton Model 130202 Type 0510-02) - Model 2250	1	79	1186329	Flange Screw, 5/16-18 x .75	1
		Engine 3 H.P. - (Briggs & Stratton Model 80202 Type 0748-01) - Model 2230	1	80	1731325	Decal (Oil Fill)	1
28	1104333	Key, 3/16 x 1	1	81	1731026	Depth Stick	1
29	1731218	Decal (FMC) (1) (2)	1	82	1732589	Oil Level Plug	1
	1736908	Decal (FMC) (3)	1	83	1806246	Plug (2) (3)	1
30	1731675	Belt Guard	1	84	1730370	Tine - Right Hand (1)	8
31	1186327	Flange Screw, 5/16-18 x .50	14	85	1731799	Hub Assembly Extension (1)	1
32	1730266	Decal (Caution)	1		1732072	Hub Assembly Extension (Incl. Ref. Nos. 38, 84, 86, & 96) (2) (3)	1
33	1185873	Speed Nut, 5/16-18	2	86	1730371	Tine - Left Hand (1)	8
34	1731686	Belt Guard Support	1	87	1731798	Hub Assembly (1)	1
35	1732499	Flange Nut, 5/16-18	25		1722070	Hub Assembly (Incl. Ref. Nos. 38, 84, 86, 96) (2) (3)	1
36	1731687	Belt Guard Support	1	88	1710731	Clevis Pin	2
37	1731688	Belt Guard Support	1	89	1891200	Clevis Pin	2
38	1186393	Flange Nut, 3/8-16 (1)	38	90	1730366	Adapter Tube	1
	1186393	Flange Nut, 3/8-16 (2) (3)	6	91	1186097	Rd. Hd. Bolt, 5/16-18 x 5/8	1
39	1715484	Spacer	1	92	1732590	Chaincase Gasket	1
	1700205	Spacer - Model 2230 (1) (2)	1	93	1731799	Hub Assembly (1)	1
40	1732056	Rubber Pad	1		1732071	Hub Assembly (Incl. Ref. Nos. 38, 84, 86 & 96) (2) (3)	1
41	1731695	Frame - Left	1	94	1731799	Hub Assembly	1
42	1730528	Spacer	3		1732073	Hub Assembly (Incl. Ref. Nos. 38, 84, 86 & 96) (2) (3)	2
43	1185537	Oil Seal	1	95	1100799	Capscrew, 5/16-18 x 1.50	4
44	1731607	Chain Housing Assy. - Left (1)	1	96	1186347	Flange Screw, 3/8-16 x 1 (1)	35
	1732889	Chain Housing Assy. - Left (2) (3)	1	97	1110107	Lock Nut, 5/16-18	4
45	1730344	Needle Bearing	3	NI	1730118	Sealant, 3 oz.	
46	1715301	Thrust Washer	4	NI	1730356	Spray Paint, Artec Gold (1) (2)	
47	1730347	Spacer	1	NI	1730354	Spray Paint, Black (1) (2)	
48	1731629	Input Shaft	1	NI	1736795	Spray Paint Light Green (3)	
49	1730913	Drive Chain No. 35	1	NI	1736796	Spray Paint Dark Green (3)	

• Common Hardware - Purchase Locally (Grade 5 where applicable).
 • Purchase Parts From Your Briggs & Stratton Outlet.

(1) Serial Numbers 0100101 thru 0199999
 (2) Serial Numbers 0200101 thru 0299999
 (3) Serial Numbers 0300101 thru 0399999



REF. NO.	PART NO.	DESCRIPTION	NO. REQ'D.
1	1731292	Decal (Logo) - Model 2250 (1) (2)	1
	1731769	Decal (Logo) - Model 2230 (1) (2)	1
	1736909	Decal (Logo) - Model 2230 (3)	1
2	1731294	Decal (Throttle Control) (1) (2)	1
3	1724527	Knob (1) (2)	1
	1736314	Knob (3)	1
4	1731275	Console	1
5	1115815	Rd. Hd. Phil. Rec. Screw, No. 10-24 x .62	2
6	1731631	Throttle Control - Model 2250	1
	1731632	Throttle Control - Model 2230	1
7	1185985	Keps Nut, No. 10-24	2
8	1100779	Capscrew, 5/16-18 x 1.75	4
9	1732279	Bowed Washer	4
10	1110107	Lock Nut, 5/16-18	6
11	1703539	Handle Grip (1) (2)	2
	1736931	Handle Grip (3)	2
12	1731279	Handle, Upper Left	1
13	1732888	Handle, Upper Right	1
14	1731624	Handle, Lower Left	1

REF. NO.	PART NO.	DESCRIPTION	NO. REQ'D.
15	1731625	Handle, Lower Right	1
16	1100799	Capscrew, 5/16-18 x 1.50	1
17	1731696	Handle Support	2
18	1805345	Tie Cable	1
19	1731970	Clutch Control Lever	1
20	1728072	Pushnut	3
21	1732892	Flanged Bearing (2) (3)	2
22	1732891	Pivot Pin (2) (3)	1
23	1732195	Clutch Control Rod	1
24	1185811	Drive Pin, 3/32 x 1/2	1
25	1107381	Flat Washer, 1/4	1
26	1732197	Grommet	1
27	1725199	Eye Bolt	1
28	1732198	S-Hook	2
29	1732199	Chain	1
30	1732205	Clutch Control Cable	1
31	1732207	Cable Bracket	1
32	1715564	Spring	1
33	1186347	Flange Screw, 3/8-16 x 1 (2) (3)	3
34	1186350	Flange Screw, 3/8-16 x 1.75	1
35	1110106	Lock Nut, 1/4-20 (1)	1
36	1115958	Rd. Hd. Mach. Screw, 1/2-20 x 1.50 (1)	1
37	1187385	Cotter Pin, 1/16 x 1/2 (1)	1