

Bolens

Snow Thrower

Model 524

Serial Number

0200101

thru

0599999

Parts List

FORM P552923-1(9/77)
SUPERSEDES P552923

BOLENS 24 INCH SNOW THROWER

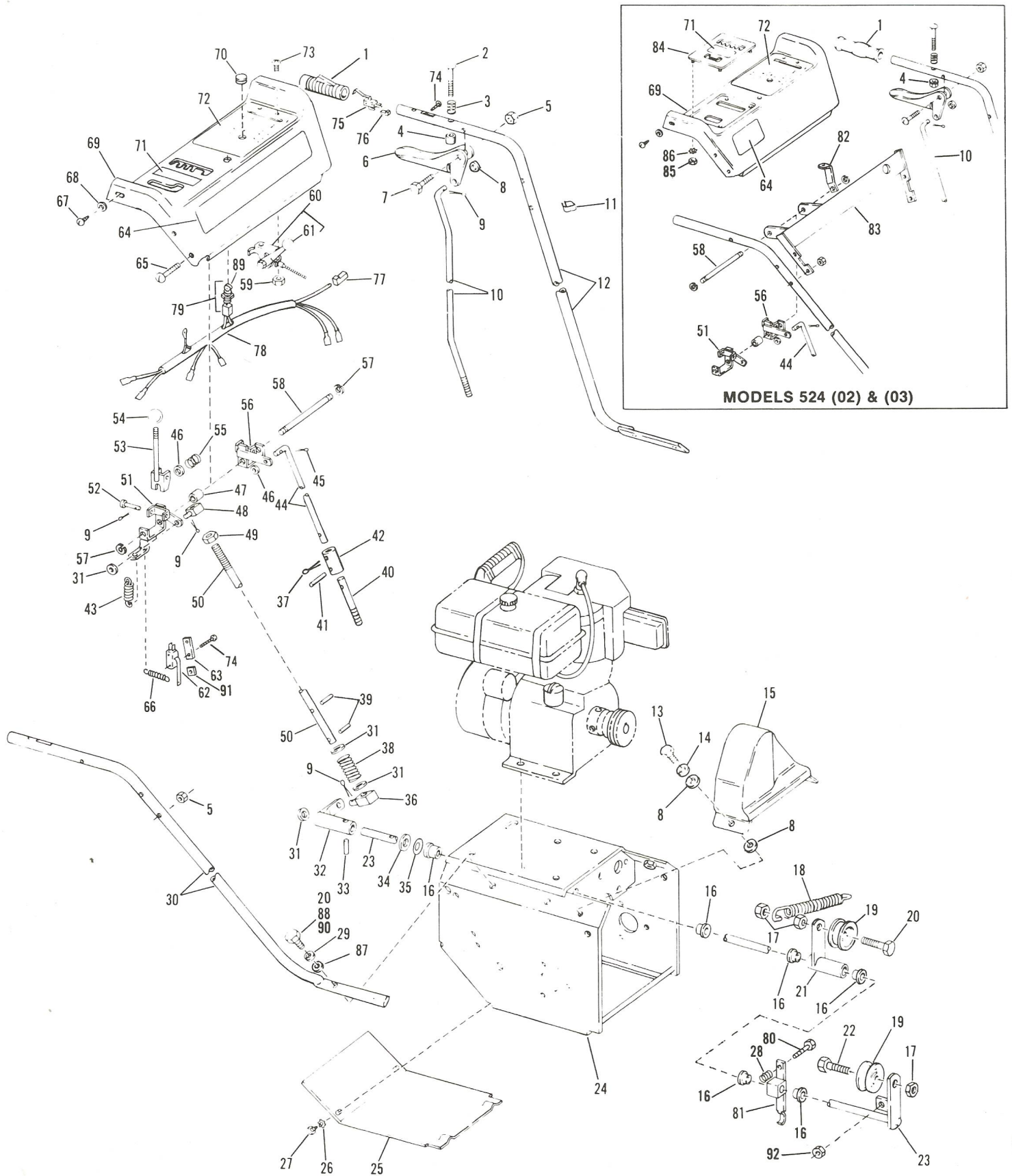


Figure 1 TRIM, CONTROL AND FRAME ASSEMBLY

REF. NO.	PART NO.	DESCRIPTION	NO. REQ'D.
1	1703539	Handle Grip (2)(3)	2
	1729210	Handle Grip (4)(5)	2
2	• 1186080	Carriage Bolt, 1/4-20 x 3 (2)(3)(4)	1
3	1720884	Compression Spring (2)(3)(4)	1
4	1727167	Stop Collar (2)(3)(4)	1
5	• 1110106	Hex Lock Nut, 1/4-20	5
6	1715131	Clutch Handle (2)(3)(4)	1
	1732537	Clutch Handle (5)	1
7	• 1100811	Hex Head Capscrew, 1/4-20 x 1-1/2.	1
8	• 1107381	Flat Washer, 1/4 (2)(3)(4)	4
	1107381	Flat Washer, 1/4 (5)	2
9	1100346	Cotter Pin, 3/32 x 3/4	5
10	1727050	Clutch Control Rod (2)(3)(4)	1
	1732538	Clutch Control Rod (5)	1
11	149925	Cable Clip	1
12	1725131	Left Hand Handle (2)	1
	1730259	Left Hand Handle (3)(4)	1
	1732539	Left Hand Handle (5)	1
13	• 1100805	Hex Head Capscrew, 1/4-20 x 3/4.	2
14	• 1100241	Lockwasher, 1/4	2
15	1725128	Belt Guard	1
16	1715716	Bushing	6
17	• 1185506	Self Locking Jam Nut, 3/8-16	3
18	1725263	Extension Spring	1
19	1720936	Idler	2
20	• 1100086	Hex Head Capscrew, 3/8-16 x 1-3/4.	5
21	1725176	Idler Arm (2)(3)	1
	1730261	Idler Arm (4)(5)	1
22	• 1100043	Hex Head Capscrew, 3/8-16 x 1-1/4.	1
23	1725173	Idler Arm (2)(3)	1
	1730256	Idler Arm (4)(5)	1
24	1724991	Frame (2)(3)	1
	1728735	Frame (4)(5)	1
25	1725148	Bottom Cover	1
26	• 1185489	Shakeproof Washer, No. 10.	2
27	• 1185750	Self Drilling Screw, No. 10-24 x 1/2.	2
28	1807317	Compression Spring (4)(5)	1
29	• 1100243	Lockwasher, 3/8	4
30	1725133	Right Hand Handle (2)	1
	1730186	Right Hand Handle (3)(4)(5)	1
31	1107382	Flat Washer, 5/16	5
32	1725160	Control Arm (2)(3)	1
	1728167	Control Arm (4)(5)	1
33	1185389	Drive Pin, 5/32 x 3/4	1
34	• 1890234	Flat Washer, 1/2	1
35	1706782	Bowed Washer	1
36	1725265	Swivel Block	1
37	• 1100350	Cotter Pin, 1/8 x 1 (3)(4)(5)	1
38	1713781	Compression Spring	1
39	1724885	Drive Pin, 3/32 x 3/4	2
40	1727159	Shift Rod Extension (3)(4)(5)	1
41	1177625	Roll Pin, 1/8 x 3/4 (3)(4)(5)	1
42	1721782	Coupling (3)(4)(5)	1
43	1728258	Extension Spring (4)(5)	1
44	1727024	Speed Control Rod	1
45	• 1100349	Cotter Pin, 1/8 x 3/4	1
46	• 1107383	Flat Washer, 3/8	2

REF. NO.	PART NO.	DESCRIPTION	NO. REQ'D.
47	1725196	Spacer	1
48	1725264	Swivel Block	1
49	• 1186230	Hex Nut, 5/16-18	1
50	1725267	Auger Control Rod	1
51	1725162	Pivot Arm (2)(3)	1
	1728160	Pivot Arm (4)(5)	1
52	1724760	Clevis Pin	2
53	1725157	Control Lever	2
54	1715817	Knob	2
55	1723367	Compression Spring	2
56	1725164	Pivot Arm (2)	1
	1727029	Pivot Arm (3)(4)(5)	1
57	1185257	Retaining Ring	2
58	1725195	Pivot Shaft	1
59	• 1185985	External Lockwasher Nut No. 10.	2
60	1725297	Throttle Control (Incl Ref 61) (2)(3)	1
	1730430	Throttle Control (Incl Ref 61) (4)(5)	1
61	1724527	Control Knob	1
62	1728199	Interlock Switch (4)(5)	1
63	1725551	Switch Plate (4)	1
64	1723510	Decal (Logo) (2)(3)	1
	1728334	Decal (Logo) (4)(5)	1
65	• 1115987	Round Head Machine Screw, 1/4-20 x 1-1/2.	4
66	1725826	Extension Spring (4)(5)	1
67	• 1185549	Thread Cutting Screw, No. 10-24 x 5/8.	2
68	• 1103959	Flat Washer, No. 10	2
69	1724881	Console (2)	1
	1730185	Console (3)(4)(5)	1
70	1185585	Flip Grommet (4)(5)	1
71	1725258	Decal (Wheel & Auger Drive) (2)	1
	1728332	Decal (Wheel & Auger Drive) (3)(4)(5)	1
72	1725307	Decal (Instructions) (2)	1
	1728333	Decal (Instructions) (3)(4)	1
	1732614	Decal (Instructions) (5)	1
73	• 1115815	Round Head Phillips Screw, No. 10-24 x 5/8.	2
74	• 1725552	Thread Cutting Screw, No. 4-40 x 3/4 (4)(5)	4
75	1728198	Interlock Switch (4)(5)	2
76	1727800	Connector (4)(5)	4
77	1721038	Connector (4)(5)	1
78	1730552	Wiring Harness (4)(5)	1
79	1727321	Ignition Switch (Incl Ref 89) (4)(5)	1
80	• 1100799	Hex Head Capscrew, 5/16-18 x 1-1/2 (4)(5)	1
81	1730264	Brake Arm Assembly (4)(5)	1
82	1725187	Support (2)	1
83	1725144	Crossmember (2)	1
84	1725155	Quadrant (2)	1
85	1109845	Hex Nut, No. 10-32 (2)	4
86	1185489	Shakeproof Washer, No. 10 (2)	4
87	1724642	Washer, Special (2)	4
88	• 1100068	Hex Head Capscrew, 3/8-16 x 3/4 (3)(4)	4
89	1727326	Key Only	1
90	• 1100046	Capscrew, Hex Head, 3/8-16 x 1 (5)	4
91	• 1727777	Speed Nut No. 4-40 (5)	1
92	• 1110107	Nut-Lock 5/16-18 (5)	1
NI	1730356	Spray Paint, Axtec Gold	
NI	1730354	Spray Paint, Black	

• Common Hardware - purchase locally (Grade 5 where applicable)

(2) Serial Numbers 0200101 thru 0299999

(3) Serial Numbers 0300101 thru 0399999

(4) Serial Numbers 0400101 thru 0499999

(5) Serial Numbers 0500101 and up

BOLENS 24 INCH SNOW THROWER

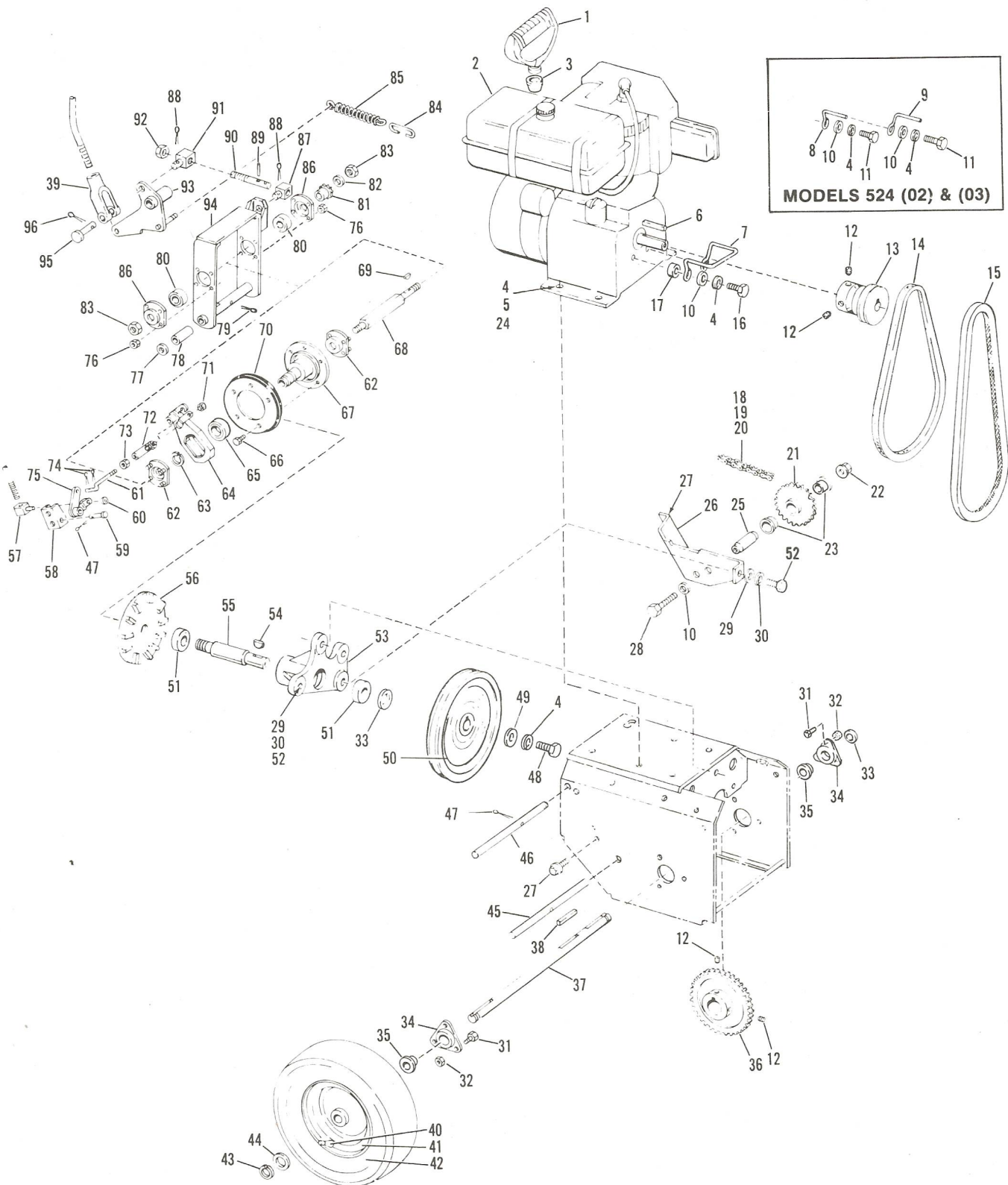


Figure 2 ENGINE AND DRIVE ASSEMBLY

REF. NO.	PART NO.	DESCRIPTION	NO. REQ'D.	REF. NO.	PART NO.	DESCRIPTION	NO. REQ'D.
1	1725153	Starter Handle	1	45	1720870	Bracket Pin	1
2	*	Tecumseh Engine HSSK 50 .	1	46	1727049	Fork Shaft	1
3	1725327	Starter Handle Bumper. . . .	1	47	● 1100350	Cotter Pin, 1/8 x 1.	3
4	● 1100242	Lockwasher, 5/16	7	48	● 1100044	Capscrew, 5/16-18 x 3/4. . .	1
5	● 1100799	Hex Head Capscrew 5/16-18 x 1-1/2 (2)(3)(4) .	4	49	1713233	Washer, Flat Special.	1
6	1187474	Key, 1/4 Square x 1-1/4 . . .	1	50	1725281	Sheave.	1
7	1730258	Belt Guide (4).	1	51	1185809	Ball Bearing	2
8	1725259	Right Hand Belt Guide (2)(3)	1	52	1103212	Capscrew, 3/8-16 x 5/8. . . .	4
9	1725260	Left Hand Belt Guide (2)(3)	1	53	1720906	Bearing Housing	1
10	● 1107382	Flat Washer, 5/16	3	54	1185885	Woodruff Key, 3/16 x 5/8. . .	1
11	● 1100004	Hex Head Capscrew, 5/16-24 x 3/4 (2)(3).	2	55	1725188	Spindle	1
12	● 1182554	Set Screw, 5/16-18 x 5/16. . .	4	56	1720918	Drive Plate	1
13	1726780	Engine Sheave.	1	57	1721146	Pivot.	1
14	1894272	V-belt	1	58	1720797	Lever Bracket	1
15	1725253	V-belt, 34".	1	59	1720869	Clevis Pin.	1
16	● 2200005	Capscrew 5/16-24 x 1 (4)(5)	2	60	1185257	Retaining Ring	1
17	1716729	Spacer (4)(5)	2	61	1720856	Connecting Link	1
18	182087	Offset Link (Half Link)	1	62	1720810	Flange Bearing Assembly . . .	2
19	1185013	Conn. Link, No. 41 Chain. . .	1	63	1185812	Snap Ring	1
20	1720939	Drive Chain, 1/2 Pitch, ASA No. 41	1	64	1720844	Sliding Fork	1
21	1720839	Pinion and Sprocket.	1	65	1185806	Thrust Bearing	1
22	● 1186391	Flange Nut, 5/16-18.	1	66	● 1185797	Screw, 5/16-18 x 1/2 (2)(3)(4)	5
23	1185802	Flange Bearing	2		1186327	Screw, 5/16-18 x 1/2 (5). . .	5
24	● 1100808	Screw, Hex 5/16-18 x 1- 1/4 (5)	4	67	1720904	Friction Disc Hub	1
25	1720877	Pinion Shaft	1	68	1720862	Hex Shaft	1
26	1721713	Support Bracket	1	69	1104435	Woodruff Key.	1
27	● 1186327	Flange Whiz Lock Screw, 5/16-18 x 1/2	4	70	1720859	Molded Friction Disc	1
28	● 1111609	Hex Head Capscrew, 5/16-18 x 2-3/4.	1	71	● 1110149	Lock Nut, 5/16-24.	1
29	● 1107383	Flat Washer, 3/8	5	72	1720925	Ball Joint.	1
30	● 1100243	Lockwasher, 3/8.	4	73	● 1186211	Hex Nut, 5/16-24 (2)(3)(4). .	1
31	● 1111599	Hex Head Capscrew, 1/4-20 x 5/8.	6	74	● 1100346	Cotter Pin, 3/32 x 3/4	2
32	● 1110106	Hex Lock Nut, 1/4-20	3	75	1727026	Transfer Lever	1
33	1185830	Special Washer	2	76	● 1185460	Lock Nut, No. 10-24	8
34	1720920	Bearing Support	1	77	1185831	Shim Washer.	As Req'd.
35	1185801	Flange Bearing	2	78	1720872	Spacer Hub	1
36	1721763	Gear, 48T	1	79	● 1100351	Cotter Pin, 1/8 x 1-1/4.	1
37	1722572	Axle Shaft	1	80	1185808	Ball Bearing	2
38	1104333	Key, 3/16 Square x 1.	1	81	1720861	Sprocket, 9T	1
39	1715927	Clevis	1	82	● 1890234	Flat Washer, 1/2	1
40	1718086	Valve Stem.	2	83	● 1110152	Lock Nut, 1/2-20	2
41	1725314	Wheel Disc.	2	84	1727289	Spring Hook.	1
42	1725299	Tire 4.10/3.50 x 6.	2	85	1727011	Extension Spring.	1
43	1113527	Retaining Ring	2	86	1720811	Flange Bearing	1
44	121898	Washer, Thrust	2	87	1727052	Pivot Block	1
				88	● 1100349	Cotter Pin, 1/8 x 3/4	1
				89	1177625	Roll Pin, 1/8 x 3/4.	2
				90	1727051	Adjusting Rod	1
				91	1727053	Pivot Block	1
				92	● 1186231	Hex Nut, 3/8-16	1
				93	1727048	Pivot Arm Assembly	1
				94	1727058	Bracket Assembly	1
				95	1710348	Clevis Pin.	1
				96	● 1187385	Cotter Pin, 1/16 x 1/2	1

*Purchase Parts from your Tecumseh, Lauson-Power Products Outlet.
 ● Common Hardware - purchase locally (Grade 5 where applicable)

(2) Serial Numbers 0200101 thru 0299999
 (3) Serial Numbers 0300101 thru 0399999
 (4) Serial Numbers 0400101 thru 0499999
 (5) Serial Numbers 0500101 and up

BOLENS 24 INCH SNOW THROWER

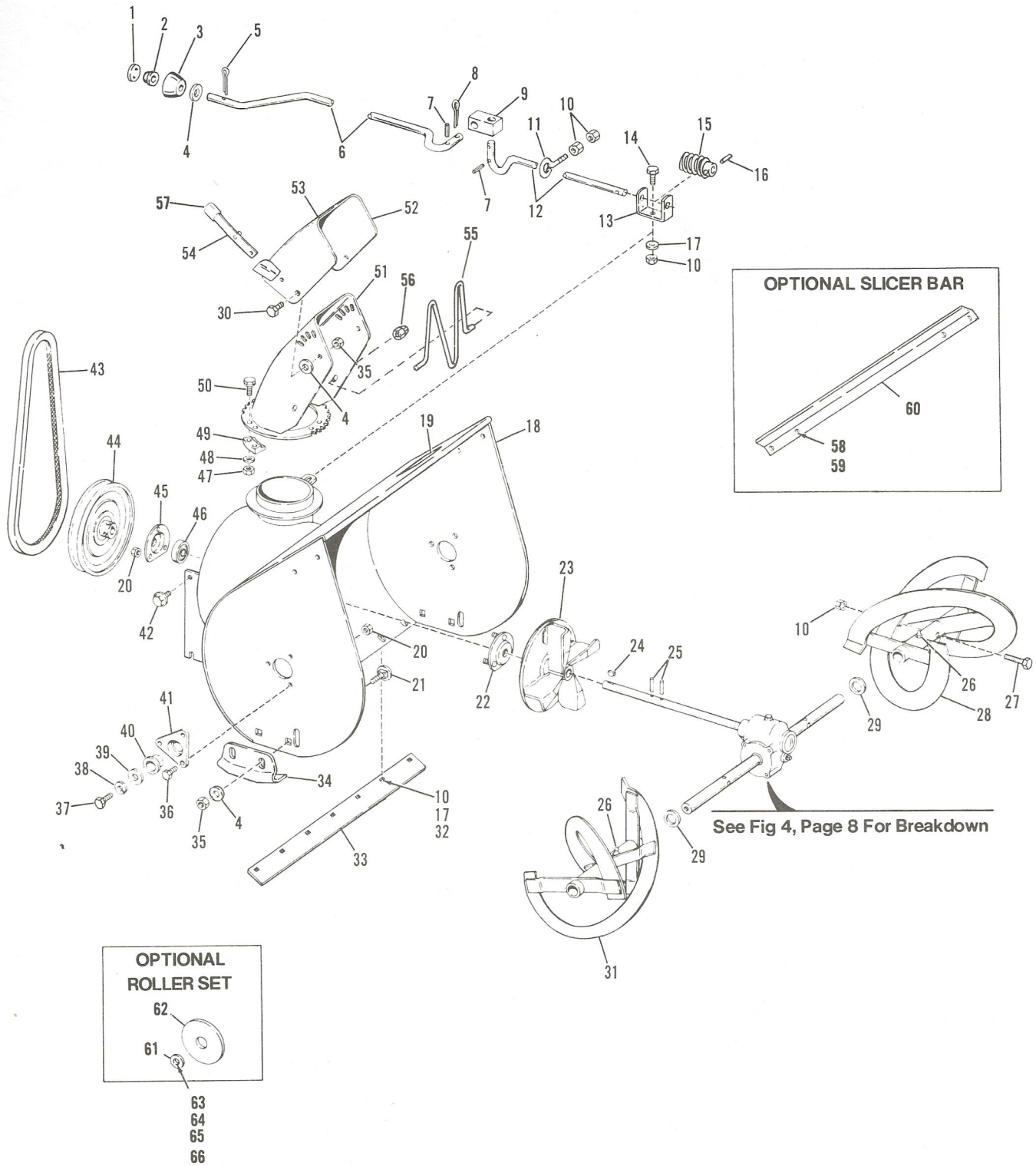


Figure 3 BLOWER HOUSING ASSEMBLY
6

REF. NO.	PART NO.	DESCRIPTION	NO. REQ'D.	REF. NO.	PART NO.	DESCRIPTION	NO. REQ'D.
1	1709135	Plug, Button.	1	35	● 1110108	Lock Nut, 3/8-16	6
2	1710146	Cap, Push On	1	36	● 1111599	Hex Head Capscrew, 1/4-20 x 5/8	6
3	1727032	Knob	1	37	● 1100053	Hex Head Capscrew, 1/2-13 x 3/4	2
4	● 1107383	Flat Washer, 3/8	7	38	● 1100245	Lockwasher, 1/2	2
5	● 1100346	Cotter Pin, 3/32 x 3/4	1	39	● 1100257	Flat Washer, 1/2	2
6	1727031	Chute Control Crank	1	40	1185846	Flange Bushing	2
7	1703066	Roll Pin, 1/8 x 3/4 (2)(3)(4).	3	41	1720922	Bearing Support	2
	1177625	Roll Pin, 1/8 x 3/4 (5)	4	42	● 1185798	Flange Whiz Lock Screw, 3/8-16 x 1/2	2
8	● 1100349	Cotter Pin, 1/8 x 3/4 (2) (3)(4)	1	43	1725253	V-Belt, 34"	1
9	1714782	Swivel Block.	1	44	1725282	Auger Sheave	1
10	● 1110107	Lock Nut, 5/16-18.	11	45	1720815	Flange Bearing (2)(3)(4)	1
11	1725199	Eye Bolt	1		1734735	Flange Bearing (5)	1
12	1730548	Chute Control Shaft.	1	46	1185809	Ball Bearing	1
13	1725271	Gear Support	1	47	● 1185985	Keys Nut, No. 10-24	6
14	● 1100044	Hex Head Capscrew, 5/16-18 x 3/4	1	48	● 1103959	Flat Washer, No. 10.	As Req'd.
15	1724870	Worm, 6 Thread, L.H.	1	49	1724869	Clip	3
16	1724885	Drive Pin, 3/32 x 3/4	1	50	● 1185130	Hex Head Sems Machine Screw, No. 10-24.	6
17	● 1107383	Flat Washer, 5/16	6	51	1724867	Duct Assembly	1
18	1724995	Housing.	1	52	1723746	Deflector Cap.	1
19	1730997	Decal (Warning)	1	53	1730996	Decal (Caution).	1
20	● 1110106	Lock, Nut, 1/4-20	9	54	1723643	Adjusting Lever.	1
21	● 1186128	Carriage Bolt, 3/8-16 x 1 (2)(3)(4)	4	55	1722501	Guard, Chute (5).	1
	1186126	Carriage Bolt, 3/8-16 x 3/4 (5)	4	56	1186048	Push Nut (5).	2
22	1720816	Bearing Flange (2)(3)(4)	1	57	1730214	Grip (5).	1
	1734872	Bearing Flange (5)	1	NI	1723284	Grease Gun	
23	1720785	Fan.	1	NI	1723479	Grease, Multi-purpose	
24	1104436	Woodruff Key, 3/16 x 3/4.	1			OPTIONAL SLICER BAR	
25	1185348	Roll Pin, 1/4 x 1-1/4	2	58	● 1110107	Lock Nut, 5/16-18.	2
26	1185803	Grease Fitting.	4	59	● 1106874	Capscrew, 5/16-18 x 3/4.	2
27	1720867	Shear Bolt	4	60	1715427	Drift Slicer.	1
28	1725116	Auger, Left Hand	1			OPTIONAL ROLLER SET	
29	1185816	Special Washer, 1-1/64 Diameter	6	61	1708754	Spacer.	2
30	● 1103212	Hex Head Capscrew, 3/8-16 x 5/8.	2	62	1716972	Roller	2
31	1725117	Auger, Right Hand.	1	63	● 1100243	Lockwasher, 3/8	2
32	● 1712059	Carriage Bolt, 5/16-18 x 1/2	5	64	● 1100256	Flat Washer, 3/8	6
33	1721716	Scraper Blade	1	65	● 1103840	Hex Nut, 3/8-16	2
34	1724868	Shoe (2)(3)	2	66	● 1106919	Capscrew, 3/8-16 x 1	2
	1728567	Runner (4).	2				

● Common Hardware - purchase locally (Grade 5 where applicable)

- (2) Serial Numbers 0200101 thru 0299999
- (3) Serial Numbers 0300101 thru 0399999
- (4) Serial Numbers 0400101 thru 0499999
- (5) Serial Numbers 0500101 and up

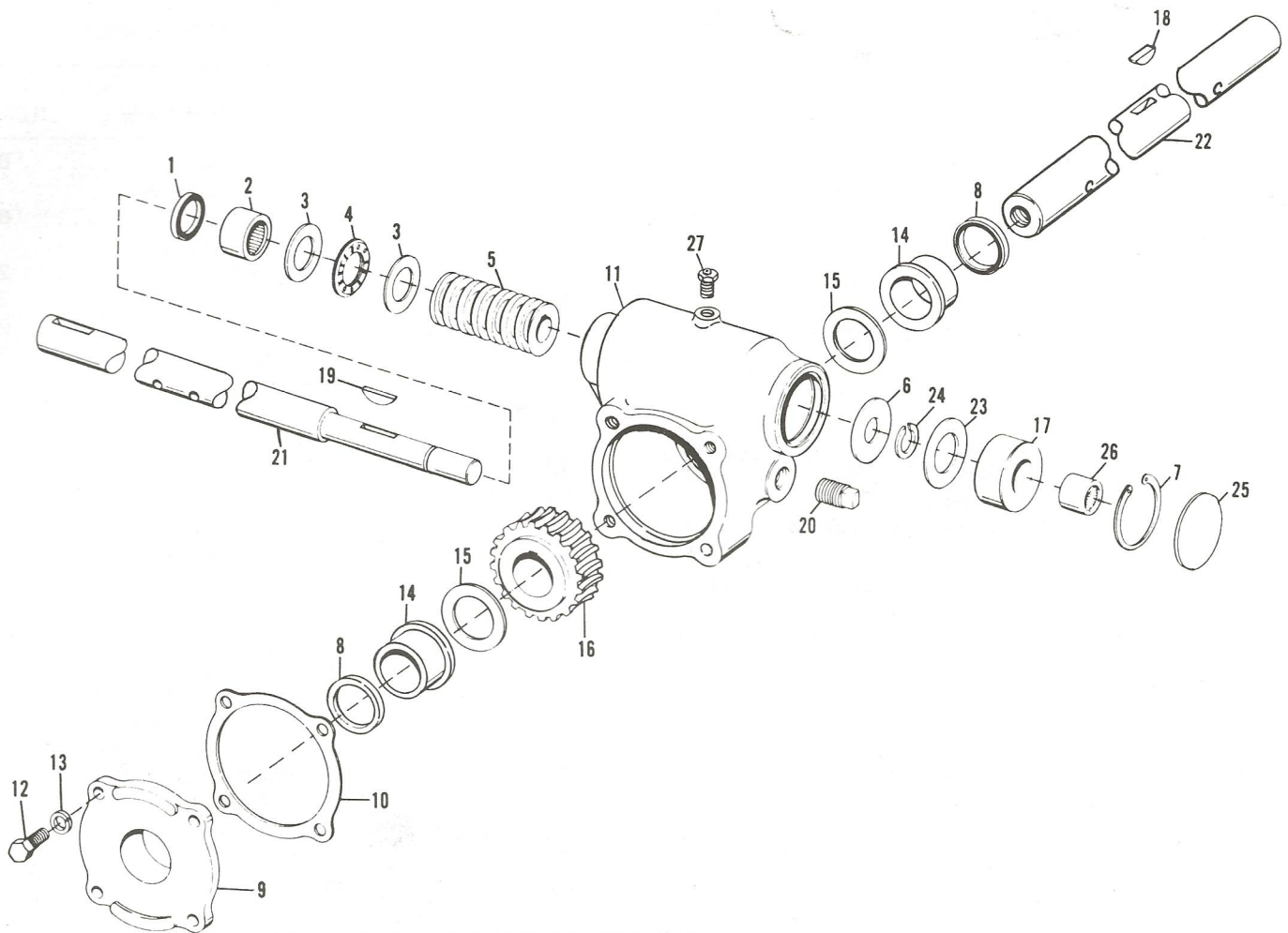


Figure 4 GEAR CASE ASSEMBLY

REF. NO.	PART NO.	DESCRIPTION	NO. REQ'D.	REF. NO.	PART NO.	DESCRIPTION	NO. REQ'D.
1	1185224	Oil Seal	1	17	1720763	Spacer	1
2	1185374	Needle Bearing	1	18	1100276	Woodruff Key, 1/4 x 7/8 . .	1
3	1185841	Thrust Race	2	19	1100283	Woodruff Key, 1/4 x 3/4 . .	1
4	1185431	Thrust Bearing	1	20	1105620	Square Head Plug, 1/4-18 NPT	1
5	1720932	Worm 2 Thd. L.H.	1	21	1728507	Impeller Shaft (2)(3)(4) . .	1
6	1185842	Washer	1		1725134	Impeller Shaft (5)	1
7	1118726	Retaining Ring, Internal . .	1	22	1728558	Auger Shaft (2)(3)(4)	1
8	1185266	Oil Seal	2		1721715	Auger Shaft (5)	1
9	1720910	Gear Case Cover	1	23	1185840	Thrust Race	1
10	1720941	Cover Gasket	1	24	1185843	Retaining Ring, External. . .	1
11	1721752	Gear Case Only	1	25	1112634	Expansion Plug	1
12	• 1111599	Capscrew, 1/4-20 x 5/8. . . .	4	26	1185568	Needle Bearing	1
13	• 1100241	Lockwasher, 1/4	4	27	1721442	Pressure Relief Valve	1
14	1185728	Flange Bearing	2	NI	1723456	Gear Lube, EP 90	
15	1185815	Thrust Race	2				
16	1720933	Worm Gear, 20T	1				

• Common Hardware - purchase locally (Grade 5 where applicable)

(2) Serial Numbers 0200101 thru 0299999
 (3) Serial Numbers 0300101 thru 0399999
 (4) Serial Numbers 0400101 thru 0499999
 (5) Serial Numbers 0500101 and up