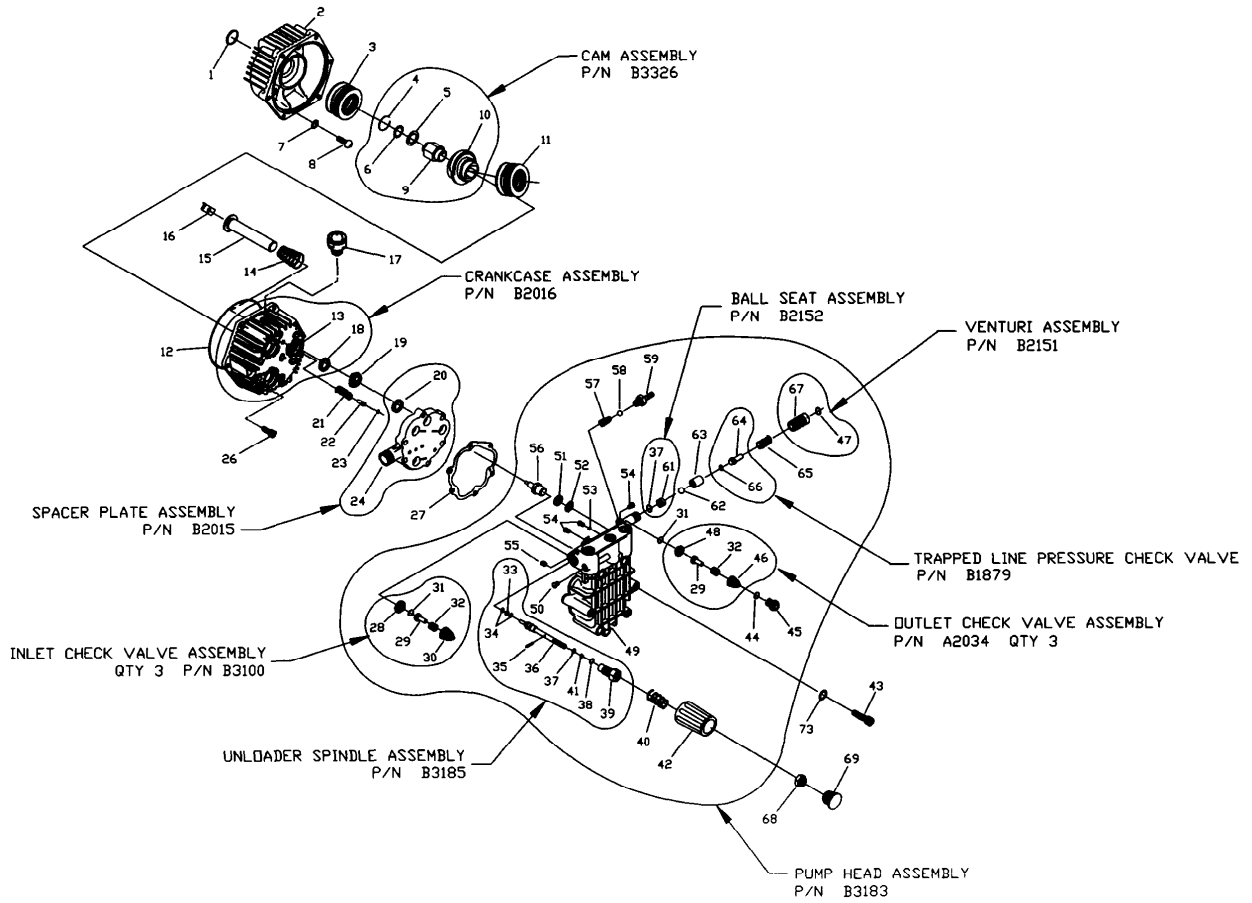


Ref #	Part Number	Qty	Description
1	A1040D	1	HOSE, 4-1/2' Chemical Clear
2	A1041	1	FILTER, Chemical Hose
3	70453	1	TAG, Warning Oil
4	97178	2	KNOB, Handle 1/4-20PW
5	31669	2	BOLT, 1/4-20 x 1-3/4 Carriage
6	21424	1	CONNECTOR, Garden Hose
7	99583	8	NUT, Flange Lock 5/16-28
8	B1982	1	BUMPER
9	97054	1	TAG, Pres. Adjust
10	B1288	1	TAG, PW Breather Cap
11	B2718	1	CLAMP, Hose 7/16" Dia.
13	32713	1	SCREW, Taptite #10-32 x 5/8" Lg
12	97566	1	TAG, Nozzle
14	45771	8	NUT, M8-1.25 Hex
15	22129	8	LOCKWASHER, M8
16	21217	4	MOUNT, Rubber Shock
17	B1236F		NOZZLE, Replacement 1.25 mm
18	97100	1	CAP, H.P. Adaptor
19	97098	1	CAP, Garden Hose Inlet
20	B2043	7	BOLT, 5/16-18 x 1-3/4" Carriage
21	-----	1	ASSEMBLY, Pump
21	198347GS	1	REPLACEMENT PUMP ASSEMBLY
22	B1827	1	ENGINE
23	B1983	1	HANDLE
24	B1631A	1	BILLBOARD, Plastic
25	B1932	1	DECAL, Instructions
26	B1981	2	SUPPORT, Handle
27	B2192	1	DECAL, Generac
28	B1760	2	ASSEMBLY, 10" Tire & Wheel
29	75402	2	PUSHNUT, .50 Dia.
30	AB1770	1	BASE
31	52858	2	NUT, M8 1.25 Locking
32	42909	2	HHCS, M8 1.25 x 30
33	50190	2	WASHER, M8 Flat
34	27007	2	MOUNT, Donut Type Vibration
35	20566	1	DECAL, Generac #1-800
36	B2150	1	HOOK, Gun
37	B2146	1	DECAL, Logo
41	B3057	1	KIT, O-Ring
42	B1969	1	HOSE, High Pressure
43	87815	1	GOGGLES, Safety
44	B1867F	1	WAND
45	B1861	1	GUN, High Pressure
46	B2203	1	KIT, Handle Fastening
47	B2163	1	KIT, Cleaning
48	B1460	2	CAP, Vinyl (black)
49	B2168	1	HANGER, Hose, Gun, Jug
50	B2516	1	CAP, Vinyl (black)
51	B3236	1	MANUAL



Ref #	Part Number	Qty	Description
1	B2218	1	O-RING, 1.625" x 0.103
2	B2260	1	ADAPTER, Engine
3	96542	1	BEARING, Eng. Adptr. Roller Thrust 4 x 4
4	97675	1	C - RING, Cam Retainer
5	97570	1	WASHER, Thrust
6	95524	1	WASHER, Retainer
7	B2217	4	O-RING, 0.239 ID x 0.070
8	B2261B	4	SCREW, Button Hd 5/16 - 24 x 3/4" Lg
9	95435	1	ADAPTER, Engine Shaft 3/4"
10	21277V	1	CAM, Axial 7.5 Lift
11	97606	1	BEARING, Axial Cam Roller Thrust 5.5 x 4
12	93790	1	"O" RING, Crankcase 113.97 x 119.21 x 2.62
13	97568A	1	CRANKCASE, Pump
14	96400	3	SPRING, Piston Return
15	99427	3	ASSEMBLY, Ceramic Piston & Cap
16	94944	3	SHOE, Piston Pivot
17	99735	1	ASSEMBLY, Breather
18	93680	3	SEAL, Oil Piston
19	93668	3	SPACER, Pilot
20	93667	3	SEAL, U - Cup ELF
21	93652	1	SPRING, Thermal Relief Actuator
22	95416	1	PISTON, Thermal Relief Actuator
23	93876	1	"O" RING, Thermal Relief 2.9 x 6.5 x 1.78
24	A1320	1	SPACER, Inlet Plate
26	40945	6	SCREW, SHC M6 x 1.0 x 20 mm Lg
27	A2069	1	GASKET, Head
28	A2062	3	SEAT, Check Valve Inlet
29	A2060	6	POPPET, Check Valve
30	97931	3	CAGE, Check Valve Inlet
31	B2640	6	"O" RING, Chk Valve 12.4 x 15.96 x 1.78
32	97929	6	SPRING, Check Valve Outlet
33	97843	1	"O" RING, 9.25 x 12.81 x 1.78
34	A2017	2	PAR-BACK, Backup Ring
35	A1719	1	PIN, 2.0 Dia. Spindle
36	B3184	1	SPINDLE, Pressure Regulator
37	93656	2	"O" RING, Spindle 6 x 10 x 1.78
38	A3829	1	"O" RING, Retainer Nut 14 x 17.56 x 1.78
39	A1712	1	NUT, Retainer - Spindle
40	A1716	1	SPRING, Unloader
41	A2016	1	PAR-BACK, Backup Ring
42	B3117	1	HANDLE, Unloader
43	A2013	6	BOLT, Head M8 x 1.25 x 70mm Lg
44	97840	3	"O" RING, Chk Valve Cap 15.6 x 19.16 x 1.78
45	97841	3	CAP, Outlet Port
46	20002	3	CAGE, Check Valve Outlet
47	A3805	1	"O" RING, Venturi 10.82 x 14.38 x 1.78
48	A2217	3	SEAT, Check Valve Outlet
49	A1318	1	CYLINDER, Head
50	B1758	1	PLUG, Button M8 x 1.25 x 8 mm
51	96053	3	SEAL, High Pressure
52	96015	3	RING, Bearing
53	A1717	1	MAGNET, Ball Deflector
54	B1757	4	PLUG, Button M6x1.0x8mm
55	A1718	1	SETSCREW, M8-1.25 x 8mm
56	93644	1	ACTUATOR, Thermal Relief
57	95380	1	SPRING, Chemical Injector
58	95379	1	BALL, 5.5 dia. Chemical Injector
59	A1575	1	BARB HOSE, Brass with Nylon Insert
61	A1713	1	SEAT, Ball Unloader
62	A2015	1	BALL, Stainless Steel 9/32 Dia.

Ref #	Part Number	Qty	Description
62	A2015	1	BALL, Stainless Steel 9/32 Dia.
63	A2503	1	SEAT, Trapped Line Pressure
64	A2756	1	VALVE, Shuttle Piston
65	89138	1	SPRING, Check Valve
66	21123	1	"O" RING, 3.68 x 7.24 x 1.78 cs
67	A1714	1	VENTURI, Chemical
68	A2014	1	SET SCREW, M6 - 1.0 x 8mm
69	B2241	1	CAP, Plastic
73	B2665	6	WASHER, Steel Spcl.
B3326	B3326		CAM ASSEMBLY
B2016	B2016		CRANKCASE ASSEMBLY
B2152	B2152		BALL SEAT ASSEMBLY
B2151	B2151		VENTURI ASSEMBLY
B1879	B1879		TRAPPED LINE PRESSURE CHECK VALVE
A2034	A2034	3	OUTLET CHECK VALVE ASSEMBLY
B3183	B3183		PUMP HEAD ASSEMBLY
B3185	B3185		UNLOADER SPINDLE ASSEMBLY
B3100	B3100	3	INLET CHECK VALVE ASSEMBLY
B2015	B2015		SPACER PLATE ASSEMBLY