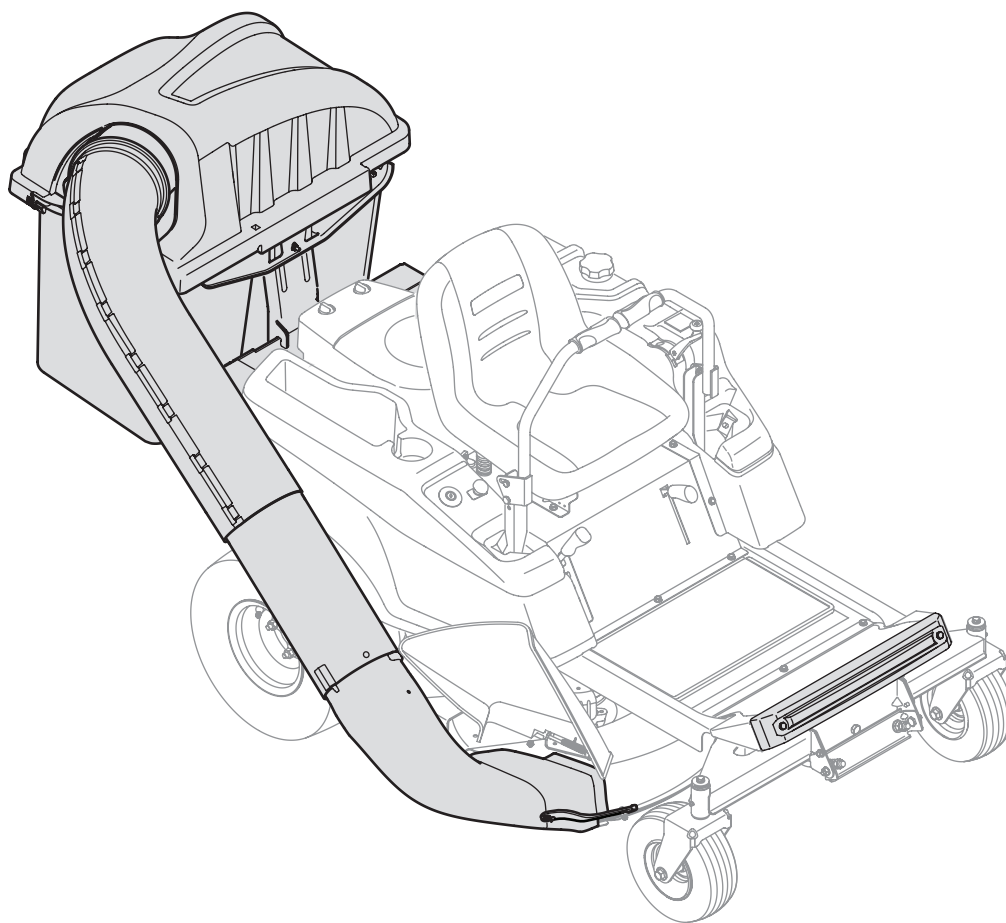

OPERATOR'S MANUAL



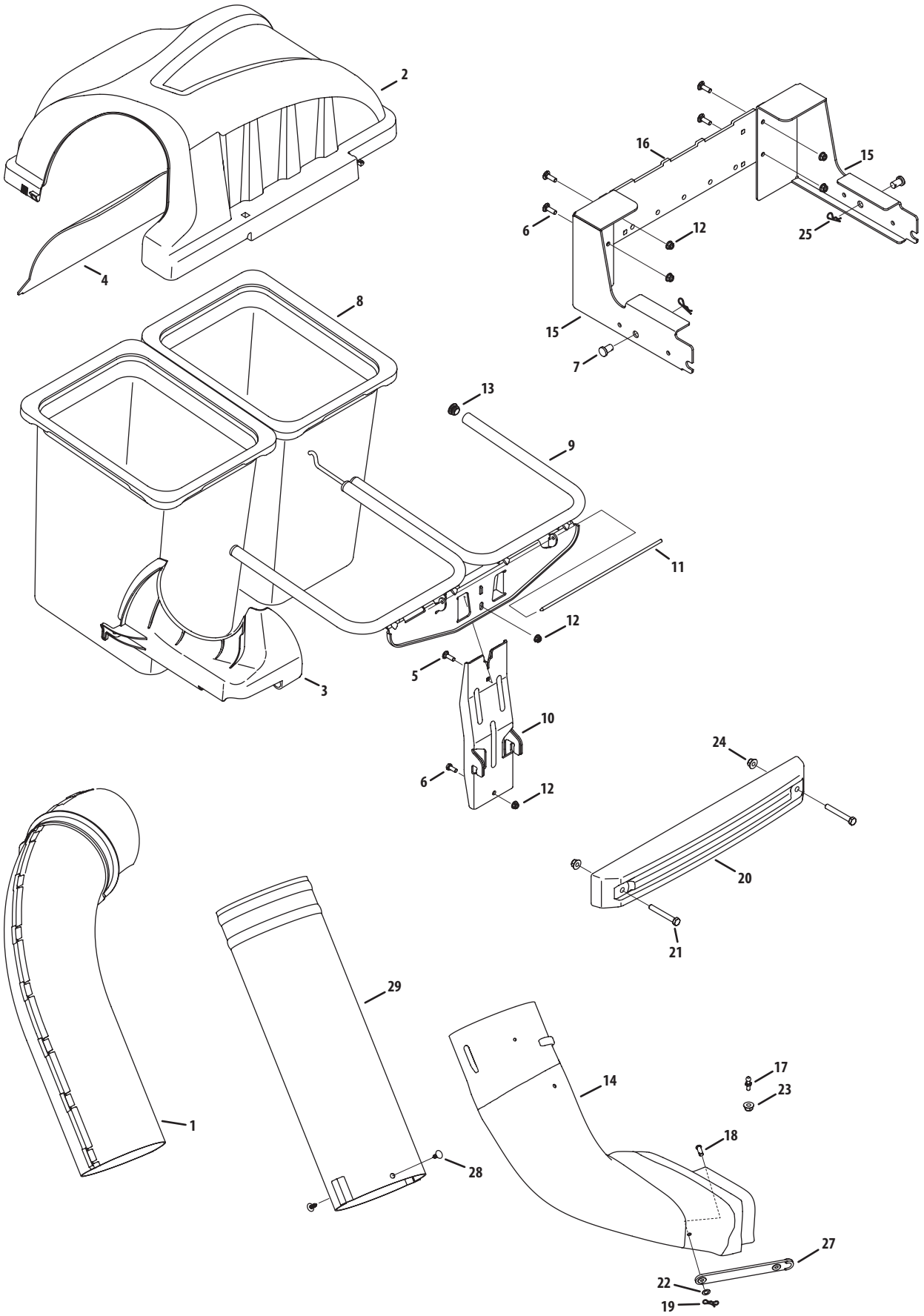
Twin Rear Bagger - Model No. 19A70005OEM

⚠ WARNING

**READ AND FOLLOW ALL SAFETY RULES AND INSTRUCTIONS IN THIS MANUAL
BEFORE ATTEMPTING TO OPERATE THIS MACHINE.
FAILURE TO COMPLY WITH THESE INSTRUCTIONS MAY RESULT IN PERSONAL INJURY.**

MTD LLC, P.O. BOX 361131 CLEVELAND, OHIO 44136-0019

19A700050EM Parts List



Ref.	Part Number	Description
1.	631-04295	Upper Chute Assembly
2.	631-04292	Twin Bagger Cover Assembly
3.	731-06497	Upper Chute Support
4.	731-06504	Bagger Cover Screen
5.	710-0276	Carriage Screw, 5/16-18 x 1.00"
6.	710-3008	Hex Head Screw, 5/16-18 x .75"
7.	711-0332	Clevis Pin, .50" Dia.
8.	664-04096	Grass-bag Assembly
9.	683-04481	Twin Bag Support Assembly
10.	683-04519	Vertical Support Bracket
11.	711-04988	Cover Hinge Pin
12.	712-04063	Flange Lock Nut, 5/16-18
13.	735-0246A	End Plug
14.	731-04777C	Discharge Chute Elbow
15.	689-00111	RZT Hitch Bracket Kit (RH & LH)
16.	783-06168	Universal Cross Bracket
17.	711-04069	Grass-catcher Pin
18.	711-05063	Clevis Pin 5/16 x 3/4
19.	714-04040	Bow-Tie Cotter Pin
20.	719-04271A	Bagger Weight
21.	710-3022	Hex Head Screw, 3/8 - 16 x 2.75
22.	736-0204	Flat Washer, .344 x .62 x .033
23.	712-04064	Flange Lock Nut, 1/4 - 20
24.	712-04065	Flange Lock Nut, 3/8 - 16
25.	714-04023	Cotter Pin, .080 x 1.5625 Internal
26.	719-04271A	RZT Bagger Weight
27.	723-04008A	Chute Strap
28.	726-3046	Ratchet Clip, .250
29.	731-06668	Bagger Chute Adapter, 7 In.