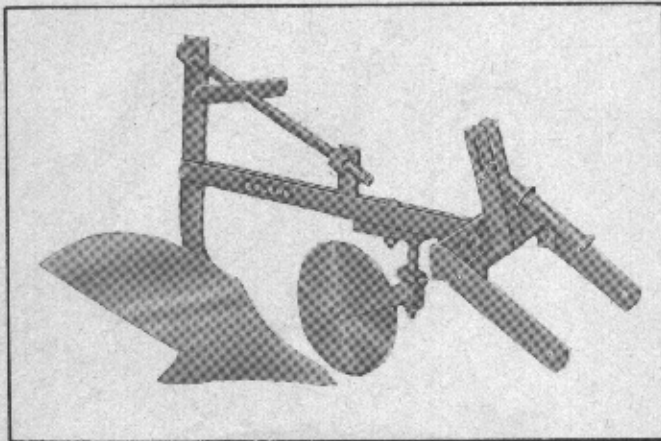


Owner Manual with Parts List

BOLENS

PLOW - 8"
Type 23219-01



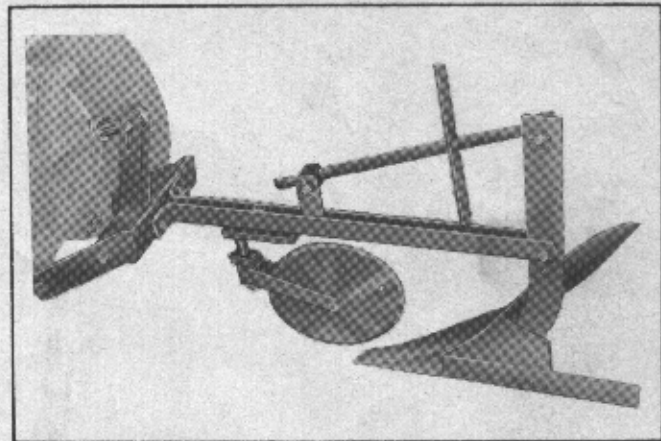
The plow is shipped in one carton, partially disassembled. Bolt the standard to the plow bottom assembly. Position the end of the split draw bar over center hole in standard, align the holes, and secure with capscrew and selflocking nut. Tighten firmly but allow sufficient looseness so that standard can pivot about this point for depth adjustment.

Insert the crank nut through the hole in upright bracket located on center of draw bar and the crank bearing through the hole in the top of the standard. Secure nut and bearing with cotter pins.

For initial assembly, bolt hitch with front ends downward to front end of draw bar using center holes of the two sets of three holes in the hitch cross bar. These holes are at two levels so the hitch will mount at an angle to the draw bar and be level after the first furrow is plowed and the right hand wheels are in the furrow of the proceeding pass.

Mount the coulter assembly below the draw bar with the mounting carriage bolt passing through the split draw bar directly in front of the upright bracket. Normal position is to have the coulter blade set $3/8$ to $1/2$ inch to the left of the plow landside and approximately 1 inch clearance between the bottom of the coulter blade and the tip of the plow share. Adjustment to the correct lateral position is made by turning the coulter standard. The coulter may have to be repositioned after a few furrows are plowed to maintain a clean furrow wall.

In general, when in moist or loose soil, the center of the coulter blade should be directly above or even slightly ahead of the plow point. In hard and dry soil, or when trash is present, it is advisable to position the coulter to the rear of the plow point. In loose soil it may be necessary to position the blade further to the left.



A coulter stop collar with pin is located on the coulter standard. This stop is to prevent the coulter from swinging around when the plow is out of the ground. With the blade in the proper position, to the left of the landside, the stop collar pin should be centered between the brackets of the coulter standard. Secure the collar with set screw.

Attach the plow to tractor by inserting lift bar of plow hitch into the hole in the tractor tool lift casting and securing with spring cotter. Align the holes in the ends of the plow hitch with the holes in the lower ends of the tool lift bracket and secure with pins and spring cotters.

The depth of plowing is regulated by the use of depth screw. The plow point can be lowered for deep plowing or raised for shallow plowing by turning the cross handle of the depth screw.

The series of holes in the cross member of plow hitch makes it possible to change the width of cut. In very hard soil it may be advisable to reduce the width of cut by moving the draw bar to the right. In light or sandy soil the width of the cut can be increased by moving the draw bar to the left.

NOTE: The varnish or rust preventative coating on the landside and moldboard must be removed before using the plow or scouring difficulties will be encountered. Keep the moldboard, landside, share, and coulter free from rust. Coat these parts with grease before storing. Lubricate the grease fitting on coulter spindle, crank nut, and crank bearing as necessary with regular gun grease.

The plow can be raised for operation and transport with the tractor tool lift lever.

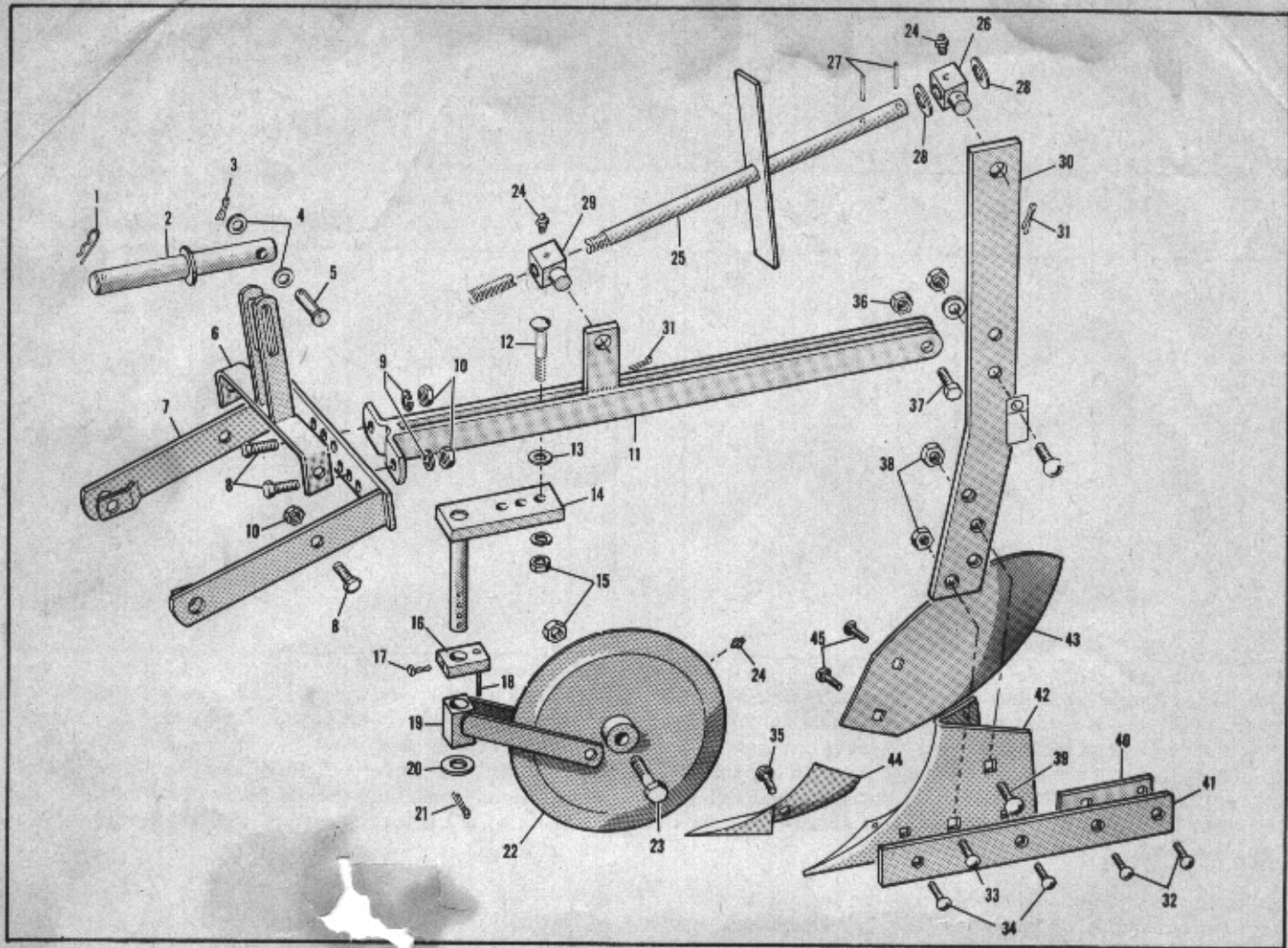


BOLENS PRODUCTS DIVISION

Food Machinery & Chemical Corporation

Port Washington

Wisconsin



Ref. No.	Part No.	Description	No. Reqd.
1	135035	Hairspring Cotter	1
2	170-9883	Lift Bar	1
3		Cotter Pin, 1/8 x 3/4	1
4		Washer, Flat, 1/2	2
5	170-6419	Clevis Pin	1
6	170-9890	Yoke	1
7	171-0013	Plow Hitch	1
8		Hex Capscrew, 1/2-13 x 1 1/2	4
9		Washer, Spring Lock, 1/2	3
10		Nut, Self Locking, 1/2-13	4
11	171-0010	Draw Bar	1
12		Carriage Bolt, 1/2-13 x 3	1
13		Washer, Flat, 1/2	1
14	170-3810	Standard	1
15		Hex Nut, 1/2-13	2
16	310857	Stop Collar	1
17	110-3532	Cup Point Set Screw, Sq. Hd. 7/16-14 x 3/4	1
18	170-3822	Pin	1
19	170-3809	Fork	1
20		Washer, Flat, 3/4	1
21		Pin, Spring Cotter, 3/16 x 1 1/4	1
22	990610	Coulter & Hub	1

Ref. No.	Part No.	Description	No. Reqd.
23	129627	Spindle	1
24	110-4954	Grease Fitting	3
25	171-0007	Depth Adjusting Screw	1
26	170-3798	Crank Bearing	1
27	118-5232	Drive Pin	2
28	309898	Washer	2
29	170-3799	Crank Nut	1
30	170-3808	Plow Standard	1
31		Pin, Spring Cotter, 1/8 x 1 1/4	2
32	111-3690	Plow Bolt, 3/8-16 x 1	4
33	111-3706	Plow Bolt, 1/2-13 x 1 1/4	1
34	111-3691	Plow Bolt, 3/8-16 x 1 1/4	2
35	111-0798	Plow Bolt, 7/16-14 x 1	1
36		Nut, Self Locking, 1/2-13	1
37		Hex Capscrew, 1/2-13 x 1 3/4	1
38		Hex Nut, 1/2-13	2
39		Carriage Bolt, 1/2-13 x 1 1/4	1
40	170-3818	Plow Heel	1
41	170-3815	Plow Landside	1
42	170-3816	Plow Frog	1
43	170-3817	Moldboard-8" Plow	1
44	170-3819	Point-8" Plow	1
45		Carriage bolt, 1/2-13 x 1 1/4	2