

ILLUSTRATED PARTS LIST

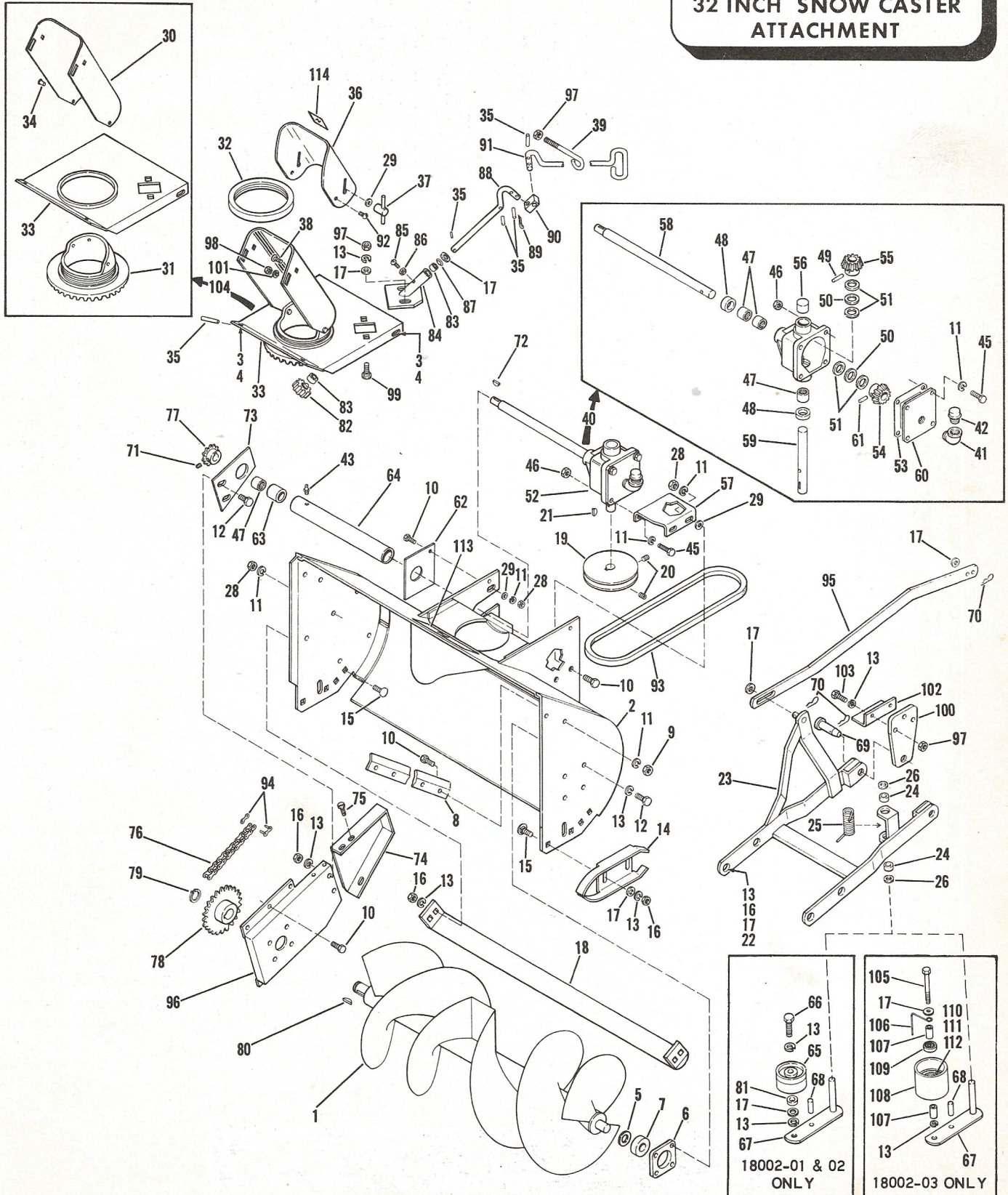
BOLENS

MODELS 18002-01

18002-02

18002-03

32 INCH SNOW CASTER
ATTACHMENT



18002-01 & 02
ONLY

18002-03
ONLY

32 INCH SNOW CASTER ATTACHMENT MODELS 18002-01-18002-02-18002-03

Ref. No.	Part No.	Description	No. Req'd
1	1719 751	Rotor	1
2	1719 754	Rotor Housing	1
3	1106 830	Capscrew 1/4-20 x 1/2	4
4	1100 241	Lock Washer 1/4	4
5	1701 447	Special Washer 3/4	AR
6	1715 126	Flange Bearing	2
7	1185 606	Ball Bearing	2
8	1715 427	Drift Slicer	2
9	1110 107	Lock Nut 5/16-18	4
10	1106 874	Capscrew 5/16-18 x 3/4	13
11	1100 242	Lock Washer 5/16	17
12	1106 913	Capscrew 3/8-16 x 5/8	10
13	1100 243	Lock Washer 3/8	35
14	1715 011	Shoe	2
15	1111 285	Carriage Bolt 3/8-16 x 1	8
16	1110 108	Lock Nut 3/8-16	14
17	1107 383	Flat Washer 3/8	15
18	1719 760	Scraper	1
19	1721 040	Sheave-Drive (18002-02+03 only)	1
	1719 976	Sheave-Drive (18002-01 only)	1
20	1103 466	Set Screw 5/16-18 x 3/8	2
21	1104 436	Woodruff Key 3/16 x 3/4	1
22	1106 919	Capscrew 3/8-16 x 1	6
23	1719 768	Hitch	1
24	1716 295	Bushing	2
25	1716 266	Torsion Spring	1
26	1107 385	Flat Washer 1/2	2
27	1100 356	Cotter Pin 3/32	1
28	1103 839	Hex Nut 5/16-18	9
29	1107 382	Flat Washer 5/16	5
30	1720 211	Outlet Duct	1
31	1719 136	Swivel Duct	1
32	1719 132	Seal Ring	1
33	1719 769	Gear Cover	1
34	1104 045	Button Rivet	4
35	1703 066	Roll Pin	6
36	1720 212	Deflector Cap	1
37	1714 373	Wing Nut	2
38	1185 518	Carriage Bolt 1/4-20 x 5/16	2
39	1719 974	Eye Bolt	1
40	1720 636	Gear Case Assy	1
41	1105 029	Street Elbow 90° 3/8 NPT	1
42	1706 566	Vented Cap	1
43	1104 954	Grease Fitting	1
44	1106 878	Capscrew 5/16-18 x 1	2
45	1106 882	Capscrew 5/16-18 x 1-1/4	2
46	1110 107	Lock Nut 5/16-18	4
47	1185 010	Needle Bearing	4
48	1185 296	Seal	2
49	1185 218	Roll Pin 1/4 x 1-1/8	1
50	1185 431	Thrust Bearing	2
51	1185 432	Thrust Race	4
52	1719 001	Gear Case Only	1
53	1713 662	Gasket	1
54	1713 663	Gear - 23 Teeth	1
55	1713 664	Gear - 16 Teeth	1
56	1713 665	Bearing - Closed End	1
57	1719 772	Gear Case Support	1
58	1719 773	Drive Shaft	1

Ref. No.	Part No.	Description	No. Req'd
59	1719 774	Pulley Shaft	1
60	1719 776	Cover	1
61	1185 284	Roll Pin 1/4 x 2	1
62	1715 020	Support Bracket	1
63	1713 653	Plug Bearing	1
64	1719 775	Support Tube Inc Ref #63	1
65	1713 802	Idler Pulley (18002-01+02 only)	1
66	1107 249	Capscrew 3/8-24 x 1-3/4 (18002-01+02 only)	1
67	1719 778	Idler Arm	1
68	1185 218	Roll Pin 1/4 x 1-1/8	1
69	1713 501	Clevis Pin (Special)	2
70	1703 011	Cotter Spring	4
71	1182 554	Set Screw 5/16-18 x 3/16	2
72	1100 275	Woodruff Key 5/32 x 5/8	1
73	1719 784	Guard Bracket	1
74	1719 787	Chain Guard	1
75	1185 212	Self Tap Screw #10-24 x 3/8	3
76	1719 785	Drive Chain #40	1
77	1714 362	Sprocket - 11 Teeth	1
78	1714 361	Sprocket - 28 Teeth	1
79	1113 527	Retainer Ring	1
80	1200 033	Hi Pro Key 3/16 x 3/4	1
81	1716 896	Spacer (18002-01+02 only)	1
82	1714 367	Chute Control Pinion	1
83	1185 395	Bronze Bearing	2
84	1719 333	Chute Control	1
85	1102 571	Screw 1/4-20 x 3/4	1
86	1103 838	Hex Nut 1/4-20	1
87	1705 119	Bowed Washer	1
88	1717 017	Chute Pinion Shaft	1
89	1100 351	Cotter Pin 1/8 x 1-1/4	2
90	1714 782	Swivel Block	1
91	1719 973	Crank	1
92	1100 118	Mach Screw 1/4-20 x 1/2	2
93	1719 783	Belt 41"	1
94	1185 026	Connector Link	1
95	1719 788	Lift Link	1
96	1715 039	Chain Cover	1
97	1103 840	Hex Nut 3/8-16	9
98	1110 106	Lock Nut 1/4-20	2
99	1111 284	Carriage Bolt 3/8-16 x 3/4	2
100	1720 130	Hitch Plate	2
101	1107 381	Flat Washer 1/4	2
102	1721 257	Stop	1
103	1100 043	Capscrew 3/8-16 x 1-1/4 HT.	6
104	1719 972	Duct Assy (Inc Ref #30, 31, 33, 34)	1
105	1187 516	Capscrew 3/8-24 x 3-1/4 (18002-03 only)	1
106	1721 827	Belt Guide (18002-03 only)	1
107	1715 217	Spacer (18002-03 only)	2
108	1721 826	Idler Pulley (18002-03 only)	1
109	1185 265	Ball Bearing (18002-03 only)	1
110	1100 115	Screw #10-24 x 1/2 (18002-03)	3
111	1100 240	Lock Washer #10 (18002-03)	3
112	1103 959	Flat Washer #10 (18002-03)	3
113	1715 633	Decal (Bolens)	1
114	1715 670	Decal (Be Careful)	1



BOLENS

PORT WASHINGTON, WISCONSIN, U.S.A.

PRINTED IN U.S.A.

FORM NO. P-552034 8/69
REPLACES FORM P-551810 OF 11/67 & 6/68
ALSO P-551987 OF 9/68