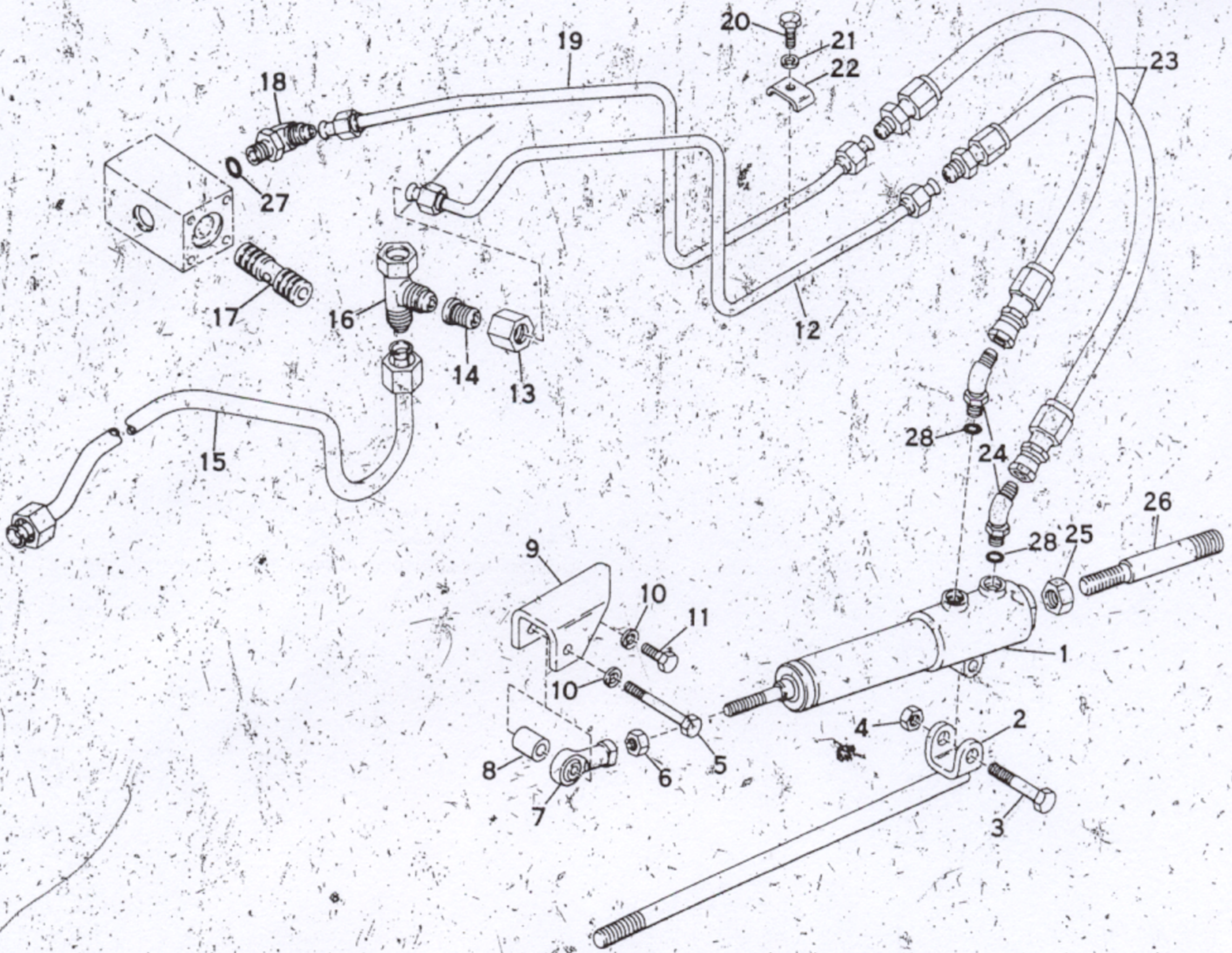


ILLUSTRATED PARTS LIST

BOLENS

POWER STEERING
KIT
MODEL 18030-01



| Ref. No. | Part No. | Description | No. Req'd. |
|----------|----------|------------------------|------------|
| 1 | 1722 776 | Valve & Cylinder Assy. | 1 |
| 1A | 1723 214 | Repair Kit for Item #1 | 1 |
| 2 | 1722 934 | Link Assembly | 1 |
| 3 | 1106 932 | Capscrew, 3/8-16x2 | 1 |
| 4 | 1110 108 | Grip Nut, 3/8 - 16 | 1 |
| 5 | 1106 936 | Capscrew, 3/8-16x2-1/2 | 1 |
| 6 | 1121 709 | Hex Nut, 3/8 - 24 | 1 |
| 7 | 1717 635 | Rod End | 1 |
| 8 | 1722 780 | Spacer | 1 |
| 9 | 1722 781 | Bracket Support | 1 |
| 10 | 1100 243 | Lockwasher, 3/8 | 2 |
| 11 | 1106 915 | Capscrew, 3/8-16x3/4 | 1 |
| 12 | 1722 879 | Tube Assembly | 1 |
| 13 | 1185 907 | Hex Nut, 3/4 - 16 | 1 |
| 14 | 1185 906 | Reducer | 1 |

| Ref. No. | Part No. | Description | No. Req'd. |
|----------|----------|---------------------------|------------|
| 15 | 1722 693 | Tube Assembly | 1 |
| 16 | 1185 908 | Tee-Swivel Nut, 3/4 - 16 | 1 |
| 17 | 1722 537 | Spool, Flow Divider | 1 |
| 18 | 1185 737 | Elbow, 90°(Inc. Ref. #27) | 1 |
| 19 | 1722 878 | Tube Assembly | 1 |
| 20 | 1106 834 | Capscrew, 1/4-20x3/4 | 1 |
| 21 | 1100 241 | Lockwasher, 1/4 | 1 |
| 22 | 1722 667 | Tubing Clamp | 1 |
| 23 | 1722 704 | Hose Assembly | 2 |
| 24 | 1718 459 | Elbow, 45°(Inc. Ref. #28) | 2 |
| 25 | 1110 152 | Grip Nut, 1/2 - 20 | 1 |
| 26 | 1722 777 | Stud, Adjusting | 1 |
| 27 | 1185 835 | O-Ring | 1 |
| 28 | 1185 833 | O-Ring | 2 |