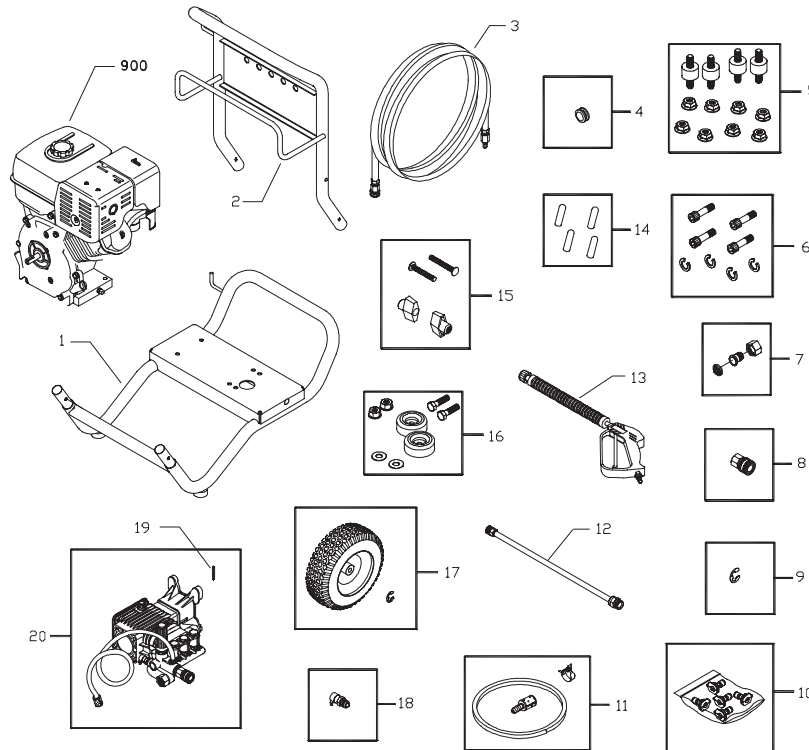


Exploded Views and Parts List

EXPLODED VIEW AND PARTS LIST — MAIN UNIT

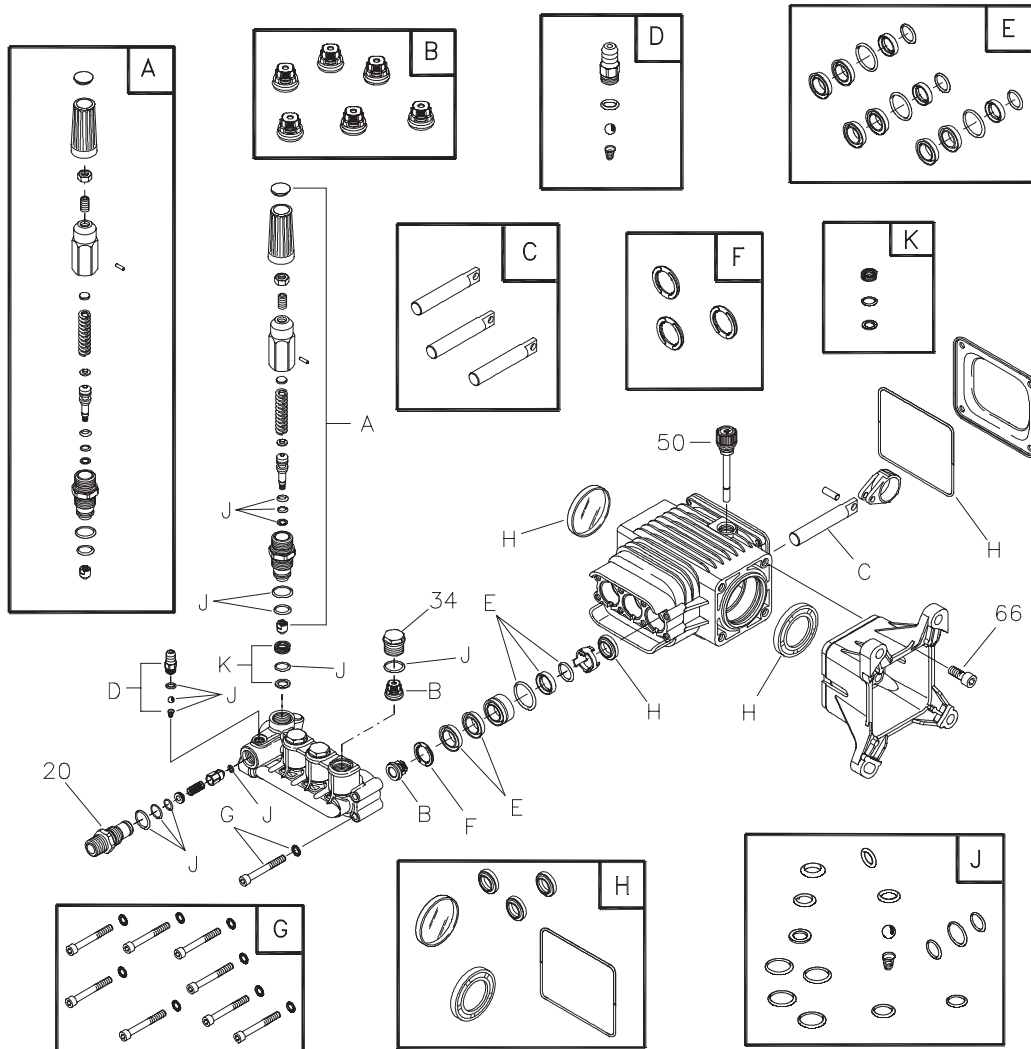


Item	Part #	Description	Item	Part #	Description
1	B194424GS	BASE	15	B2203GS	KIT, Handle Fastening
2	B196133GS	HANDLE	16	192310GS	KIT, Vibration Mount
3	B4805GS	HOSE	17	194411GS	KIT, Wheel
4	30809GS	GROMMET	18	194298GS	VALVE, Thermal
5	195294GS	KIT, Engine Mounting Hardware	19	63281GS	KEY
6	192132GS	KIT, Pump Mounting Hardware	20	199311GS	ASSY, Pump (see page 3)
7	199310GS	KIT, Garden Hose Inlet	900	§	ENGINE
8	95458GS	QUICK CONNECT	Items Not Illustrated:		
9	191265GS	E-RING	191267RGS	AXLE	
10	196233GS	KIT, Spray Tips	198666GS	MANUAL, Operator's	
	195983AGS	Nozzle, QC, Red	BB3061BGS	OIL BOTTLE	
	195983BGS	Nozzle, QC, Yellow	196990GS	KIT, Decals, Srv	
	195983CGS	Nozzle, QC, Green	Optional Accessories Not Illustrated		
	195983DGS	Nozzle, QC, White	100031	STABILIZER, Fuel	
	195851ZZGS	Nozzle, QC, Black	100516GS	KIT, O-Ring	
11	192796GS	KIT, Chemical Hose/Filter	100515GS	PUMP SAVER	
12	196315GS	ASSY, Extension, QC	§ - Contact Engine Manufacturer		
13	B1436BGS	GUN			
14	192126GS	VINYL CAP			

Copyright © 2005 Briggs & Stratton Power Products Group, LLC. All rights reserved. No part of this material may be reproduced or transmitted in any form by any means without the express written permission of Briggs & Stratton Power Products Group, LLC.

Exploded Views and Parts List

EXPLODED VIEW AND PARTS LIST — PUMP



Item	Part #	Description
20	198851GS	INJTR, Detergent 3/8NPT
34	198850GS	PLUG
50	198849GS	CAP, Oil Dipstick
66	198297GS	SCREW, M8 x 20
A	198736GS	KIT, UNLOADER
B	198843GS	KIT, VALVES
C	198844GS	KIT, PISTON
D	192914GS	KIT, HOSE TAIL
E	198845GS	KIT, WATER SEALS
F	198848GS	KIT, SUPPORT RING
G	198852GS	KIT, PUMP HEAD HARDWARE
H	198846GS	KIT, OIL SEALS

Item	Part #	Description
J	198847GS	KIT, O-RINGS
K	198158GS	KIT, SEAT
Items Not Illustrated:		
	B2384GS	FILTER, Inlet
	194298GS	VALVE, Thermal Relief
Optional Accessories Not Illustrated		
	6033	BOTTLE, Oil, Pump
	100515GS	PUMP SAVER
	186452GS	FILTER, Inlet Bag of 10

NOTE: Item letters A - K are service kits and include all parts shown within the box.